



# UNITY BROKERS LTD.

"PROGRESSIVE TOWER" (5TH FLOOR), 1837, SK. MUJIB ROAD, AGRABAD C/A, CHITTAGONG-4100  
 PHONE : 031-2520692, 710954, Fax : 880-31-710954, E-mail : muradofbdesh@gmail.com, unity.brokers@gmail.com

## Tea Market Report

### MARKET REPORT ON SALE NO.37 HELD ON JANUARY 16, 2023

Offerings comprising of 55,275 packages leaf met with good demand. Prices followed quality. Withdrawals stood at 40% against 40% last week.

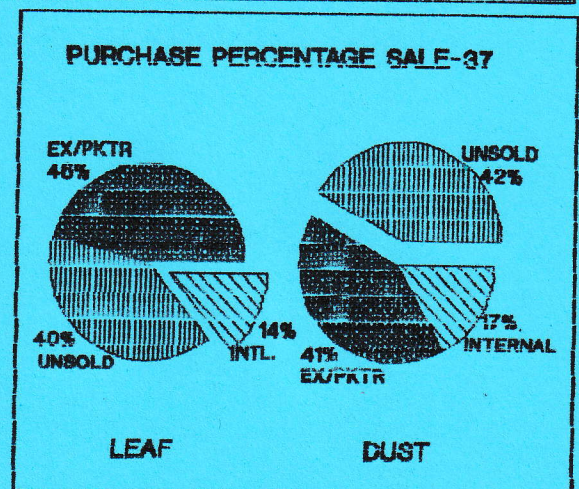
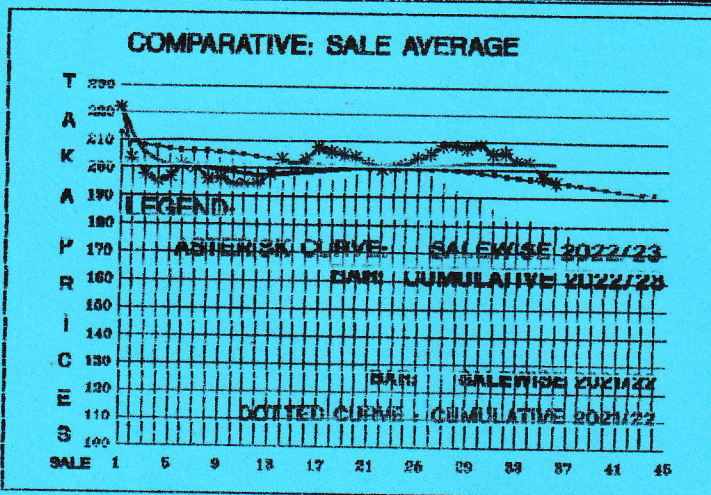
**LEAF:** Well made and good liquoring brokens were firm to often dearer. Mediums met irregular rates and occasionally sold over last rates. Plainer types types were easier and met withdrawals. Poor varieties ranged between Tk.95/- to Tk.119/-. Selective best types sold at around Tk.257/- to Tk.356/-.

Few best lines of fannings were firm to mostly dearer. Medium and plainer types were irregularly dearer to mostly easier. Poor types met withdrawals and where sold, fetched Tk.108/- to Tk.119/-. Selective best lines sold between Tk.257/- to Tk.288/-.

**DUST:** 12,736 packages of dust on offer met good demand. Cleaner well made dust and CD's were fully firm to often dearer. Others were an irregular market and the poor types met with substantial withdrawals which stood at 42% against 28% last week.

**SUPPLEMENTS:** There were 1,293 packages of leaf and dust supplements. 76% remained unsold with only 24% sold.

B R O K E N S		Q U O T A T I O N S		F A N N I N G S	
BEST	: 236.00 - 255.00	BEST	: 237.00 - 256.00	BEST	: 237.00 - 256.00
GOOD	: 222.00 - 235.00	GOOD	: 218.00 - 236.00	GOOD	: 218.00 - 236.00
MEDIUM	: 172.00 - 221.00	MEDIUM	: 175.00 - 217.00	MEDIUM	: 175.00 - 217.00
PLAIN	: 120.00 - 170.00	PLAIN	: 120.00 - 173.00	PLAIN	: 120.00 - 173.00
Northern:	110.00 - 160.00	Northern:	126.00 - 181.00	Northern:	126.00 - 181.00



**SALE NO:-** 38 will be held on January 23, 2023 at 8:30 A.M. in Chattogram. Total offerings will comprise of 49,762 packages leaf and 12,275 packages dust.

**COMMENTS:** There was strong competition from the packeteers with internal buyers coming in for a share for all well made and good liquoring teas. There was a slightly improved off-take for cheaper varieties with the entry of some export buying. Withdrawals were mostly confined to the plain, poor end season varieties.