

NATIONAL BROKERS LIMITED

<http://nationalbrokersbd.com/>

Tea Auctioneers since 1948

TEA MARKET REPORT – Sale 35 held on Monday 2nd January, 2023

CTC LEAF: 61,310 packages of Current Season teas on offer commenced on a fairly strong note but demand slackened with the progress of sale.

BROKENS: A small weight of good Brokens on offer initially met with a fairly strong demand and prices moved upwards but demand slackened somewhat as the sale progressed often declining by Tk.5/- and Tk.8/- with some withdrawals. Mediums followed a similar trend whilst plain varieties met with less interest and prices eased further with heavier withdrawals. BLFs met with fair demand at steady rates but there were several withdrawals.

FANNINGS: A few best Fannings on offer initially met with a strong demand but substantially lost in value with the progress of sale and there were fair withdrawals in this category. Mediums likewise, followed a similar trend. Plain teas met with some interest but were generally much easier than last with more withdrawals. BLFs met with fair demand at steady rates but there were several withdrawals.

CTC DUST: 12,358 packages of Current Season teas on offer met with fair demand. Good liquoring Dusts attracted good demand around last levels. CDs were in fair demand and sold Tk. 8/- to Tk.10/- below last levels. Mediums also met with fair demand with some withdrawals. Plain and BLF Dusts saw only some demand with fair withdrawals. Blenders were fairly active with some interest from the Loose tea buyers.

COMMENTS: There was a larger weight of tea on offer and also a heavier weight of plain teas catalogued this week. As aforesaid, demand was fairly strong particularly for good teas at the beginning but declined towards the close with quite a lot of withdrawals. Blenders were fairly active with some interest from the Loose tea buyers. Dusts sold well.

Our catalogue: (Sale 35) Avg: Tk 221.17, Sold 66.5 % & (Sale 34) Avg: Tk 216.36, sold 75.4 %.

Quotations – This Week – (In Taka)

Brokens	This Week	Last Week	Fannings	This week	Last Week	Dust	This week	Last Week
Large	215-225	215-225	Best	225-245	230-240	PD	195-277	200-277
Medium	210-220	210-222	Good	215-220	215-225	RD	107-279	125-331
Small	212-225	215-225	Medium	200-210	205-212	D	130-293	141-330
Plain	170-185	170-190	Plain	175-185	180-190	CD	162-301	153-330
BLF	130-150	125-145	BLF	130-150	125-145	BLF	145-205	130-178

Exchange Rates 26th December, 2023 Sterling Pound: Tk. 12256130 dollar: Tk. 102.0000

Top Prices – This Week

Category – CTC	Garden	Grade	Package	Price	Buyer(s)
Brokens	* Deanston	FBOP	10	270/-	Meghna
Fannings	Sonarupa	PF	10	276/-	Ispahani
Clonal Brokens	Kaiyacherra	GBOP(C)	24	325/-	Nishita/AKT
Clonal Fannings	Kedarpur	PF(BT1)	10	287/-	Ispahani
PD/RD (Incl Clone)	Sonarupa	RD	10	286/-	Meghna
D (Incl Clone)	* Daragaon	D	20	293/-	Meghna/AKT
CD (Incl Clone)	* Madhupur	CD(BT1)	10	301/-	Ankur

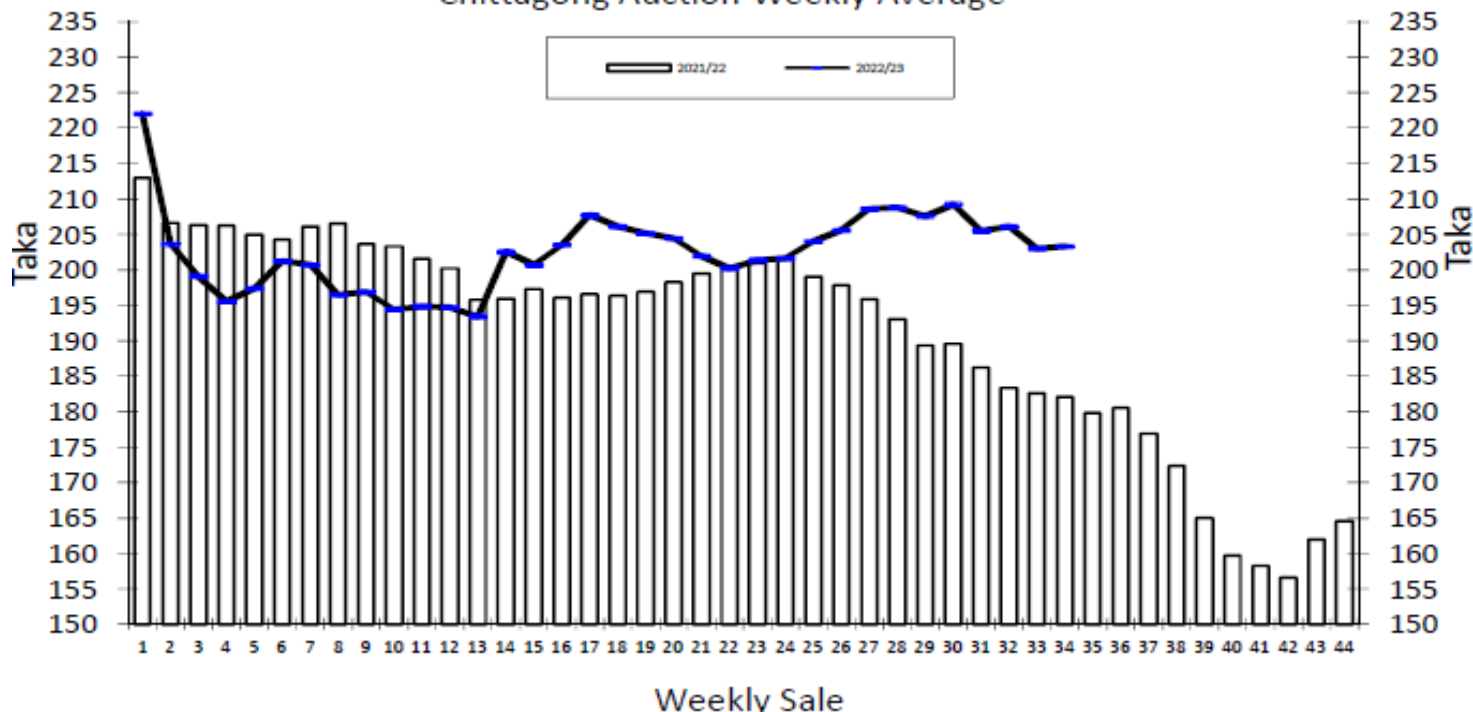
* Above price(s) realised in our catalogue

Offerings

	This Sale (Sale 35)				Next Sale (Sale 36)			
	Season 2022-23		Season 2021-22		Season 2022-23		Season 2021-22	
Type	Packages	Qty/Kg	Packages	Qty/Kg	Packages	Qty/Kg	Packages	Qty/Kg
Leaf	61,310	3,059,369	47,021	2,577,691	52,848	2,637,115	53,968	2,958,526
Dust	12,358	616,664	10,345	559,655	12,026	600,097	10,447	564,331
Total	73,668	3,676,033	57,366	3,137,347	64,874	3,237,213	64,415	3,522,856

Chittagong Auction Average: Sale 34
Season 2022/23: Tk. 203.01 & Season 2021/22: Tk. 182.59

Chittagong Auction Weekly Average



Category	For the Sale				Up-to-Date Sale							
	Season 2021/22		Season 2022/23		Season 2021/22		Season 2022/23		(+/-) Season 2021/22			
	Qty. (Kg)	Taka	Qty. (Kg)	Taka	Qty. (Kg)	(%)	Taka	Qty. (Kg)	(%)	Taka	Qty. (Kg)	Taka
CTC LEAF	1,830,252.5	174.30	1,761,493.5	197.10	56,739,858.4	78.4%	193.23	53,864,666.9	79.0%	196.94	-2,875,191.5	3.71
CTC DUST	476,730.7	211.87	465,299.8	226.90	15,361,410.7	21.2%	211.42	14,282,825.2	20.9%	222.68	-1,078,585.5	11.26
Sub-Total	2,306,983.2	182.06	2,226,793.3	203.32	72,101,269.1	99.6%	197.10	68,147,492.1	99.9%	202.33	-3,953,777.0	5.23
Orthodox	0.0	0.00	0.0	0.00	26,105.0	0.0%	104.44	0.0	0.0%	0.00	-26,105.0	-104.44
Total	2,306,983.2	182.06	2,226,793.3	203.32	72,127,374.1	99.6%	197.07	68,147,492.1	99.9%	202.33	-3,979,881.9	5.26
Green Tea	7.0	1,350.00	7,521.5	594.68	10,741.4	0.0%	495.12	21,955.0	0.0%	567.52	11,213.6	72.41
Oolong Tea	0.0	0.00	3.0	1,950.00	0.0	0.0%	0.00	24.5	0.0%	1,884.69	24.5	1,884.69
Yellow Tea	0.0	0.00	1.5	1,950.00	20.0	0.0%	1,400.00	4.0	0.0%	2,356.25	-16.0	956.25
Total	2,306,990.2	182.07	2,234,319.3	204.64	72,138,135.5	99.6%	197.11	68,169,475.6	99.9%	202.45	-3,968,659.9	5.34
Other (s)	0.0	0.00	0.0	0.00	253,843.2	0.4%	162.94	43,126.3	0.1%	129.18	-210,716.9	-33.76
G.Total	2,306,990.2	182.07	2,234,319.3	204.64	72,391,978.7	100.0%	196.99	68,212,601.9	100%	202.40	-4,179,376.8	5.41

Buyer Purchase Analysis

Buyer	For the Sale				Up-to-Date Sale							
	Season 2021/22		Season 2022/23		Season 2021/22		Season 2022/23		(+/-) Season 2021/22			
	Qty. (Kg)	Taka	Qty. (Kg)	Taka	Qty. (Kg)	(%)	Taka	Qty. (Kg)	(%)	Taka	Qty. (Kg)	Taka
Export	0.0	0.00	0.0	0.00	24,143.6	0.03%	199.24	18,727.3	0.03%	218.44	-5,416.3	19.20
Internal	2,306,990.2	182.07	2,234,319.3	204.64	72,367,835.1	99.97%	196.99	68,193,874.6	99.97%	202.40	-4,173,960.5	5.41
Grand Total	2,306,990.2	182.07	2,234,319.3	204.64	72,391,978.7	100.00%	196.99	68,212,601.9	100.0%	202.40	-4,179,376.8	5.41

Crop of Major Tea Producing & Exporting Countries

Country	Month	2020	2021	2022	(+/-) 2021	2020	2021	2022	(+/-) 2021
Bangladesh *	November	10.50	10.24	10.84	0.60	79.43	89.57	86.05	-3.52
Sri Lanka	November	24.8	20.2	20.2	0.0	250.2	279.1	231.9	-47.2
North India	November	127.6	104.1	111.6	7.5	981.9	1057.1	1062.4	5.3
South India	November	21.4	16.7	21.2	4.5	201.6	220.0	215.6	-4.4
All India	November	149.0	120.8	132.8	12.0	1183.5	1277.1	1278.0	0.9
Kenya	August	38.5	33.6	35.9	2.3	376.8	342.4	340.1	-2.3

* Source: Bangladesh Tea Board's Monthly Statistical Bulletin

OTHER MARKETS

KOLKATA SALE 52- 27TH /28TH & 29TH DECEMBER, 2022

CTC: There was fair demand for better Assams. Select cleaner, well-made & good liquoring varieties were irregular around last whilst the remainder was easier. There was good demand for the medium category Assams which sold irregular rates around last. Good and medium Dooars were barely steady whilst plainer & BLF sorts were easier. There was some export activity on larger Brokens. Local buyers operated on the Dooars.

Tea Category USC/KG	Brokens	Fannings	Dusts
BEST ASSAMS	327-387	315-363	327-375
GOOD ASSAMS	254-291	242-278	242-291
MED ASSAMS	182-218	182-206	182-218
BEST DOOARS	266-291	266-291	
GOOD DOOARS	218-254	218-254	
MED/PLN DOOARS	145-194	145-206	

SILIGURI SALE 52- 28TH DECEMBER, 2022

LEAF: Fair general demand. Barring few liquoring sorts which were around last, the remainder eased irregularly & faced some withdrawals. DUST: Good demand at irregular levels. Buying Pattern: Internal- Main stay. Blenders – Operated.

CTC/Quotations (USC/KG)	Brokens(USC/kg)	Fannings(USC/kg)	Dust (USC/kg)
GOOD / BEST	242-363	248-363	230-297
MEDIUM / BETTER MEDIUM	176-236	176-242	169-224
COMMON / BLF	127-169	133-169	139-163

COONOOR SALE 52- HELD ON 31ST DECEMBER, 2022

Fag end of the year sale met with good demand at around last sold levels. The total CTC leaf teas sold this week was 90.18 % (793677.01kgs) of the total offering of 880132.23Kgs.

CTC Leaf(USC/KG)	Best	Good	Better Medium	Medium	Plain
Larger Brokens	157-183	138-148	133-137	123-132	117-122
Medium Brokens	169-309	146-165	139-145	131-138	121-130
Smaller Brokens	183-241	148-171	143-146	133-142	125-133
Fannings	183-258	149-169	142-148	133-140	117-132