

NATIONAL BROKERS LIMITED

<http://nationalbrokersbd.com/>

Tea Auctioneers since 1948

TEA MARKET REPORT – Sale 43 held on Monday 27th February, 2023

CTC LEAF: 28,745 packages of Current Season & 20 packages of New Season teas on offer met with a fair demand at irregularly easier rates.

BROKENS/FANNINGS: There was a nominal weight of clean teas on offer which attracted strong interest and were generally fully firm to occasionally dearer. Lesser varieties met with a selective demand at much easier rates, although the plainest types elicited fair interest at around last levels. BLF teas saw fair interest and were about steady but there were fair withdrawals.

CTC DUST: 7,188 packages of Current Season & 6 packages of New Season teas on offer met with a fairly good demand. Good liquoring Dusts sold well at

around last levels. Mediums met with a fair demand easing by Tk.15/- to Tk.20/- over last with fair withdrawals. Plain and BLF Dusts were mostly firm on last. Blenders lent good support with fair interest from the Loose tea buyers.

COMMENTS: Fibrous end of season varieties comprised the bulk of the offerings which met with irregular demand. Blenders operated for clean varieties on offer whilst Loose tea buyers were more active at the lower end of the market. Consequently, lower priced teas met with less withdrawals at about steady rates. Dusts sold well.

Our catalogue: (Sale 43) Avg: Tk 164.21, Sold 67.7 % & (Sale 42) Avg: Tk 156.84, sold 65.2%.

Quotations – This Week – (In Taka)

Brokens	This Week	Last Week	Fannings	This week	Last Week	Dust	This week	Last Week
Large	NQTA	NQTA	Best	210-240	225-245 nom	PD	94-240	125-219
Medium	150-170	170-190	Good	170-190	185-200	RD	100-261	102-265
Small	155-185	175-200	Medium	125-145	140-170	D	125-273	132-298
Plain	80-110	80-120	Plain	80-110	85-120	CD	122-304	131-294
BLF	120-155	115-150	BLF	120-155	115-150	BLF	132-138	115-172

Exchange Rates 27th February, 2023 Sterling Pound: Tk. 123.0541 dollar: Tk. 103.0000

Top Prices – This Week

Category – CTC	Garden	Grade	Package	Price	Buyer(s)
Brokens	Ghazipore	BOP	20	270/-	GT/Jamal
Fannings	* Balisera	PF	30	264/-	City
Clonal Brokens	Ruthna	BOP	20	258/-	LC/Al-amin
Clonal Fannings	Kaiyacherra Dalu	OF	20	252/-	BC/Jamuna
PD/RD (Incl Clone)	* Deanston	RD	10	261/-	Ispahani
D (Incl Clone)	* Madhupur	D	11	273/-	Uttara
CD (Incl Clone)	* Madhupur	CD(BT1)	6	304/-	Pabna

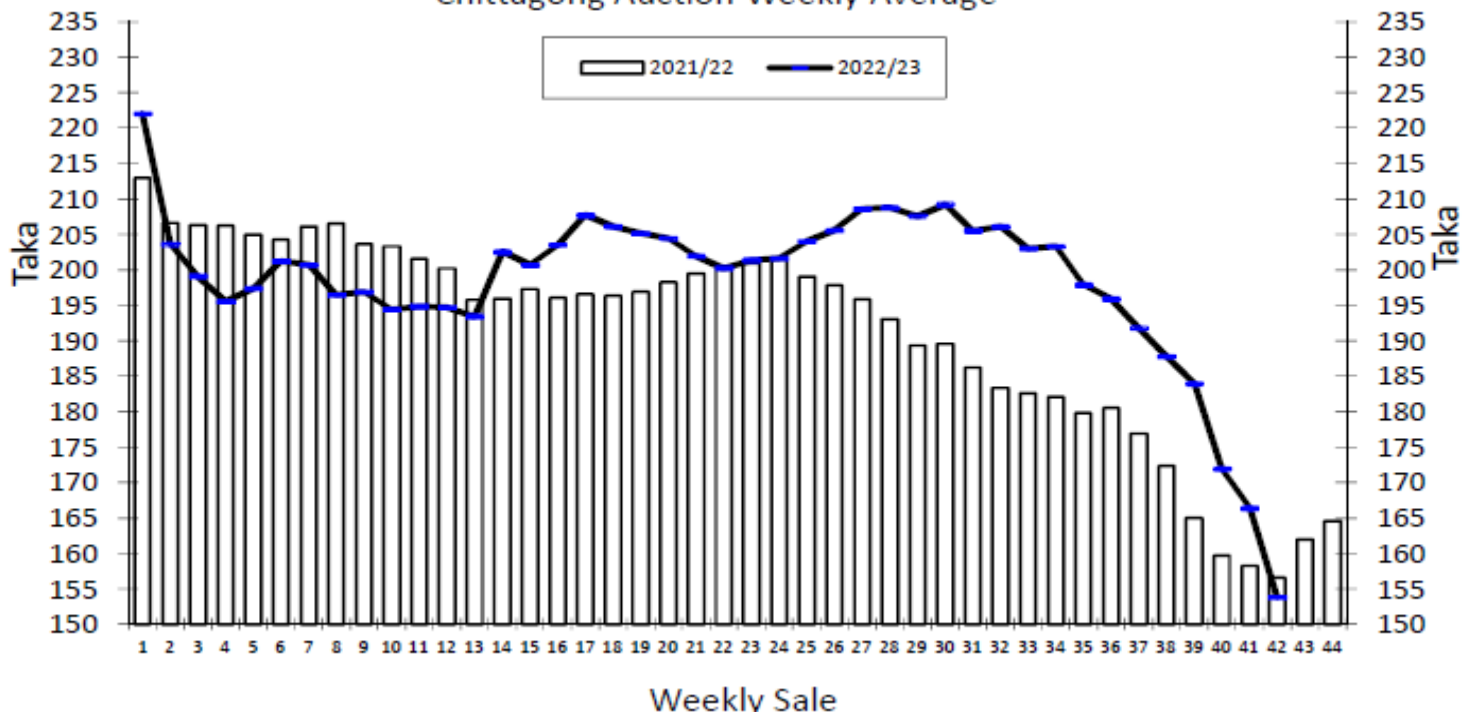
* Above price(s) realised in our catalogue

Offerings

Type	This Sale (Sale 43)				Next Sale (Sale 44)			
	Season 2022-23		Season 2021-22		Season 2022-23		Season 2021-22	
	Packages	Qty/Kg	Packages	Qty/Kg	Packages	Qty/Kg	Packages	Qty/Kg
Leaf	28,765	1,435,374	11,078	607,296	20,979	1,046,852	6,192	339,445
Dust	7,194	358,981	3,511	190,576	4,469	223,003	2,046	111,091
Total	35,959	1,794,354	14,589	797,872	25,448	1,269,855	8,238	450,536

Chittagong Auction Average: Sale 42
Season 2022/23: Tk. 153.81 & Season 2021/22: Tk. 156.66

Chittagong Auction Weekly Average



Category	For the Sale				Up-to-Date Sale							
	Season 2021/22		Season 2022/23		Season 2021/22		Season 2022/23		Season 2021/22		(+/-) Season 2021/22	
	Qty. (Kg)	Taka	Qty. (Kg)	Taka	Qty. (Kg)	(%)	Taka	Qty. (Kg)	(%)	Taka	Qty. (Kg)	Taka
CTC LEAF	1,333,881.5	152.97	1,363,317.5	148.05	69,066,118.1	78.7%	187.76	66,197,097.9	79.0%	193.34	-2,869,020.2	5.57
CTC DUST	336,726.2	171.28	350,905.9	176.19	18,432,278.9	21.0%	208.63	17,526,285.8	20.9%	218.94	-905,993.1	10.31
Sub-Total	1,670,607.7	156.66	1,714,223.4	153.81	87,498,397.0	99.7%	192.16	83,723,383.7	99.9%	198.70	-3,775,013.3	6.54
Orthodox	0.0	0.00	0.0	0.00	26,227.0	0.0%	104.83	0.0	0.0%	0.00	-26,227.0	-104.83
Total	1,670,607.7	156.66	1,714,223.4	153.81	87,524,624.0	99.7%	192.13	83,723,383.7	99.9%	198.70	-3,801,240.3	6.56
Green Tea	0.0	0.00	19.5	274.36	10,980.4	0.0%	511.01	36,356.0	0.0%	560.63	25,375.6	49.62
Oolong Tea	0.0	0.00	5.0	1,250.00	0.0	0.0%	0.00	49.0	0.0%	1,636.73	49.0	1,636.73
Yellow Tea	0.0	0.00	5.0	1,300.00	20.0	0.0%	1,400.00	28.0	0.0%	1,552.68	8.0	152.68
Total	1,670,607.7	156.66	1,714,252.9	153.82	87,535,624.4	99.7%	192.17	83,759,816.7	99.9%	198.85	-3,775,807.7	6.68
Other (s)	0.0	0.00	524.0	87.85	255,339.4	0.3%	163.65	44,299.0	0.1%	128.85	-211,040.4	-34.80
G.Total	1,670,607.7	156.66	1,714,776.9	153.80	87,790,963.8	100.0%	192.09	83,804,115.7	100%	198.82	-3,986,848.1	6.73

Buyer Purchase Analysis

Buyer	For the Sale				Up-to-Date Sale							
	Season 2021/22		Season 2022/23		Season 2021/22		Season 2022/23		Season 2021/22		(+/-) Season 2021/22	
	Qty. (Kg)	Taka	Qty. (Kg)	Taka	Qty. (Kg)	(%)	Taka	Qty. (Kg)	(%)	Taka	Qty. (Kg)	Taka
Export	5,768.2	202.81	0.0	0.00	29,911.8	0.03%	199.93	90,188.8	0.11%	134.10	60,277.0	-65.83
Internal	1,664,839.5	156.50	1,714,776.9	153.80	87,761,052.0	99.97%	192.09	83,713,926.9	99.89%	198.89	-4,047,125.1	6.80
Grand Total	1,670,607.7	156.66	1,714,776.9	153.80	87,790,963.8	100.00%	192.09	83,804,115.7	100.0%	198.82	-3,986,848.1	6.73

Crop of Major Tea Producing & Exporting Countries

Country	Month	2020	2021	2022	(+/-) 2021	2020	2021	2022	(+/-) 2021
Bangladesh *	December	6.96	6.93	7.78	0.85	86.39	96.51	93.83	-2.68
Sri Lanka	December	28.5	20.5	19.5	-1.0	278.4	299.5	251.5	-48.0
North India	December	53.6	50.8	48.0	-2.8	1035.5	1108.0	1110.4	2.4
South India	December	20.5	15.0	14.4	-0.6	222.0	235.0	230.1	-4.9
All India	December	74.1	65.8	62.4	-3.4	1257.5	1343.0	1340.5	-2.5
Kenya	November	46.6	50.7	49.2	-1.5	515.1	485.3	478.0	-7.3

* Source: Bangladesh Tea Board's Monthly Statistical Bulletin

OTHER MARKETS

COONOOR SALE 08- 24th FEBRUARY, 2023

DEMAND: - Good demand at erratic price levels. **MARKET:** - The total CTC leaf teas sold this week was **75.94%** (634030.12kgs) of the total offering of **834926.39Kgs**. The best liquoring teas continued to sell at irregularly dearer price levels with select few invoices fetching handsome gains. Good and better medium category larger Broken sold irregularly easier. Medium, smaller Broken & Fanning grades settled at steady to easier levels with some Fanning grades remaining unsold. Medium & Plainer category teas eased by a couple of rupees with larger weight of bolder & medium broken remaining unsold. **BUYING PATTERN:** - The major Blenders were fairly active and bought around **52.98%** of the total CTC sold. Upcountry packeteers & the other regional buyers were selective on the range of teas however, internal and select upcountry packeteers competed strongly for the best category select invoices. Exporters were choosy on the range of teas on offer.

CTC Leaf(USC/KG)	Best	Good	Better Medium	Medium	Plain
Larger Brokens	195-248	140-159	131-136	125-130	110-124
Medium Brokens	169-347	146-160	141-145	130-140	122-129
Smaller Brokens	160-282	147-152	142-146	134-141	128-133
Fannings	165-352	147-160	142-146	136-141	125-135

MOMBASA SLE 08- 20TH /21ST & 22ND FEBRUARY, 2023

Good and improved demand for the 242,022 packages (16,269,167.00 kilos) on offer with 32.91% remaining unsold.

CTC QUOTATIONS	BP1 – USC	PF1 – USC	PD – USC	D1 – USC
Best	255 – 376	264 – 344	270 – 304	270 – 294
Good	255 – 295	262 – 294	270 – 287	270 – 271
Good Medium	255 – 280	262 – 294	270 – 277	270 – 272
Medium (KTDA)	250 – 268	244 – 280	258 – 270	245 – 262
Medium (Plantations)	160 – 232	150 – 248	180 – 269	155 – 242
Lower Medium	115 – 228	120 – 212	150 – 264	111 – 220
Plainer	105 – 148	095 – 163	102 – 201	102 – 164

KOLKATA/SILIGURI SALE 08

Sales dropped this week.