

NATIONAL BROKERS LIMITED

<http://nationalbrokersbd.com/>

Tea Auctioneers since 1948

TEA MARKET REPORT – Sale 26 held on Monday 31st October, 2022

CTC LEAF: 58,400 packages of Current Season teas on offer met with a fairly good demand.

BROKENS: There was only a small weight of clean well made Brokens which were well competed for and were mostly firm to slightly dearer. Medium and Plain types saw a little less demand particularly the latter with several withdrawals. BLF teas met with less demand and were easier and suffered heavier withdrawals.

FANNINGS: There was only a small weight of clean Fannings which saw stronger demand. Other varieties saw a decline in price following quality. There were several withdrawals in this category. BLF teas met with less demand and were easier and suffered heavier withdrawals.

CTC DUST: 13,016 packages of Current Season teas on offer met with a good demand. Good liquoring

Dusts sold well at around last levels. Their Mediums met with fair demand easing by Tk.3/- to Tk.5/- over last closely following quality. Plain and BLF Dusts met with a selective market at around last levels with more withdrawals. Blenders lent strong support with fair interest from the Loose tea buyers.

COMMENTS: A few good liquoring teas on offer were well supported by the Blenders as well as the Loose tea buyers who operated in slightly more strength. All others were less in demand and prices were easier for these types with more withdrawals.

Good liquoring Dusts continued to meet with more competition.

Our catalogue: (Sale 26) Avg: Tk 218.85, Sold 71.6% & (Sale 25) Avg: Tk 214.49, sold 72.2%.

Quotations – This Week – (In Taka)

Brokens	This Week	Last Week	Fannings	This week	Last Week	Dust	This week	Last Week
Large	205-210 nom	205-210 nom	Best	235-245 nom	225-235 nom	PD	181-318	201-275
Medium	205-215	207-215	Good	215-225	218-223	RD	185-394	130-410
Small	210-220	210-217	Medium	205-210	207-212	D	190-390	185-398
Plain	175-185	175-185	Plain	175-185	175-185	CD	192-310	168-380
BLF	125-155	130-150	BLF	125-155	130-150	BLF	165-209	180-200

Exchange Rates 31st October, 2022 Sterling Pound: Tk. 115.4698 dollar: Tk. 99.5000

Top Prices – This Week

Category – CTC	Garden	Grade	Package	Price	Buyer(s)
Brokens	* Brindabon	GBOP	20	320/-	GT/Rajdhani
Fannings	Amtali	DMPF(S)	10	313/-	BC
Clonal Brokens	* Madhupur	GBOP(BT1)	20	419/-	Meghna/AKT
Clonal Fannings	Kedarpur	PF(BT1)	10	396/-	Meghna
PD/RD (Incl Clone)	* Madhupur	RD(BT1)	10	394/-	Meghna
D (Incl Clone)	* Madhupur	D(BT1)	20	390/-	AKT
CD (Incl Clone)	* Amrail	CD	30	310/-	Shawon/TS

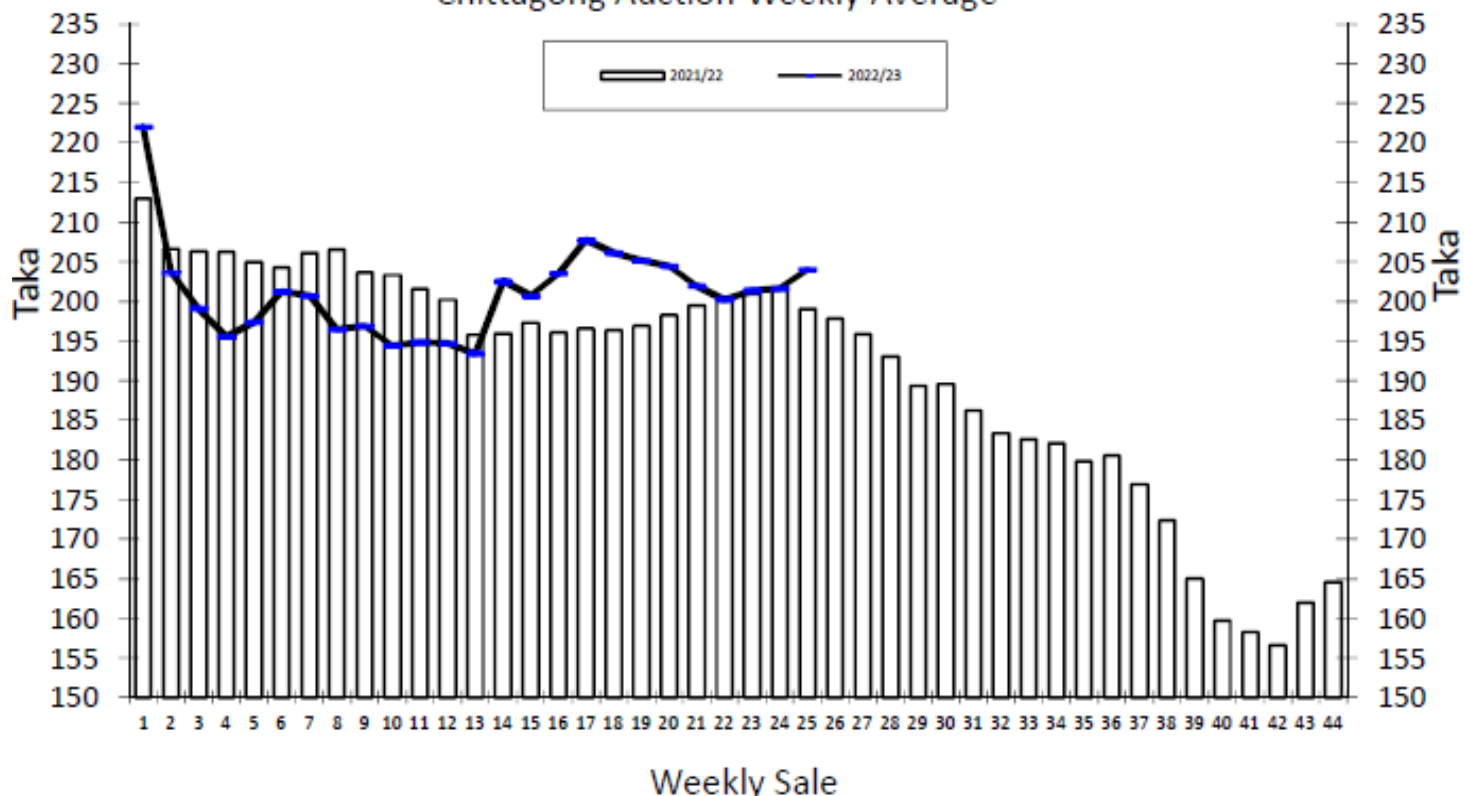
* Above price(s) realised in our catalogue

Offerings

Type	This Sale (Sale 26)				Next Sale (Sale 27)			
	Season 2022-23		Season 2021-22		Season 2022-23		Season 2021-22	
	Packages	Qty/Kg	Packages	Qty/Kg	Packages	Qty/Kg	Packages	Qty/Kg
Leaf	58,400	2,914,160	52,049	2,853,326	57,337	2,861,116	51,822	2,840,882
Dust	13,016	649,498	11,235	607,676	12,629	630,187	11,299	611,205
Total	71,416	3,563,658	63,284	3,461,002	69,966	3,491,303	63,121	3,452,087

Chittagong Auction Average: Sale 25
Season 2022/23: Tk. 204.07 & Season 2021/22: Tk. 199.10

Chittagong Auction Weekly Average



Quantities of Teas Sold & Average Prices Realised

Category	For the Sale				Up-to-Date Sale							
	Season 2021/22		Season 2022/23		Season 2021/22		Season 2022/23		(+/-) Season 2021/22			
	Qty. (Kg)	Taka	Qty. (Kg)	Taka	Qty. (Kg)	(%)	Taka	Qty. (Kg)	(%)	Taka	Qty. (Kg)	Taka
CTC LEAF	2,039,883.5	196.24	1,731,648.1	199.81	40,078,705.7	77.9%	197.08	37,060,656.8	78.7%	194.90	-3,018,048.9	-2.18
CTC DUST	478,618.5	211.28	417,459.7	221.74	11,070,174.5	21.5%	212.71	9,976,414.7	21.2%	221.18	-1,093,759.8	8.48
Sub-Total	2,518,502.0	199.10	2,149,107.8	204.07	51,148,880.2	99.4%	200.46	47,037,071.5	99.9%	200.48	-4,111,808.7	0.01
Orthodox	0.0	0.00	0.0	0.00	26,035.0	0.1%	101.48	0.0	0.0%	0.00	-26,035.0	-101.48
Total	2,518,502.0	199.10	2,149,107.8	204.07	51,174,915.2	99.5%	200.41	47,037,071.5	99.9%	200.23	-4,137,843.7	-0.18
Green Tea	18.0	1,100.00	28.0	1,523.93	10,322.4	0.0%	456.70	2,436.5	0.0%	439.46	-7,885.9	-17.24
Yellow Tea	0.0	0.00	0.0	0.00	20.0	0.0%	1,400.00	0.0	0.0%	0.00	-20.0	-1,400.00
Total	2,518,520.0	199.10	2,149,135.8	204.09	51,185,257.6	99.5%	200.46	47,039,508.0	99.9%	200.49	-4,145,749.6	0.02
Other (s)	0.0	0.00	2,178.4	127.26	249,798.6	0.5%	163.91	29,190.9	0.1%	120.77	-220,607.7	-43.14
G.Total	2,518,520.0	199.10	2,151,314.2	204.01	51,435,056.2	100.0%	200.29	47,068,698.9	100%	200.44	-4,366,357.3	0.15

Buyer Purchase Analysis

Buyer	For the Sale				Up-to-Date Sale							
	Season 2021/22		Season 2022/23		Season 2021/22		Season 2022/23		(+/-) Season 2021/22			
	Qty. (Kg)	Taka	Qty. (Kg)	Taka	Qty. (Kg)	(%)	Taka	Qty. (Kg)	(%)	Taka	Qty. (Kg)	Taka
Export	0.0	0.00	0.0	0.00	21,946.0	0.04%	197.63	9,986.3	0.02%	198.85	-11,959.7	1.22
Internal	2,518,520.0	199.10	2,151,314.2	204.01	51,413,110.2	99.96%	200.29	47,058,712.6	99.98%	200.44	-4,354,397.6	0.15
Grand Total	2,518,520.0	199.10	2,151,314.2	204.01	51,435,056.2	100.00%	200.29	47,068,698.9	100.0%	200.44	-4,366,357.3	0.15

Crop of Major Tea Producing & Exporting Countries

Country	Month	2020	2021	2022	(+/-) 2021	2020	2021	2022	(+/-) 2021
Bangladesh *	September	12.14	12.61	14.74	2.13	57.45	64.76	63.83	-0.92
North India	September	163.9	142.6	166.7	24.1	698.7	781.5	808.9	27.4
South India	September	24.1	20.6	23.3	2.7	160.1	181.9	175.8	-6.1
All India	September	188.0	163.2	190.0	26.8	858.8	963.4	984.7	21.3
Sri Lanka	August	22.4	23.8	18.2	-5.6	179.4	211.9	171.3	-40.6
Kenya	July	36.5	34.7	33.9	-0.9	377.0	308.8	304.2	-4.6

* Source: Bangladesh Tea Board's Monthly Statistical Bulletin

General + Other Market(s) This/Last Week

KOLKATA SALE 43- 28th & 29th OCTOBER, 2022

CTC: There was better demand. Good liquoring Assams were fully firm and at times dearer on competition. Cleaner, well-made medium Assams were fully firm to dearer whilst other descriptions were barely steady. Better Doors were firm to dearer. Plainer Doors were firm to at times dearer. Exporters operated on larger Brokens but were less active compared to the previous week. Local buyers operated on the Doors & other clean, well-made descriptions.

Tea Category	Brokens	Fannings	Dusts
BEST ASSAMS	413-461	401-437	401-437
GOOD ASSAMS	352-401	340-388	352-206
MED ASSAMS	206-291	206-279	206-291
BEST DOORS	304-316	304-316	NA
GOOD DOORS	255-291	255-291	NA
MED/PLN DOORS	146-219	146-206	146-170

COONOOR SALE 43- 28th OCTOBER, 2022

DEMAND: Similar pattern of demand continued as last week with erratic price fluctuations; however the best liquoring categories continue to meet with selective demand. MARKET: The total CTC leaf teas sold this week was 93.79 % (1178195.9kgs) of the total offering of 1256254.52Kgs. Up country and local traders were very selective. Improved buying was witnessed from the Exporters.

CTC Leaf(USC/KG)	Best	Good	Better Medium	Medium	Plain
Larger Brokens	147-177	117-144	103-115	93-102	81-92
Medium Brokens	158-181	126-153	117-125	95-115	87-93
Smaller Brokens	154-175	134-153	118-132	98-117	85-97
Fannings	146-176	115-144	108-114	95-107	79-93

MOMBASA SALE 43-24th /25th /26th OCTOBER, 2022

Improved general demand for the 194,376 packages (13,058,411.00 kilos) on offer at irregular levels following quality. 29.67% were neglected.

CTC QUOTATIONS	BP1 – USC	PF1 – USC	PD – USC	D1 - USC
Best	255 – 446	299 – 328	279 – 329	376 – 398
Good	262 – 304	300 – 312	278 – 306	375 – 393
Good Medium	260 – 300	296 – 312	278 – 285	350 – 388
Medium (KTDA)	250 – 276	244 – 286	258 – 274	245 – 307
Medium (Plantations)	240 – 290	222 – 252	210 – 230	212 – 303
Lower Medium	134 – 260	166 – 229	170 – 220	154 – 228
Plainer	110 – 204	130 – 214	135 – 196	138 – 194