

NATIONAL BROKERS LIMITED

<http://nationalbrokersbd.com/>

Tea Auctioneers since 1948

TEA MARKET REPORT – Sale 24 held on Monday 17th October, 2022

CTC LEAF: 53,475 packages of Current Season teas on offer met with a good demand.

BROKENS: A small weight of well made teas met with quite a strong demand and were generally firm. Medium varieties met with quite a good demand but were a little easier often by Tk.3/- to Tk.5/-. Plain sorts met with fair demand at easier rates often declining by Tk.4/- to Tk.6/- with some withdrawals. BLFs once again were selective but prices held on last levels. There were some withdrawals.

FANNINGS: A few best liquoring Fannings met with a stronger demand and tended dearer whilst Good and Mediums met with a fairly good demand but were easier by Tk.3/- to Tk.5/- with a few withdrawals. Plain types were discounted further and there were several withdrawals in this category. BLFs once again were selective but prices held on last levels. There were some withdrawals.

CTC DUST: 12,017 packages of Current Season teas on offer met with a fairly good demand. Good liquoring Dusts sold well by Tk.2/- to Tk.5/- higher than last levels. Mediums met with fair demand easing by Tk.8/- to Tk.10/- over last. Once again Plain and BLF Dusts witnessed a decline in price levels with some withdrawals. Blenders were active with fair interest from the Loose tea buyers.

COMMENTS: Offerings were fairly heavy and owing to less competition, prices declined a little. However, a few bright liquoring types witnessed fair competition and were slightly dearer. Blenders were the mainstay of the market with limited support from the Loose tea buyers.

Good liquoring Dusts continued to meet with more competition.

Our catalogue: (Sale 24) Avg: Tk 215.49, Sold 77.6% & (Sale 23) Avg: Tk 218.16, sold 75.6%.

Quotations – This Week – (In Taka)

Brokens	This Week	Last Week	Fannings	This week	Last Week	Dust	This week	Last Week
Large	212-218 nom	220-225 nom	Best	235-245	245-255	PD	205-258	165-300
Medium	212-222	222-230	Good	225-230	234-242	RD	160-400	150-270
Small	215-225	222-232	Medium	215-220	225-230	D	183-280	175-283
Plain	185-195	190-200	Plain	185-195	190-200	CD	210-308	155-380
BLF	130-155	130-165	BLF	130-155	130-165	BLF	180-210	150-210

Exchange Rates 17th October, 2022 Sterling Pound: Tk. 111.1969, dollar: Tk. 99.0000

Top Prices – This Week

Category – CTC	Garden	Grade	Package	Price	Buyer(s)
Brokens	Ghazipore	GBOP	20	276/-	TPT/Rajdhani
Fannings	* Madhupur	PF	30	398/-	Meghna/AKT
Clonal Brokens	Kedarpur	GBOP(BT1)	10	394/-	AKT
Clonal Fannings	Kedarpur	PF(BT1)	10	412/-	Meghna
PD/RD (Incl Clone)	* Madhupur	RD(BT1)	10	400/-	Meghna
D (Incl Clone)	Kedarpur	D(BT1)	10	382/-	AKT
CD (Incl Clone)	* Madhupur	CD (BT1)	10	380/-	Ariya

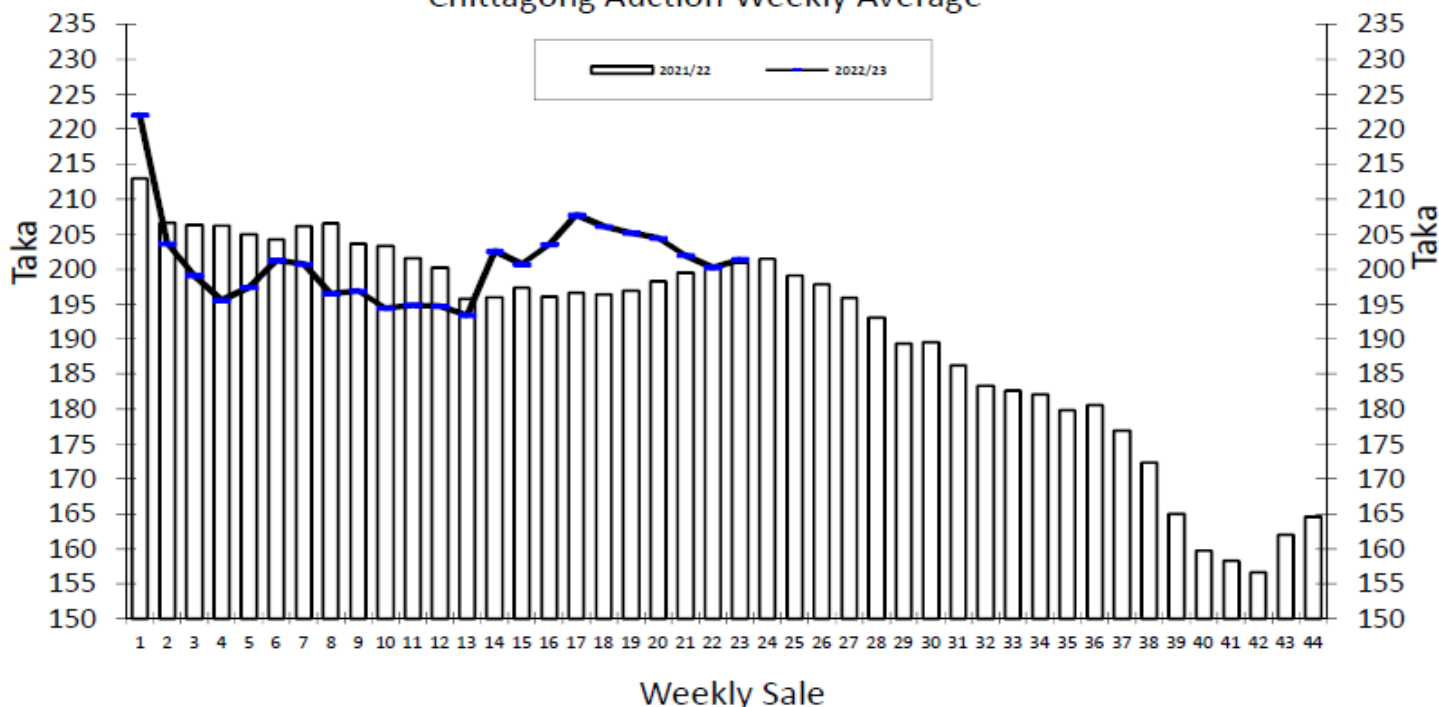
* Above price(s) realised in our catalogue

Offerings

Type	This Sale (Sale 24)				Next Sale (Sale 25)			
	Season 2022-23		Season 2021-22		Season 2022-23		Season 2021-22	
	Packages	Qty/Kg	Packages	Qty/Kg	Packages	Qty/Kg	Packages	Qty/Kg
Leaf	53,475	2,668,403	40,618	2,226,679	54,742	2,731,626	47,165	2,585,585
Dust	12,017	599,648	10,593	574,051	12,086	603,091	11,320	612,959
Total	65,492	3,268,051	51,211	2,800,730	66,828	3,334,717	58,485	3,198,545

Chittagong Auction Average: Sale 23
Season 2022/23: Tk. 201.39 & Season 2021/22: Tk. 200.93

Chittagong Auction Weekly Average



Quantities of Teas Sold & Average Prices Realised

Category	For the Sale				Up-to-Date Sale							
	Season 2021/22		Season 2022/23		Season 2021/22		Season 2022/23		Season 2022/23		(+/-) Season 2021/22	
	Qty. (Kg)	Taka	Qty. (Kg)	Taka	Qty. (Kg)	(%)	Taka	Qty. (Kg)	(%)	Taka	Qty. (Kg)	Taka
CTC LEAF	2,128,626.2	197.78	1,905,448.2	197.21	36,192,669.2	77.6%	197.06	33,493,535.2	78.5%	194.48	-2,699,134.0	-2.58
CTC DUST	497,408.2	214.40	471,996.1	218.27	10,139,841.3	21.8%	212.72	9,116,900.5	21.4%	221.36	-1,022,940.8	8.65
Sub-Total	2,626,034.4	200.93	2,377,444.3	201.39	46,332,510.5	99.4%	200.49	42,610,435.7	99.9%	200.23	-3,722,074.8	-0.26
Orthodox	0.0	0.00	0.0	0.00	26,035.0	0.1%	101.48	0.0	0.0%	0.00	-26,035.0	-101.48
Total	2,626,034.4	200.93	2,377,444.3	201.39	46,358,545.5	99.4%	200.43	42,610,435.7	99.9%	200.23	-3,748,109.8	-0.20
Green Tea	35.5	1,332.39	26.0	1,376.35	10,270.9	0.0%	452.85	2,391.5	0.0%	422.48	-7,879.4	-30.37
Yellow Tea	0.0	0.00	0.0	0.00	20.0	0.0%	1,400.00	0.0	0.0%	0.00	-20.0	-1,400.00
Total	2,626,069.9	200.94	2,377,470.3	201.40	46,368,836.4	99.5%	200.49	42,612,827.2	99.9%	200.24	-3,756,009.2	-0.24
Other (s)	0.0	0.00	0.0	0.00	249,798.6	0.5%	163.91	27,012.5	0.1%	120.25	-222,786.1	-43.66
G.Total	2,626,069.9	200.94	2,377,470.3	201.40	46,618,635.0	100.0%	200.29	42,639,839.7	100%	200.19	-3,978,795.3	-0.10

Buyer Purchase Analysis

Buyer	For the Sale				Up-to-Date Sale							
	Season 2021/22		Season 2022/23		Season 2021/22		Season 2022/23		Season 2022/23		(+/-) Season 2021/22	
	Qty. (Kg)	Taka	Qty. (Kg)	Taka	Qty. (Kg)	(%)	Taka	Qty. (Kg)	(%)	Taka	Qty. (Kg)	Taka
Export	0.0	0.00	0.0	0.00	21,946.0	0.05%	197.63	9,986.3	0.02%	198.85	-11,959.7	1.22
Internal	2,626,069.9	200.94	2,377,470.3	201.40	46,596,689.0	99.95%	200.29	42,629,853.4	99.98%	200.19	-3,966,835.6	-0.10
Grand Total	2,626,069.9	200.94	2,377,470.3	201.40	46,618,635.0	100.00%	200.29	42,639,839.7	100.0%	200.19	-3,978,795.3	-0.10

Crop of Major Tea Producing & Exporting Countries

Country	Month	2020	2021	2022	(+/-) 2021	2020	2021	2022	(+/-) 2021
Bangladesh *	August	11.32	14.39	10.76	-3.63	45.31	52.15	49.09	-3.06
Sri Lanka	August	22.4	23.8	18.2	-5.6	179.4	211.9	171.3	-40.6
North India	August	143.0	155.0	166.4	11.4	534.9	638.9	642.1	3.2
South India	August	16.8	16.6	14.3	-2.3	135.9	161.3	152.5	-8.8
All India	August	159.8	171.6	180.7	9.1	670.8	800.2	794.6	-5.6
Kenya	June	46.0	43.5	43.3	-0.2	301.0	274.1	270.4	-3.7

* Source: Bangladesh Tea Board's Monthly Statistical Bulletin

General + Other Market(s) This/Last Week

KOLKATA SALE 41- 11TH & 12TH OCTOBER, 2022

CTC: There was good demand. Better Assams were irregular around last levels, except for clean well-made & good liquoring descriptions which sold at firm to at times dearer rates. Cleaner, well-made medium Assams met with good demand and sold at irregular levels around last whilst other medium descriptions were easier. Better Doars were barely steady and sold irregularly at easier levels. Plainer Doars were steady. Exporters operated on larger brokens. Local buyers operated on the Doars & other clean, well-made descriptions.

Tea Category	Brokens	Fannings	Dusts
BEST ASSAMS	389-437	377-425	389-425
GOOD ASSAMS	316-377	304-364	328-377
MED ASSAMS	194-279	194-267	207-279
BEST DOOARS	304-316	304-316	NA
GOOD DOOARS	255-292	255-292	NA
MED/PLN DOOARS	134-219	134-207	134-170

SILIGURI SALE 41- 12TH OCTOBER 2022

LEAF & DUST: Good demand. Liquoring sorts across all categories tended firm to dearer with competition. Remainder were irregular & followed quality. Buying Pattern: Internal - Main stay. Blenders- Active. Exporters- Selective.

Quotations (USC/KG)	Brokens(USC/kg)	Fannings(USC/kg)	Dust (USC/kg)
Good / Best	273-407	261-389	243-328
Medium/ Better Medium	200-261	194-255	188-237
Common / BLF	134-188	140-182	146-182

COONOOR SALE 41- 14TH OCTOBER, 2022

DEMAND: - Feeble demand on the best teas. Good demand for good, better medium and medium sorts. Good improved demand for the plainer category teas. MARKET: - The total CTC leaf teas sold this week was 90.80 % (1142710.91kgs) of the total offering of 1258524.49Kgs. Exporters were fairly active on the larger, medium broken & select fanning grade.

CTC Leaf(USC/KG)	Best	Good	Better Medium	Medium	Plain
Larger Brokens	156-191	124-154	114-123	86-113	80-85
Medium Brokens	170-227	145-168	132-142	94-131	81-92
Smaller Brokens	171-210	140-168	132-139	103-131	86-102
Fannings	199-208	141-168	131-140	109-130	91-108

MOMBASA SALE 41-11TH /12TH OCTOBER, 2022

Improved demand at dearer levels for most of the categories of the 180,760 packages (12,098,670.50 kilos) on offer with 26.50% unsold.

CTC QUOTATIONS	BP1 – USC	PF1 – USC	PD – USC	D1 - USC
Best	277 – 436	285 – 324	274 – 306	330 – 370
Good	270 – 318	280 – 299	274 – 292	330 – 366
Good Medium	268 – 284	280 – 298	270 – 286	270 – 364
Medium (KTDA)	250 – 278	244 – 272	258 – 268	245 – 312
Medium (Plantations)	234 – 304	224 – 250	200 – 222	200 – 302
Lower Medium	135 – 264	145 – 232	156 – 210	157 – 220
Plainer	102 – 190	120 – 205	132 – 182	144 – 195