

NATIONAL BROKERS LIMITED

<http://nationalbrokersbd.com/>

Tea Auctioneers since 1948

TEA MARKET REPORT – Sale 23 held on Monday 10th October, 2022

CTC LEAF: 60,406 packages of Current Season teas were on offer.

BROKENS: A handful of well made good liquoring BOPs/GBOPs were a dearer market with prices appreciating further by Tk.5/- to Tk.10/- and sometimes more following competition. Medium varieties met with good demand at around last levels. Plainer sorts met with less demand and were mostly easier in line with quality. BLFs met with a selective market at around last levels with more withdrawals.

FANNINGS: Best liquoring Fannings were again a strong feature of the sale and advanced by Tk.10/- and more following competition. Good and Medium varieties were mostly firm to occasionally dearer. Plainer types, however, met with less interest and generally eased following quality with a little more withdrawals. BLFs met with a selective market at around last levels with more withdrawals.

CTC DUST: 13,111 packages of Current Season teas on offer met with good demand. Good liquoring Dusts sold well at around last levels. Mediums met with fair demand easing by Tk.5/- to Tk.8/- over last. Once again Plain and BLF Dusts witnessed a decline in price levels with more withdrawals. Blenders lent strong support with fair interest from the Loose tea buyers.

COMMENTS: There was a large weight of plainer varieties on offer which witnessed stronger competition and were substantially dearer. Select few lines of good liquoring varieties were again a strong feature of the sale and prices for these appreciated further following competition. Blenders lent stronger support with more interest from the Loose tea buyers.

Good liquoring Dusts continued to meet with more competition.

Our catalogue: (Sale 23) Avg: Tk 218.31, Sold 74.8% & (Sale 22) Avg: Tk 227.21, sold 69.9%.

Quotations – This Week – (In Taka)

Brokens	This Week	Last Week	Fannings	This week	Last Week	Dust	This week	Last Week
Large	220-225 nom	222-227 nom	Best	245-255	242-255	PD	165-300	210-265
Medium	222-230	224-232	Good	234-242	232-240	RD	150-270	150-295
Small	222-232	225-234	Medium	225-230	225-230	D	175-283	153-275
Plain	190-200	190-205	Plain	190-200	190-205	CD	155-380	170-314
BLF	130-165	130-165	BLF	130-165	130-165	BLF	150-210	150-170

Exchange Rates 12th October, 2022 Sterling Pound: Tk. 109.6921, dollar: Tk. 99.0000

Top Prices – This Week

Category – CTC	Garden	Grade	Package	Price	Buyer(s)
Brokens	Ghazipore	GBOP	20	280/-	Mollah/Meghna
Fannings	Ghazipore	OF	30	267/-	Mollah/Meghna
Clonal Brokens	Kedarpur	GBOPS(BT1)	10	399/-	Meghna
Clonal Fannings	Kedarpur	PF(BT1)	10	377/-	AKT
PD/RD (Incl Clone)	Kedarpur	RD	10	389/-	MA
D (Incl Clone)	* Amrail	D	20	283/-	Shawon/NBT
CD (Incl Clone)	*Madhupur	CD(BT1)	10	380/-	Pabna

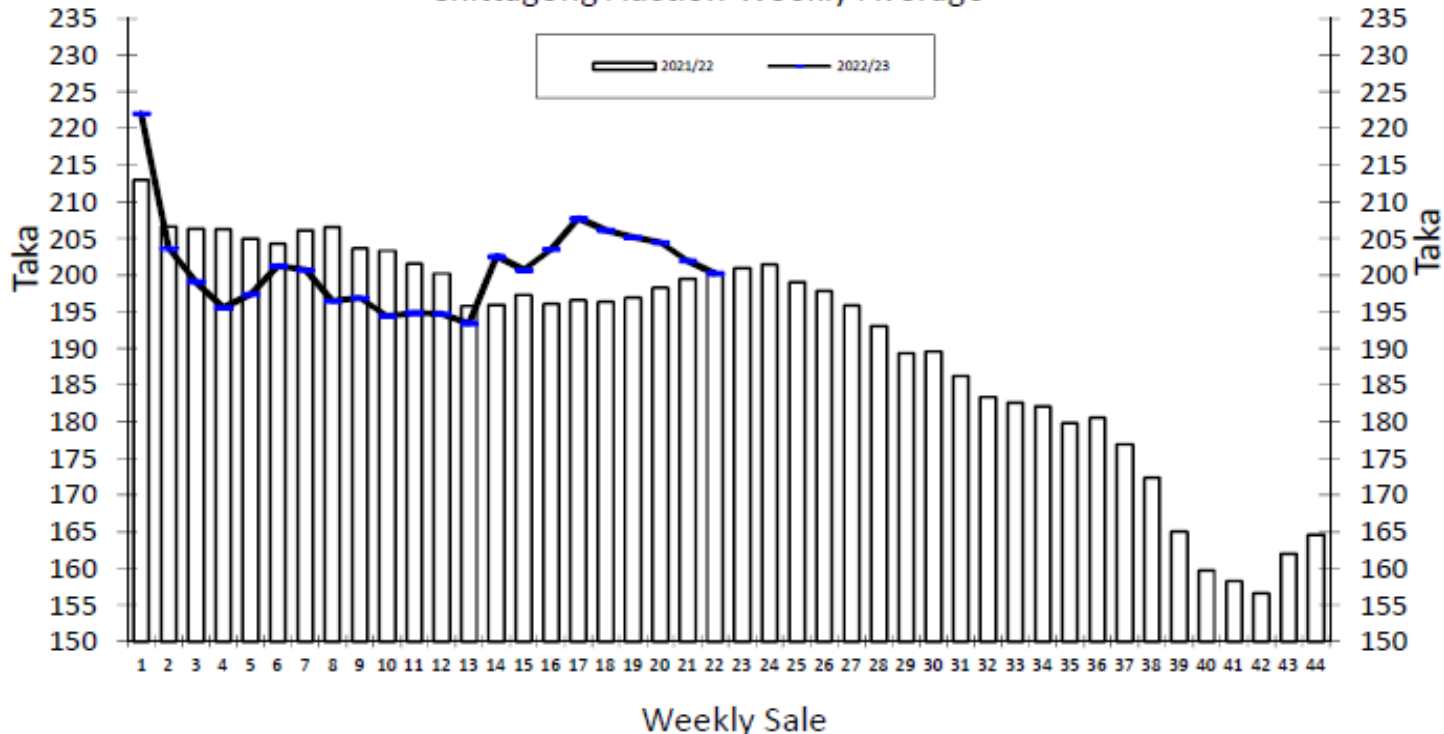
* Above price(s) realised in our catalogue

Offerings

Type	This Sale (Sale 23)				Next Sale (Sale 24)			
	Season 2022-23		Season 2021-22		Season 2022-23		Season 2021-22	
	Packages	Qty/Kg	Packages	Qty/Kg	Packages	Qty/Kg	Packages	Qty/Kg
Leaf	60,406	3,014,259	48,935	2,682,617	53,475	2,668,403	40,618	2,226,679
Dust	13,111	654,239	12,567	680,928	12,017	599,648	10,593	574,051
Total	73,517	3,668,498	61,502	3,363,544	65,492	3,268,051	51,211	2,800,730

Chittagong Auction Average: Sale 22
Season 2022/23: Tk. 200.25 & Season 2021/22: Tk. 200.14

Chittagong Auction Weekly Average



Quantities of Teas Sold & Average Prices Realised

Category	For the Sale				Up-to-Date Sale							
	Season 2021/22		Season 2022/23		Season 2021/22		Season 2022/23			(+/-) Season 2021/22		
	Qty. (Kg)	Taka	Qty. (Kg)	Taka	Qty. (Kg)	(%)	Taka	Qty. (Kg)	(%)	Taka	Qty. (Kg)	Taka
CTC LEAF	2,431,272.0	197.83	1,611,197.4	195.95	34,064,043.0	77.4%	197.02	31,560,632.1	78.4%	194.36	-2,503,410.9	-2.65
CTC DUST	517,771.6	211.01	392,895.1	217.89	9,642,433.1	21.9%	212.63	8,644,904.4	21.5%	221.53	-997,528.7	8.90
Sub-Total	2,949,043.6	200.14	2,004,092.5	200.25	43,706,476.1	99.3%	200.46	40,205,536.5	99.9%	200.20	-3,500,939.6	-0.26
Orthodox	0.0	0.00	0.0	0.00	26,035.0	0.1%	101.48	0.0	0.0%	0.00	-26,035.0	-101.48
Total	2,949,043.6	200.14	2,004,092.5	200.25	43,732,511.1	99.4%	200.40	40,205,536.5	99.9%	200.20	-3,526,974.6	-0.20
Green Tea	57.0	1,519.30	16.5	1,351.82	10,235.4	0.0%	449.80	2,365.5	0.0%	412.00	-7,869.9	-37.80
Yellow Tea	0.0	0.00	0.0	0.00	20.0	0.0%	1,400.00	0.0	0.0%	0.00	-20.0	-1,400.00
Total	2,949,100.6	200.17	2,004,109.0	200.26	43,742,766.5	99.4%	200.46	40,207,902.0	99.9%	200.22	-3,534,864.5	-0.24
Other (s)	0.0	0.00	491.0	120.00	249,798.6	0.6%	163.91	27,012.5	0.1%	120.25	-222,786.1	-43.66
G.Total	2,949,100.6	200.17	2,004,600.0	200.24	43,992,565.1	100.0%	200.25	40,234,914.5	100%	200.16	-3,757,650.6	-0.09

Buyer Purchase Analysis

Buyer	For the Sale				Up-to-Date Sale							
	Season 2021/22		Season 2022/23		Season 2021/22		Season 2022/23			(+/-) Season 2021/22		
	Qty. (Kg)	Taka	Qty. (Kg)	Taka	Qty. (Kg)	(%)	Taka	Qty. (Kg)	(%)	Taka	Qty. (Kg)	Taka
Export	0.0	0.00	0.0	0.00	21,946.0	0.05%	197.63	9,986.3	0.02%	198.85	-11,959.7	1.22
Internal	2,949,100.6	200.17	2,004,600.0	200.24	43,970,619.1	99.95%	200.26	40,224,928.2	99.98%	200.16	-3,745,690.9	-0.09
Grand Total	2,949,100.6	200.17	2,004,600.0	200.24	43,992,565.1	100.00%	200.25	40,234,914.5	100.0%	200.16	-3,757,650.6	-0.09

Crop of Major Tea Producing & Exporting Countries

Country	Month	2020	2021	2022	(+/-) 2021	2020	2021	2022	(+/-) 2021
Bangladesh *	August	11.32	14.39	10.76	-3.63	45.31	52.15	49.09	-3.06
Sri Lanka	August	22.4	23.8	18.2	-5.6	179.4	211.9	171.3	-40.6
North India	August	143.0	155.0	166.4	11.4	534.9	638.9	642.1	3.2
South India	August	16.8	16.6	14.3	-2.3	135.9	161.3	152.5	-8.8
All India	August	159.8	171.6	180.7	9.1	670.8	800.2	794.6	-5.6
Kenya	June	46.0	43.5	43.3	-0.2	301.0	274.1	270.4	-3.7

* Source: Bangladesh Tea Board's Monthly Statistical Bulletin

General + Other Market(s) This/Last Week

COONOOR SALE 40- 7TH OCTOBER, 2022

DEMAND: - Continued suppressed demand on the best liquoring teas. Good category teas met with fair demand. Better medium, medium & plainer teas met with fair but selective demand at easier price levels. **MARKET:** -The total CTC leaf teas sold this week was **74.68 % (1067227.33kgs)** of the total offering of **1428974.63Kgs**. Best and good liquoring larger Broken sold at irregular prices barring few odd lines sold at firm to dearer rates however, all other sorts declined hugely across the teas on offer. The better medium, medium and plainer teas declined in the range of Rs 3 to 5 and sometimes more across the grades. The medium broken in all categories suffered huge withdrawals. **BUYING PATTERN:** - The major Blenders continued to be fairly active and absorbed as much as **47.21%** of the total CTC leaf sold quantity. Regional packateers were fairly active at lower levels. Up country buyers and local traders continued to be choosy. Exporters operated this week selectively on the larger and medium Broken and on select Fanning, especially on the medium category teas. Browner sorts in all categories faced withdrawals.

CTC Leaf(USC/KG)	Best	Good	Better Medium	Medium	Plain
Larger Brokens	145-195	119-144	110-117	85-109	73-84
Medium Brokens	166-238	136-163	126-134	92-125	90-91
Smaller Brokens	163-212	136-161	127-134	100-126	85-99
Fannings	156-192	134-154	125-133	110-123	97-109

MOMBASA SALE 40- 3RD /4TH & 5TH OCTOBER, 2022

Fairly good demand following quality for the 183,420 packages (12,181,172.00 kilos) in the market; 24.27% remained unsold.

CTC QUOTATIONS	BP1 – USC	PF1 – USC	PD – USC	D1 - USC
Best	273 – 470	280 – 313	273 – 305	312 – 332
Good	268 – 316	273 – 296	272 – 286	308 – 328
Good Medium	255 – 282	273 – 288	272 – 282	301 – 332
Medium (KTDA)	250 – 278	244 – 274	258 – 266	245 – 302
Medium (Plantations)	220 – 272	200 – 242	195 – 220	197 – 274
Lower Medium	133 – 258	156 – 232	140 – 206	159 – 204
Plainer	106 – 166	116 – 207	124 – 180	132 – 194

KOLKATA/SILIGURI : Sale 40- Dropped this week.