

# NATIONAL BROKERS LIMITED

<http://nationalbrokersbd.com/>

**Tea Auctioneers since 1948**

## TEA MARKET REPORT – Sale 31 held on Monday 13<sup>th</sup> December, 2021

**CTC LEAF:** 55,775 packages of Current Season teas on offer met with more enquiry at irregular rates.

**BROKENS:** A fair weight of good Brokens met with more competition and sold in line with quality often at slightly dearer rates. Good Mediums elicited more interest and sold at around last levels. Medium and plainer teas met with more support but at easier rates and there were several withdrawals in this category. BLF teas continued to meet with a limited interest at easier rates with quite heavy withdrawals.

**FANNINGS:** Select few lines of well made, good liquoring Fannings were a fairly strong market and were generally dearer following competition. Good Medium types saw more interest and sold fairly well in line with quality. Plain teas saw more demand but eased further with fair withdrawals. BLF teas once again met with a limited interest at easier rates with quite heavy withdrawals.

**CTC DUST:** 10,706 packages of Current Season teas on offer met with a strong demand. The best

liquoring Dusts particularly the CDs met with good competition and advanced by Tk.10/- to Tk.15/-. Good and Medium Dusts were fully firm to dearer market. However, plain and BLF Dusts were mostly irregularly easier and saw several withdrawals particularly the latter. Blenders lent strong support with fair interest from the Loose tea market.

**COMMENTS:** Buyers were operating quite strongly on well made/good liquoring teas whereby these varieties were firm to dearer particularly as the sale progressed. All Medium types saw good demand and there were less withdrawals. Blenders operated on a more wider scale whereby a higher percentage of teas were sold. Loose tea buyers lent a little more support than last.

Good liquoring Dusts particularly the CDs were a strong feature of the sale.

**Our catalogue ( Sale 31 ): Avg: Tk 196.77, Sold 74.0 % & ( Sale 30 ) Avg: Tk 195.88, sold 60.2 %.**

### Quotations – This Week – (In Taka)

Brokens	This Week	Last Week	Fannings	This week	Last Week	Dust	This week	Last Week
Large	NQTA	NQTA	Best	200-205 nom	197-202	PD	185-297	190-267
Medium	175-182	175-183	Good	185-190	184-190	RD	138-297	150-272
Small	178-188	177-187	Medium	177-182	175-180	D	147-295	151-260
Plain	160-170	162-170	Plain	160-170	162-170	CD	145-309	150-311
BLF	132-142	140-152	BLF	132-142	140-152	BLF	138-165	150-170

Exchange Rates 13<sup>th</sup> December, 2021 Sterling Pound: Tk. 111.9603 dollar: Tk. 84.5672

### Top Prices – This Week

Category – CTC	Garden	Grade	Package	Price	Buyer(s)
Brokens	Brindabon	GBOP	20	230/-	Mollah/AKT
Fannings	Brindabon	DMPF	10	239/-	AKT
Clonal Brokens	Kaiyacehrra Dalu	GBOP	10	276/-	Ali
Clonal Fannings	Kaiyacherra Dalu	OF	10	278/-	AKT
PD/RD Incl. Clone	* Balisera	RD/PD	10/10	297/-	Danish
D Incl. Clone	* Amrail	D	20	295/-	Danish
CD Incl. Clone	* Ruthna	CD	10	309/-	ATH

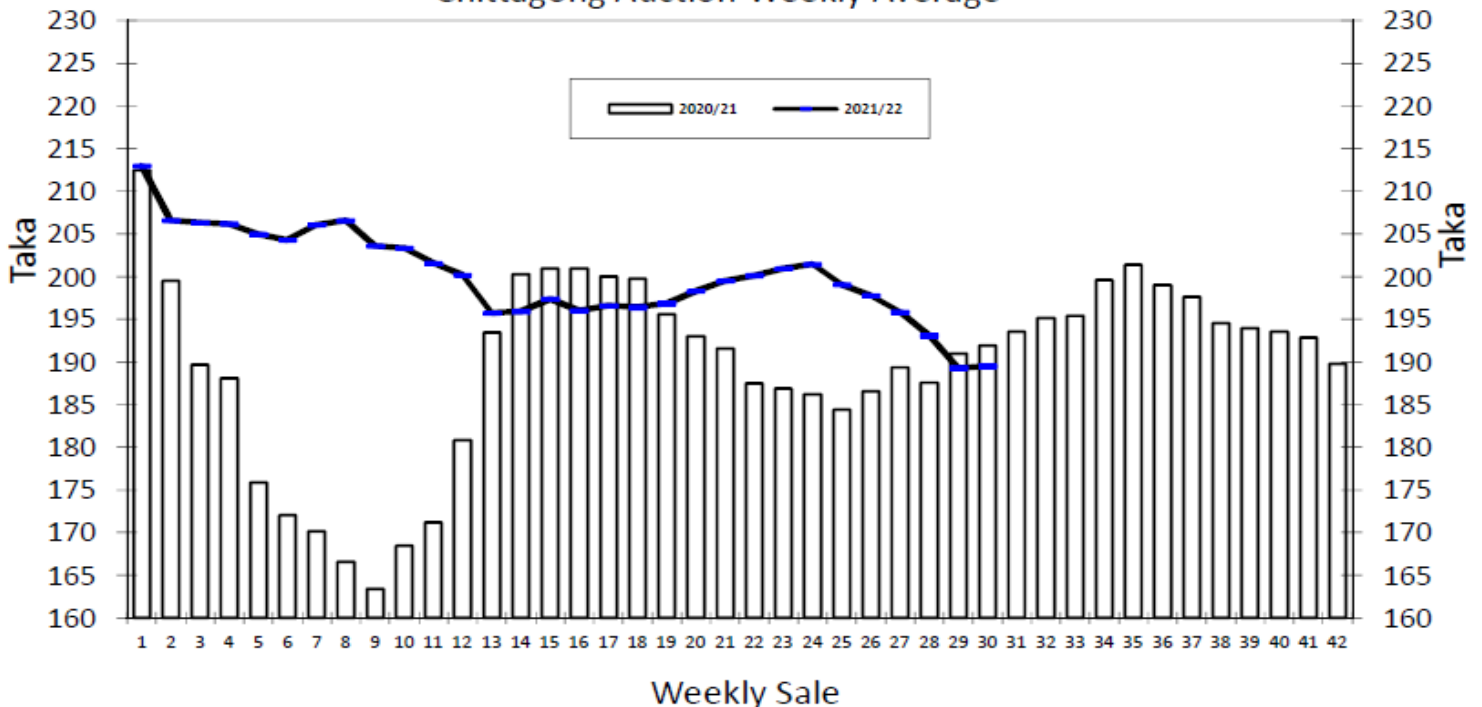
\* Above price(s) realised in our catalogue

### Offerings

Type	This Sale ( Sale 31 )				Next Sale ( Sale 32 )			
	Season 2021-2022		Season 2020-2021		Season 2021-2022		Season 2020-2021	
	Packages	Qty/Kg	Packages	Qty/Kg	Packages	Qty/Kg	Packages	Qty/Kg
Leaf	55,775	3,057,586	38,228	2,094,894	53,742	2,947,211	39,317	2,154,572
Dust	10,706	578,260	10,465	573,482	10,636	582,853	9,438	517,202
Total	66,481	3,635,846	48,693	2,668,376	64,378	3,530,064	48,755	2,671,774

Chittagong Auction Average: ( Sale – 30 )  
Season 2021-22: Tk. 189.53 & Season 2020-21: Tk. 191.89

### Chittagong Auction Weekly Average



## Quantities of Teas Sold &amp; Average Prices Realised

Category	For the Sale				Up-to-Date Sale							
	Season 2020/21		Season 2021/22		Season 2020/21		Season 2021/22			(+/-) Season 2020/21		
	Qty. (Kg)	Taka	Qty. (Kg)	Taka	Qty. (Kg)	(%)	Taka	Qty. (Kg)	(%)	Taka	Qty. (Kg)	Taka
CTC LEAF	1,775,723.0	184.00	1,761,763.7	185.92	48,626,811.6	79.4%	181.00	49,201,767.4	78.3%	195.68	574,955.8	14.68
CTC DUST	437,437.1	223.93	484,251.8	202.67	12,151,578.1	19.8%	213.23	13,386,972.3	21.3%	211.70	1,235,394.2	-1.53
Sub-Total	2,213,160.1	191.89	2,246,015.5	189.53	60,778,389.7	99.2%	187.44	62,588,739.7	99.5%	199.11	1,810,350.0	11.66
Orthodox	69.0	1,000.00	0.0	0.00	25,991.0	0.0%	121.18	26,105.0	0.0%	104.44	114.0	-16.74
Total	2,213,229.1	191.92	2,246,015.5	189.53	60,804,380.7	99.3%	187.42	62,614,844.7	99.6%	199.07	1,810,464.0	11.65
Green Tea	0.0	0.00	44.0	1,268.52	5,276.7	0.0%	506.79	10,535.4	0.0%	475.18	5,258.7	-31.61
Yellow Tea	2,654,318.8	186.29	0.0	0.00	0.0	0.0%	0.00	20.0	0.0%	1,400.00	20.0	1,400.00
Total	2,213,229.1	191.92	2,246,059.5	189.55	60,809,657.4	99.3%	187.44	62,625,400.1	99.6%	199.11	1,815,742.7	11.67
Other (s)	2,194.0	148.75	0.0	0.00	441,396.7	99.8%	112.84	250,891.2	0.4%	163.74	-190,505.5	50.90
G.Total	2,215,423.1	191.87	2,246,059.5	189.55	61,251,054.1	100.0%	186.91	62,876,291.3	100%	198.97	1,625,237.2	12.07

## Buyer Purchase Analysis

Buyer	For the Sale				Up-to-Date Sale							
	Season 2020/21		Season 2021/22		Season 2020/21		Season 2021/22			(+/-) Season 2020/21		
	Qty. (Kg)	Taka	Qty. (Kg)	Taka	Qty. (Kg)	(%)	Taka	Qty. (Kg)	(%)	Taka	Qty. (Kg)	Taka
Export	0.0	0.00	0.0	0.00	130,278.8	0.21%	199.36	24,143.6	0.0%	199.24	-106,135.2	-0.13
Internal	2,215,423.1	191.87	2,246,059.5	189.55	61,120,775.3	99.79%	186.88	62,852,147.7	100.0%	198.97	1,731,372.4	12.09
Grand Total	2,215,423.1	191.87	2,246,059.5	189.55	61,251,054.1	100.00%	186.91	62,876,291.3	100.0%	198.97	1,625,237.2	12.07

## Crop of Major Tea Producing &amp; Exporting Countries

Country	Qty. (M.Kg)	For the Month				Up-to-Date			
		Month	2019	2020	2021 (+/-) 2020	2019	2020	2021 (+/-) 2020	
Bangladesh *	October	13.41	11.49	14.58	3.09	79.35	68.94	79.33	10.40
Sri Lanka	October	21.3	23.8	23.9	0.1	254.3	225.2	258.6	33.4
North India	October	151.8	155.5	167.3	11.8	1005.1	854.3	940.7	86.4
South India	October	25.2	20.2	21.3	1.1	179.1	180.2	204.2	24.0
All India	October	177.0	175.7	188.6	12.9	1184.2	1034.5	1144.9	110.4
Kenya	August	37.4	38.5	33.6	-4.9	281.5	376.8	342.4	-34.4

\* Source: Bangladesh Tea Board's Monthly Statistical Bulletin

## OTHER MARKET(S)

**KOLKATA SALE 49- 7<sup>TH</sup> /8<sup>TH</sup> & 9<sup>TH</sup> DECEMBER, 2021**

CTC: There was good demand. Best & good liquoring Assams were mostly irregularly easier. Well-made Assams in the medium categories were barely steady. The remainder was easier. Well-made, better liquoring Dooars were steady. Plainer categories were irregular around last levels. Regional packeteers showed some interest on medium & plainer sorts. Local buyers were active on the Dooars.

Tea Category USC/KG	Brokens	Fannings	Dusts
BEST ASSAMS	450-489	397-423	450-489
GOOD ASSAMS	357-423	331-383	357-436
MED ASSAMS	225-304	212-291	225-304
BEST DOOARS	357-370	344-357	NA
GOOD DOOARS	264-331	251-317	238-251
MED & PLAINER DOOARS	159-212	159-198	159-185

**COONOOR SALE 49- 10<sup>TH</sup> DECEMBER, 2021**

CTC : Selective demand. The total CTC leaf teas sold this week was 65.18 % (891495kgs) of the total offering of 1367692Kgs. Up country buyers and local traders were selective. Exporters were very selective on the range of teas on offer.

CTC Leaf(USC/KG)	Best	Good	Better Medium	Medium	Plain
Larger Brokens	163-200	131-141	126-130	111-124	99-110
Medium Brokens	205-245	173-193	135-171	120-134	111-119
Smaller Brokens	192-238	168-182	136-167	120-135	103-119
Fannings	180-239	145-176	131-144	112-130	103-111

**SILIGURI SALE 49- 8<sup>TH</sup> DECEMBER, 2021**

LEAF & DUST: Good demand. Improved sorts across all segments tended firm to dearer with competition. The remainder were irregular around last in line with quality. Buying Pattern: All sections operated.

Quotations (USC/KG)	Brokens(USC/kg)	Fannings(USC/kg)	Dust (USC/kg)
GOOD / BEST	370-463	357-450	304-370
MEDIUM / BETTER MEDIUM	251-357	238-344	225-291
COMMON / BLF	159-238	152-225	152-212

**MOMBASA SALE 49- 6<sup>TH</sup> /7<sup>TH</sup> & 8<sup>TH</sup> DECEMBER, 2021**

There was good general demand for the 177,590 packages (11,614,737.00 kilos) on offer with 14.53% unsold.

CTC QUOTATIONS	BP1 – USC	PF1 – USC	PD – USC	D1 - USC
Best	280 – 442	330 – 370	358 – 380	325 – 355
Good	257 – 346	328 – 360	358 – 385	322 – 354
Good Medium	260 – 316	320 – 338	324 – 364	297 – 352
Medium	260 – 267	260 – 320	270 – 318	235 – 312
Lower Medium	102 – 174	132 – 317	102 – 310	125 – 256
Plainer	080 – 144	070 – 216	077 – 190	070 – 193