

NATIONAL BROKERS LIMITED

http://nationalbrokersbd.com/

Tea Auctioneers since 1948

TEA MARKET REPORT – Sale 28 held on Monday 22nd November, 2021

**CTC LEAF:** 52,062 packages of Current Season teas on offer met with less demand with more withdrawals.

**BROKENS:** Well made good liquoring Brokens were well supported at around last levels and a few were dearer following competition. Medium varieties were in less demand and eased slightly by upto Tk.2/- whilst plainer types were in much less demand and where sold declined by Tk.3/- and more with heavy withdrawals. BLF teas declined further with heavy withdrawals.

**FANNINGS:** Good liquoring Fannings were a fairly strong market and were often slightly dearer following competition. Medium varieties also met with a fair demand but were a little easier. Plainer types were again in less demand and declined further with heavy withdrawals. BLF teas declined further with heavy withdrawals.

**CTC DUST:** 12,605 packages of Current Season teas on offer met with less demand. Good liquoring Dusts

were a good market and sold at around last levels. Medium varieties were an easier market and sold at a drop of Tk.3/- to Tk.5/- closely following quality. Plain and BLF Dusts met with much less demand and witnessed heavy withdrawals. Blenders lent strong support with fair interest from the Loose tea buyers.

**COMMENTS:** Good teas were in demand in this week’s sale and were well absorbed at around previous levels but other varieties were in much less demand and prices dropped further for these types. Blenders continued to lend good support particularly for the brighter varieties. There was slightly more demand from Loose tea buyers especially for the popular marks.

Dusts were an easier market.

**Our catalogue ( Sale 28 ): Avg: Tk 199.25, Sold 71.8 % & ( Sale 27 ) Avg: Tk 200.90, sold 74.2 %.**

Quotations – This Week – (In Taka)

Brokens	This Week	Last Week	Fannings	This week	Last Week	Dust	This week	Last Week
Large	NQTA	NQTA	Best	204-209	203-208	PD	170-269	200-255
Medium	183-190	185-192	Good	189-193	190-195	RD	155-270	167-278
Small	187-197	188-200	Medium	183-187	185-188	D	168-278	175-267
Plain	170-177	172-180	Plain	170-177	172-180	CD	170-326	165-310
BLF	145-155	155-165	BLF	145-155	155-165	BLF	155-171	165-179

Exchange Rates 22nd November, 2021 Sterling Pound: Tk. 113.9249 dollar: Tk. 84.5672

Top Prices – This Week

Category – CTC	Garden	Grade	Package	Price	Buyer(s)
Brokens	* Madhupur	GBOP	20	260/-	Banani
Fannings	* Madhupur	PF	30	252/-	Danish/AKT
Clonal Brokens	Kaiyacherra Dalu	GBOP	10	279/-	ATH
Clonal Fannings	Kaiyacherra Dalu	PF	11	292/-	Tara
PD/RD Incl. Clone	* Madhupur	RD(BT2)	10	285/-	AKT
D Incl. Clone	* Daragaon	D	20	278/-	AKT/ATH
CD Incl. Clone	* Madhupur	CD(BT1)	10	326/-	BTS

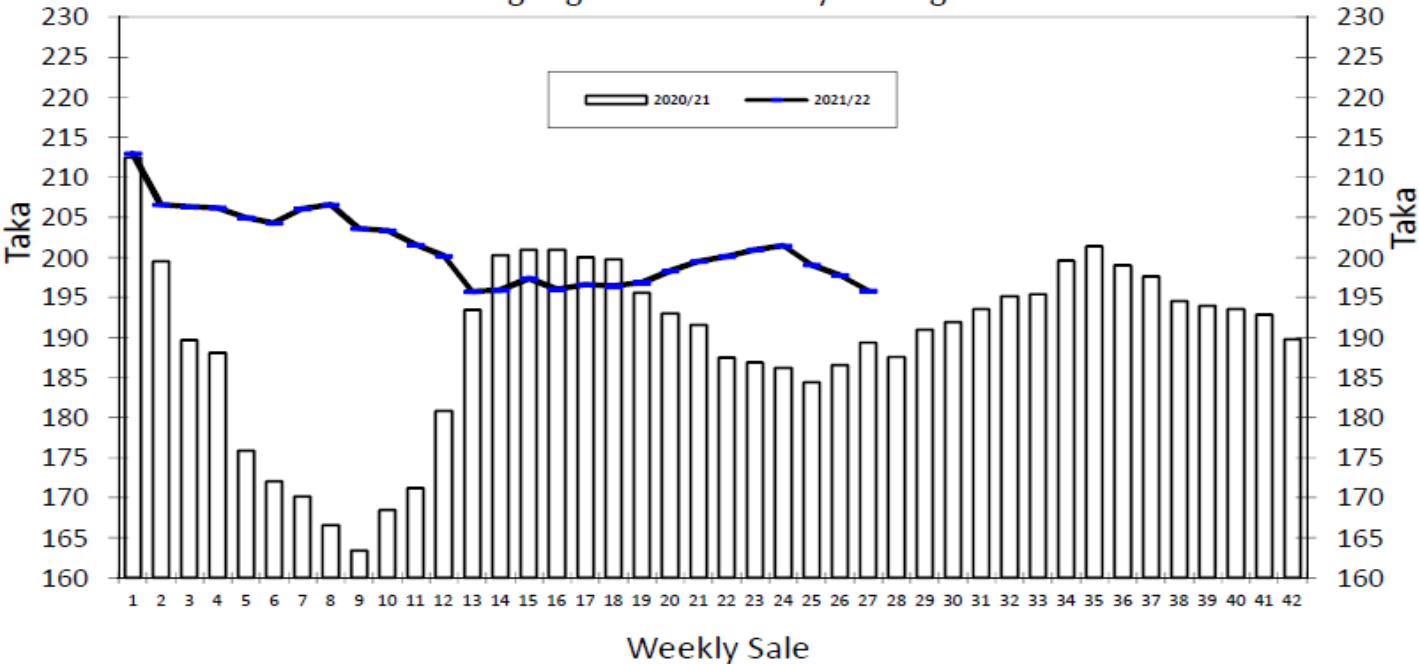
\* Above price(s) realised in our catalogue

Offerings

This Sale ( Sale 28 )					Next Sale ( Sale 29 )			
Season 2021-2022			Season 2020-2021		Season 2021-2022		Season 2020-2021	
Type	Packages	Qty/Kg	Packages	Qty/Kg	Packages	Qty/Kg	Packages	Qty/Kg
Leaf	52,062	2,854,039	47,542	2,605,302	63,920	3,505,373	46,714	2,559,927
Dust	12,605	682,599	8,866	485,857	12,186	667,793	9,292	509,202
Total	64,667	3,536,638	56,408	3,091,158	76,106	4,173,166	56,006	3,069,129

Chittagong Auction Average: ( Sale – 27 )  
Season 2021-22: Tk. 195.83 & Season 2020-21: Tk. 189.36

Chittagong Auction Weekly Average



Chittagong Auction Statistics - Sale: 27										Updated on: 22 November 2021			
Quantities of Teas Sold & Average Prices Realised													
For the Sale					Up-to-Date Sale								
Category	Season 2020/21		Season 2021/22		Season 2020/21		Season 2021/22		(+/-) Season 2020/21				
	Qty. (Kg)	Taka	Qty. (Kg)	Taka	Qty. (Kg)	(%)	Taka	Qty. (Kg)	(%)	Taka	Qty. (Kg)	Taka	
CTC LEAF	1,896,616.0	181.55	1,800,744.7	192.74	42,605,915.3	79.0%	180.81	43,651,601.9	78.1%	196.80	1,045,686.6	15.99	
CTC DUST	412,318.3	225.25	419,731.6	209.08	10,829,917.5	20.1%	211.61	11,946,393.6	21.4%	212.48	1,116,476.1	0.86	
Sub-Total	2,308,934.3	189.36	2,220,476.3	195.83	53,435,832.8	99.1%	187.06	55,597,995.5	99.5%	200.17	2,162,162.7	13.12	
Orthodox	0.0	0.00	0.0	0.00	25,922.0	0.0%	118.84	26,035.0	0.0%	101.48	113.0	-17.36	
Total	2,308,934.3	189.36	2,220,476.3	195.83	53,461,754.8	99.2%	187.02	55,624,030.5	99.5%	200.12	2,162,275.7	13.10	
Green Tea	73.5	933.33	35.5	1,260.00	5,237.7	0.0%	503.86	10,420.9	0.0%	465.50	5,183.2	-38.36	
Yellow Tea	2,654,318.8	186.29	0.0	0.00	0.0	0.0%	0.00	20.0	0.0%	1,400.00	20.0	1,400.00	
Total	2,309,007.8	189.38	2,220,511.8	195.85	53,466,992.5	99.2%	187.05	55,634,471.4	99.6%	200.17	2,167,478.9	13.12	
Other (s)	5,056.2	162.16	0.0	0.00	431,516.7	99.8%	112.77	250,346.2	0.4%	163.83	-181,170.5	51.06	
G.Total	2,314,064.0	189.32	2,220,511.8	195.85	53,898,509.2	100.0%	186.46	55,884,817.6	100%	200.01	1,986,308.4	13.55	

Buyer Purchase Analysis													
For the Sale							Up-to-Date Sale						
Buyer	Season 2020/21		Season 2021/22		Season 2020/21		Season 2021/22		Season 2020/21		Season 2021/22		(+/-) Season 2020/21
	Qty. (Kg)	Taka	Qty. (Kg)	Taka	Qty. (Kg)	(%)	Taka	Qty. (Kg)	(%)	Taka	Qty. (Kg)	(%)	Taka
Export	0.0	0.00	0.0	0.00	111,329.0	0.21%	195.79	24,143.6	0.0%	199.24	-87,185.4		3.45
Internal	2,314,064.0	189.32	2,220,511.8	195.85	53,787,180.2	99.79%	186.44	55,860,674.0	100.0%	200.01	2,073,493.8		13.57
Grand Total	2,314,064.0	189.32	2,220,511.8	195.85	53,898,509.2	100.00%	186.46	55,884,817.6	100.0%	200.01	1,986,308.4		13.55

Crop of Major Tea Producing & Exporting Countries										
Qty. (M.Kg)		For the Month				Up-to-Date				
Country	Month	2019	2020	2021	(+/-) 2020	2019	2020	2021	(+/-) 2020	
Bangladesh *	October	13.41	11.49	14.58	3.09	79.35	68.94	79.33	10.40	
Sri Lanka	September	21.9	22.0	22.6	0.6	232.9	201.4	234.4	33.0	
North India	September	168.9	163.9	141.4	-22.5	853.4	698.7	773.4	74.7	
South India	September	16.9	24.1	22.4	-1.7	153.8	160.1	182.9	22.8	
All India	September	185.8	188.0	163.8	-24.2	1007.2	858.8	956.3	97.5	
Kenya	August	37.4	38.5	33.6	-4.9	281.5	376.8	342.4	-34.4	

*\* Source: Bangladesh Tea Board's Monthly Statistical Bulletin*

### OTHER MARKET(S)

#### KOLKATA SALE 46- 16<sup>TH</sup> /17<sup>TH</sup> & 18<sup>TH</sup> NOVEMBER, 2021

CTC: There was good demand. Best and good Assams were fully firm to dearer and brightest descriptions appreciated further on competition. Clean, well-made medium sorts were well received and were firm to dearer. The remainder including brownish, fibrous and plainer liquoring sorts were around last. Export account showed some interest on larger Brokens. Regional packeteers were active. Local buyers were active on the Dooars.

Tea Category USC/KG	Brokens	Fannings	Dusts
BEST ASSAMS	484-524	430-457	470-524
GOOD ASSAMS	390-457	349-417	390-457
MED ASSAMS	242-336	228-309	228-336
BEST DOOARS	376-403	376-403	NA
GOOD DOOARS	296-336	282-323	242-255
MED & PLAINER DOOARS	161-215	161-202	161-188

#### SILIGURI SALE 46- 17<sup>TH</sup> NOVEMBER, 2021

LEAF & DUST: Good demand. Levels across all categories were steady to occasionally dearer in line with quality and competition. Buying Pattern: Internal & Blenders were active.

Quotations (USC/KG)	Brokens(USC/kg)	Fannings(USC/kg)	Dust (USC/kg)
GOOD / BEST	376-477	363-457	302-376
MEDIUM / BETTER MEDIUM	242-363	235-356	208-296
COMMON / BLF	155-228	155-228	155-202

#### COONOOR SALE 46- 19<sup>TH</sup> NOVEMBER, 2021

Continued Good demand. The total CTC leaf teas sold this week was **90.89 % (1078930kgs)** of the total offering of 1187021 Kgs. Exporters were active on the better medium, medium and plainer category larger and medium Broken grades and selective on the blacker cleaner Fanning grades.

CTC Leaf(USC/KG)	Best	Good	Better Medium	Medium	Plain
Larger Brokens	185-198	134-155	121-133	110-120	105-109
Medium Brokens	181-237	151-180	133-149	116-132	109-114
Smaller Brokens	188-250	155-177	134-153	116-133	99-114
Fannings	181-224	134-180	125-133	106-124	94-105

#### MOMBASA SALE 46- 15-17<sup>TH</sup> NOVEMBER, 2021

Good and improved general demand for the 187,520 packages (12,329,551.00 kilos) in the market and 12.66% were unsold.

CTC QUOTATIONS	BP1 – USC	PF1 – USC	PD – USC	D1 - USC
Best	267 – 505	315 – 346	325 – 354	312 – 354
Good	260 – 368	311 – 340	324 – 348	312 – 346
Good Medium	255 – 326	290 – 340	320 – 336	290 – 328
Medium	260 – 264	252 – 288	258 – 264	235 – 271
Lower Medium	100 – 181	110 – 226	090 – 288	102 – 230
Plainer	080 – 144	068 – 198	058 – 180	054 – 184