

NATIONAL BROKERS LIMITED

<http://nationalbrokersbd.com/>

Tea Auctioneers since 1948

TEA MARKET REPORT – Sale 23 held on Monday 18th October, 2021

CTC LEAF: 48,935 packages of Current Season teas on offer met with a fairly good demand.

BROKENS: Well made good liquoring Brokens were a quite good market and generally sold at around last levels. Their Mediums and plainer varieties tended easier particularly the latter. BLF teas sold fairly well at around last rates.

FANNINGS: Good liquoring Fannings once again met with a good market and were firm to slightly dearer. Medium sorts followed a similar trend and were about steady. Plain teas were a little easier following quality. BLF teas were again a good market at around last levels.

CTC DUST: 12,567 packages of Current Season teas on offer met with a fairly good demand. Well made brighter liquoring teas sold at irregularly around last

with select best Dusts gaining with competition. Others were slightly easier by Tk.2/- to Tk.3/- Plain and BLF Dusts met with a good market and were firm on last. Blenders lent strong support with fair interest from the Loose tea buyers.

COMMENTS: Good liquoring varieties continued to receive good support and were absorbed quite readily. All others also met with a fairly good demand and were about steady to a little easier following quality. Blenders lent useful support whilst Loose tea buyers were fairly active.

Good liquoring Dusts were the strong feature of the sale.

Our catalogue (Sale 23): Avg: Tk 205.01, Sold 79.3 %
& (Sale 22) Avg: Tk 203.54, sold 82.4 %.

Quotations – This Week – (In Taka)

Brokens	This Week	Last Week	Fannings	This week	Last Week	Dust	This week	Last Week
Large	180-195 nom	180-195 nom	Best	207-212	206-212	PD	180-272	176-259
Medium	191-202	192-203	Good	196-202	195-201	RD	177-271	168-270
Small	193-208	193-208	Medium	190-195	188-192	D	170-270	175-273
Plain	182-187	183-188	Plain	182-187	182-186	CD	179-330	170-340
BLF	160-180	160-180	BLF	160-180	160-180	BLF	170-190	168-182

Exchange Rates 18th October, 2021 Sterling Pound: Tk. 115.1053 dollar: Tk. 84.4177

Top Prices – This Week

Category – CTC	Garden	Grade	Package	Price	Buyer(s)
Brokens	* Madhupur	GBOPS	40	259/-	Ispahani/AKT
Fannings	* Madhupur	PF	30	250/-	Ispahani/AKT
Clonal Brokens	Kaiyacherra Dalu	GBOP	10	278/-	Shawon
Clonal Fannings	Kaiyacherra Dalu	OF	11	283/-	KT
PD/RD Incl. Clone	* Balisera	PD	10	272/-	Meghna
D Incl. Clone	* Daragaon	D	20	270/-	Shawon/Rajdhani
CD Incl. Clone	* Madhupur	CD(BT1)	10	330/-	Shawon

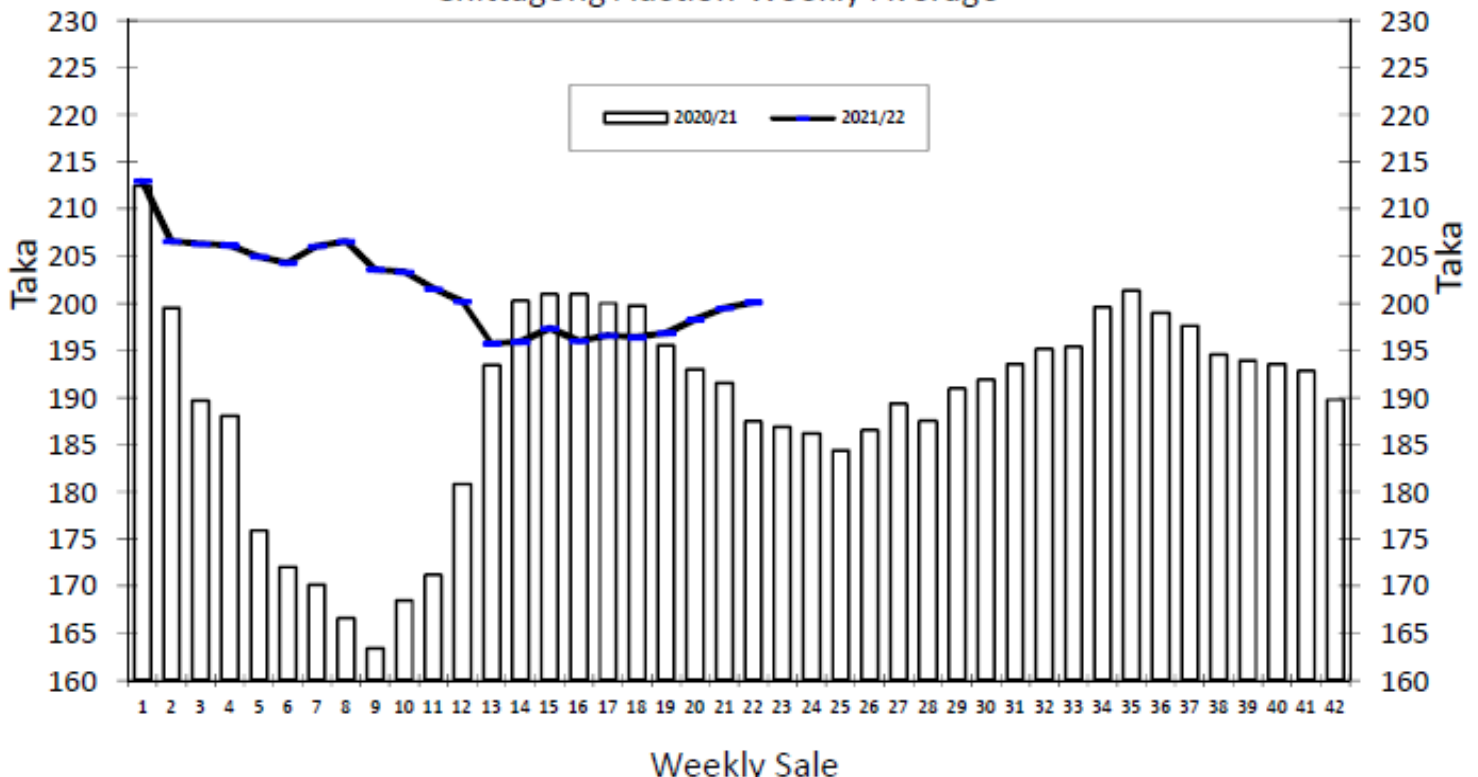
* Above price(s) realised in our catalogue

Offerings

Type	This Sale (Sale 23)				Next Sale (Sale 24)			
	Season 2021-2022		Season 2020-2021		Season 2021-2022		Season 2020-2021	
	Packages	Qty/Kg	Packages	Qty/Kg	Packages	Qty/Kg	Packages	Qty/Kg
Leaf	48,935	2,682,617	51,518	2,823,186	40,798	2,237,362	49,809	2,729,533
Dust	12,567	680,928	10,887	596,608	10,613	581,592	9,944	544,931
Total	61,502	3,363,544	62,405	3,419,794	51,411	2,818,955	59,753	3,274,464

Chittagong Auction Average: (Sale – 22)
Season 2021-22: Tk. 200.14 & Season 2020-21: Tk. 187.49

Chittagong Auction Weekly Average



Quantities of Teas Sold & Average Prices Realised

Category	For the Sale				Up-to-Date Sale							
	Season 2020/21		Season 2021/22		Season 2020/21		Season 2021/22			(+/-) Season 2020/21		
	Qty. (Kg)	Taka	Qty. (Kg)	Taka	Qty. (Kg)	(%)	Taka	Qty. (Kg)	(%)	Taka	Qty. (Kg)	Taka
CTC LEAF	1,658,014.7	181.63	2,431,272.0	197.83	32,906,881.5	78.5%	181.03	34,064,043.0	77.4%	197.02	1,157,161.5	15.99
CTC DUST	459,322.5	208.64	517,771.6	211.01	8,596,548.8	20.5%	210.70	9,642,433.1	21.9%	212.63	1,045,884.3	1.93
Sub-Total	2,117,337.2	187.49	2,949,043.6	200.14	41,503,430.3	99.0%	187.17	43,706,476.1	99.3%	200.46	2,203,045.8	13.29
Orthodox	1,495.0	120.00	0.0	0.00	2,002.0	0.0%	327.54	26,035.0	0.1%	101.48	24,033.0	-226.07
Total	2,118,832.2	187.44	2,949,043.6	200.14	41,505,432.3	99.0%	187.18	43,732,511.1	99.4%	200.40	2,227,078.8	13.22
Green Tea	0.0	0.00	57.0	1,519.30	4,943.2	0.0%	478.14	10,235.4	0.0%	449.80	5,292.2	-28.35
Yellow Tea	0.0	0.00	0.0	0.00	0.0	0.0%	0.00	20.0	0.0%	1,400.00	20.0	1,400.00
Total	2,118,832.2	187.44	2,949,100.6	200.17	41,510,375.5	99.0%	187.21	43,742,766.5	99.4%	200.46	2,232,391.0	13.25
Other (s)	5,892.4	138.09	0.0	0.00	405,284.6	99.8%	110.99	249,798.6	0.6%	163.91	-155,486.0	52.92
G.Total	2,124,724.6	187.30	2,949,100.6	200.17	41,915,660.1	100.0%	186.48	43,992,565.1	100%	200.25	2,076,905.0	13.78

Buyer Purchase Analysis

Buyer	For the Sale				Up-to-Date Sale							
	Season 2020/21		Season 2021/22		Season 2020/21		Season 2021/22			(+/-) Season 2020/21		
	Qty. (Kg)	Taka	Qty. (Kg)	Taka	Qty. (Kg)	(%)	Taka	Qty. (Kg)	(%)	Taka	Qty. (Kg)	Taka
Export	0.0	0.00	0.0	0.00	85,836.0	0.20%	194.56	21,946.0	0.0%	197.63	-63,890.0	3.08
Internal	2,124,724.6	187.30	2,949,100.6	200.17	41,829,824.1	99.80%	186.46	43,970,619.1	100.0%	200.26	2,140,795.0	13.79
Grand Total	2,124,724.6	187.30	2,949,100.6	200.17	41,915,660.1	100.00%	186.48	43,992,565.1	100.0%	200.25	2,076,905.0	13.78

Crop of Major Tea Producing & Exporting Countries

Country	Qty. (M.Kg)	For the Month				Up-to-Date			
		Month	2019	2020	2021 (+/-) 2020	2019	2020	2021 (+/-) 2020	
Bangladesh *	September	13.38	12.14	12.61	0.46	65.94	57.45	64.76	7.30
Sri Lanka	August	26.2	22.4	23.7	1.3	211.0	179.4	211.6	32.2
North India	August	157.5	143.0	153.2	10.2	684.4	534.9	631.9	97.0
South India	August	14.8	16.8	16.4	-0.4	137.0	135.9	160.6	24.7
All India	August	172.3	159.8	169.6	9.8	821.4	670.8	792.5	121.7
Kenya	June	42.4	46.0	43.0	-3.0	212.6	301.0	274.0	-27.0

* Source: Bangladesh Tea Board's Monthly Statistical Bulletin

OTHER MARKET(S)

COONOOR SALE 41-16TH OCTOBER, 2021

Fair demand at easier prices. The total CTC leaf teas sold this week was 71.72 % (1191491kgs) of the total offering of 1661400Kgs. Prices continued to fall across the category of teas (between Rs 3/5 and sometimes more) on offer with offtake from major Blenders being at larger percentage when compared to the other sections of the trade. The major blenders continued to be the mainstay and absorbed as much as 50.27% of the total CTC leaf sold quantity. Regional packateers were very choosy. Up country buyers and local traders were selective this week. Exporters operated this week selectively on the larger Broken and select Fannings.

MOMBASA SALE 41- 11TH /12TH & 13 OCTOBER, 2021

Improved and strong general demand for the 133,723 packages (8,741,823.00 kilos) on offer and prices closely followed quality with 14.43% remaining unsold

CTC QUOTATIONS	BP1 – USC	PF1 – USC	PD – USC	D1 - USC
Best	270 – 602	360 – 380	368 – 402	325 – 349
Good	250 – 366	356 – 378	369 – 398	335 – 346
Good Medium	255 – 296	304 – 376	340 – 378	325 – 348
Medium	260 – 274	250 – 309	258 – 280	235 – 293
Lower Medium	110 – 180	112 – 245	100 – 300	107 – 252
Plainer	104 – 161	104 – 213	084 – 172	082 – 182

KOLKATA/SILIGURI SALE 41: Sales have been dropped this week.