

# NATIONAL BROKERS LIMITED

<http://nationalbrokersbd.com/>

**Tea Auctioneers since 1948**

## TEA MARKET REPORT – Sale 22 held on Monday 11<sup>th</sup> October, 2021

**CTC LEAF:** 53,448 packages of Current Season teas on offer met with a good demand.

**BROKENS:** Well made good liquoring Brokens were a good market and mostly sold at around last levels. Their Mediums were a little easier following quality. Plain varieties were firm to slightly easier. BLF teas once again met with a good market and were fully firm.

**FANNINGS:** Good liquoring Fannings continued to be a good market and were about steady. Medium types met with a fairly good demand but were a little easier. Plain sorts once again were an easier market. BLF teas were a fairly good market at around last levels.

**CTC DUST:** 13,064 packages of Current Season and 1 package of Old Season tea on offer met with a good demand. Select best liquoring teas met with a good

competition and advanced by Tk.8/- to Tk.10/-. Other good and Medium varieties sold at around last with better, well made teas gaining Tk.2/- to Tk.4/- closely following quality. Plain and BLF Dusts were slightly easier and saw quite fair withdrawals. Blenders lent strong support with fair interest from the Loose tea buyers.

**COMMENTS:** Good liquoring teas continued to be well supported by all sections of the market. Blenders were once again the mainstay of the market with Loose tea buyers lending fairly good support. As a result, prices remained quite firm despite a large offerings in this sale. Good liquoring Dusts were the strong feature of the sale.

**Our catalogue ( Sale 22 ): Avg: Tk 203.50, Sold 81.9% & ( Sale 21 ) Avg: Tk 204.78, sold 82.9%.**

### Quotations – This Week – (In Taka)

Brokens	This Week	Last Week	Fannings	This week	Last Week	Dust	This week	Last Week
Large	180-195 nom	180-195 nom	Best	206-212	207-213	PD	176-259	180-241
Medium	192-203	192-203	Good	195-201	195-202	RD	168-270	174-278
Small	193-208	193-208	Medium	188-192	188-193	D	175-273	182-278
Plain	183-188	183-188	Plain	182-186	182-187	CD	170-340	187-361
BLF	160-180	155-180	BLF	160-180	155-180	BLF	168-182	174-182

Exchange Rates 11<sup>th</sup> October, 2021 Sterling Pound: Tk. 114.2266 dollar: Tk. 84.3678

Top Prices – This Week

Category – CTC	Garden	Grade	Package	Price	Buyer(s)
Brokens	* Madhupur	GBOP(S)	20	265/-	AKT/Taj
Fannings	Madhupur	PF	10	255/-	AKT
Clonal Brokens	Kaiyacherra Dalu	GBOP	10	280/-	Mustaq
Clonal Fannings	Kaiyacherra Dalu	OF	11	285/-	AKT
PD/RD Incl. Clone	* Madhupur	RD	10	270/-	Meghna
D Incl. Clone	* Daragaon	D	20	273/-	TS/Rajdhani
CD Incl. Clone	* Madhupur	CD(BT1)	10	340/-	Kamona

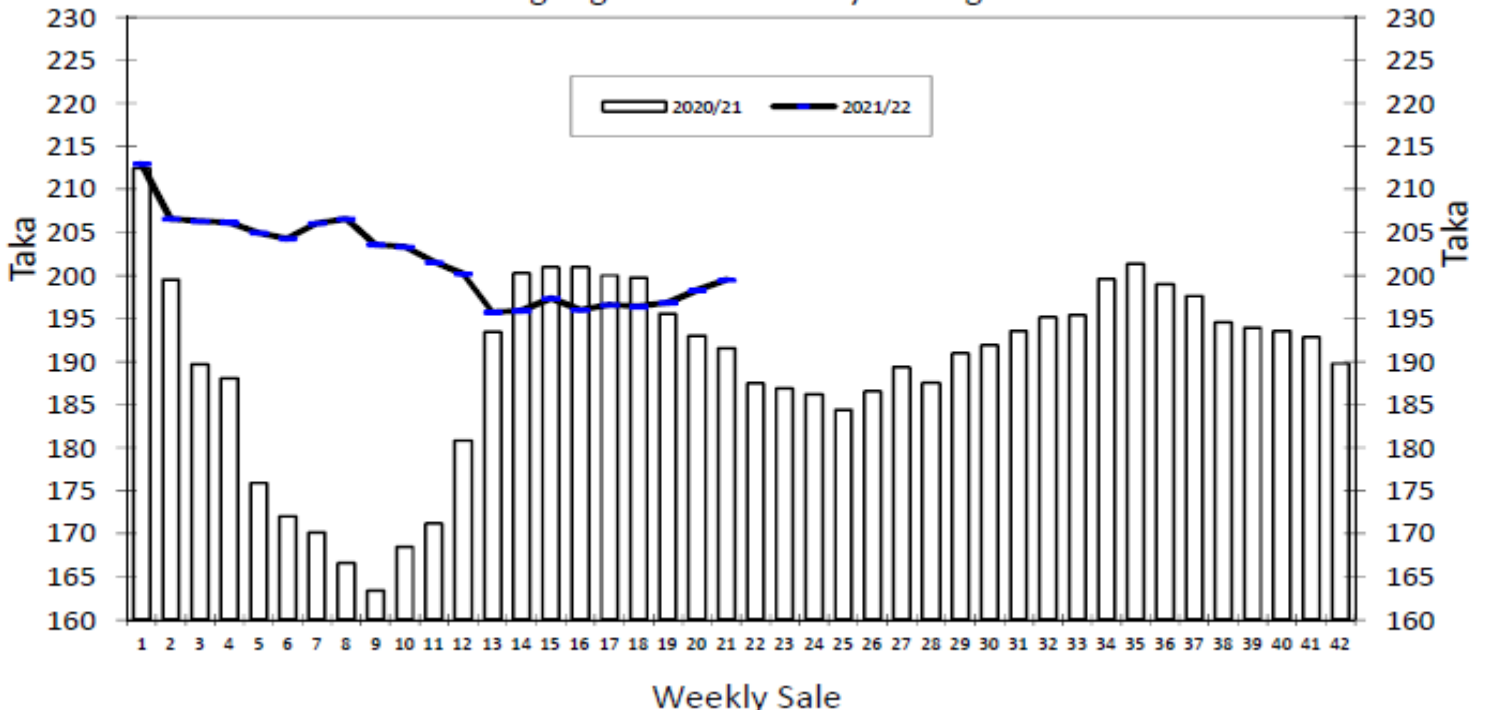
\* Above price(s) realised in our catalogue

### Offerings

	This Sale ( Sale 22 )				Next Sale ( Sale 23 )			
	Season 2021-2022		Season 2020-2021		Season 2021-2022		Season 2020-2021	
Type	Packages	Qty/Kg	Packages	Qty/Kg	Packages	Qty/Kg	Packages	Qty/Kg
Leaf	53,449	2,930,074	49,334	2,703,503	48,965	2,685,241	51,518	2,823,186
Dust	13,064	707,522	10,708	586,798	12,569	688,781	10,887	596,608
Total	66,513	3,637,596	60,042	3,290,302	61,534	3,374,022	62,405	3,419,794

Chittagong Auction Average: ( Sale – 21 )  
Season 2021-22: Tk. 191.61 & Season 2020-21: Tk. 199.48

### Chittagong Auction Weekly Average



## Quantities of Teas Sold &amp; Average Prices Realised

Category	For the Sale				Up-to-Date Sale							
	Season 2020/21		Season 2021/22		Season 2020/21		Season 2021/22		(+/-) Season 2020/21			
	Qty. (Kg)	Taka	Qty. (Kg)	Taka	Qty. (Kg)	(%)	Taka	Qty. (Kg)	(%)	Taka	Qty. (Kg)	Taka
CTC LEAF	1,552,292.3	186.14	2,298,560.4	197.27	31,248,866.8	78.5%	180.99	31,632,771.0	77.1%	196.95	383,904.2	15.96
CTC DUST	441,407.6	210.85	499,466.7	209.69	8,137,776.3	20.5%	210.82	9,124,661.5	22.2%	212.72	986,885.2	1.90
Sub-Total	1,993,699.9	191.61	2,798,027.1	199.48	39,386,643.1	99.0%	187.16	40,757,432.5	99.3%	200.48	1,370,789.4	13.33
Orthodox	89.5	1,200.00	0.0	0.00	507.0	0.0%	939.54	26,035.0	0.1%	101.48	25,528.0	-838.06
Total	1,993,789.4	191.65	2,798,027.1	199.48	39,387,150.1	99.0%	187.17	40,783,467.5	99.4%	200.42	1,396,317.4	13.26
Green Tea	1,555.5	527.70	27.5	1,894.55	3,446.2	0.0%	477.34	10,178.4	0.0%	443.81	6,732.2	-33.53
Yellow Tea	0.0	0.00	0.0	0.00	0.0	0.0%	0.00	20.0	0.0%	1,400.00	20.0	1,400.00
Total	1,995,344.9	191.92	2,798,054.6	199.50	39,390,596.3	99.0%	187.19	40,793,665.9	99.4%	200.48	1,403,069.6	13.29
Other (s)	0.0	0.00	0.0	0.00	399,392.2	99.8%	110.59	249,798.6	0.6%	163.91	-149,593.6	53.32
G.Total	1,995,344.9	191.92	2,798,054.6	199.50	39,789,988.5	100.0%	186.42	41,043,464.5	100%	200.26	1,253,476.0	13.84

## Buyer Purchase Analysis

Buyer	For the Sale				Up-to-Date Sale							
	Season 2020/21		Season 2021/22		Season 2020/21		Season 2021/22		(+/-) Season 2020/21			
	Qty. (Kg)	Taka	Qty. (Kg)	Taka	Qty. (Kg)	(%)	Taka	Qty. (Kg)	(%)	Taka	Qty. (Kg)	Taka
Export	0.0	0.00	0.0	0.00	85,836.0	0.22%	194.56	21,946.0	0.1%	197.63	-63,890.0	3.08
Internal	1,995,344.9	191.92	2,798,054.6	199.50	39,704,152.5	99.78%	186.41	41,021,518.5	99.9%	200.26	1,317,366.0	13.86
Grand Total	1,995,344.9	191.92	2,798,054.6	199.50	39,789,988.5	100.00%	186.42	41,043,464.5	100.0%	200.26	1,253,476.0	13.84

## Crop of Major Tea Producing &amp; Exporting Countries

Country	Month	For the Month			Up-to-Date		
		2020	2021	(+/-) 2020	2020	2021	(+/-) 2020
Bangladesh *	August	11.32	14.39	3.07	45.31	52.15	6.84
Sri Lanka	August	22.4	23.7	1.3	179.4	211.6	32.2
North India	August	143.0	153.2	10.2	534.9	631.9	97.0
South India	August	16.8	16.4	-0.4	135.9	160.6	24.7
All India	August	159.8	169.6	9.8	670.8	792.5	121.7
Kenya	June	46.0	43.0	-3.0	301.0	274.0	-27.0

\* Source: Bangladesh Tea Board's Monthly Statistical Bulletin

## OTHER MARKET(S)

**KOLKATA SALE 40- 5<sup>TH</sup> /7<sup>TH</sup> & 8<sup>TH</sup> OCTOBER, 2021**

There was good demand. Brighter liquoring Assams sold at irregular levels around last with better descriptions gaining with competition. Well-made, medium sorts were steady; the remainder was easier to barely steady. Better and well-made medium Doors were around last levels. Plainer and BLF sorts were irregular and easier. Export accounts showed some interest on larger Brokens. Local buyers were active on the Doors.

Tea Category USC/KG	Brokens	Fannings	Dusts
BEST ASSAMS	426-479	399-439	426-453
GOOD ASSAMS	373-413	333-373	333-399
MED ASSAMS	213-293	213-280	200-293
BEST DOORS	346-359	333-346	NA
GOOD DOORS	240-306	240-306	213-226
MED & PLAINER DOORS	146-200	146-200	146-186

**SILIGURI SALE 40- 5<sup>TH</sup> OCTOBER, 2021**

LEAF & DUST: Fair demand which improved with the progress of the sale. Levels for select best sorts were steady while the remainder tended irregular and easier. Plainer sorts were around last. Buying Pattern: Internal-Operated selectively. Blenders-HUL/TCPL were active.

Quotations (USC/KG)	Brokens(USC/kg)	Fannings(USC/kg)	Dust (USC/kg)
GOOD / BEST	306-413	306-373	253-306
MEDIUM/ BETTER MEDIUM	186-293	186-293	173-246
COMMON / BLF	133-180	140-180	133-166

**COONOOR SALE 40- 8<sup>TH</sup> OCTOBER, 2021**

Improved demand at easier prices. The total CTC leaf teas sold this week was **68.03 % (1181960kgs)** of the total offering of **1737306Kgs**. Best and good liquoring larger Brokens sold at irregular prices with select lines sold at firm to dearer rates however, all other sorts declined hugely across the teas on offer. Up country buyers and local traders were selective this week. Exporters operated this week selectively on the larger Brokens and select Fannings.

CTC Leaf(USC/KG)	Best	Good	Better Medium	Medium	Plain
Larger Brokens	153-228	117-140	113-116	104-112	98-102
Medium Brokens	161-213	126-160	120-125	106-118	100-105
Smaller Brokens	158-269	128-157	120-126	104-118	98-102
Fannings	160-182	125-158	117-124	104-116	96-102

**MOMBASA SALE 40- 4<sup>TH</sup> /5<sup>TH</sup> & 6<sup>TH</sup> OCTOBER, 2021**

There was good general demand for the 127,099 packages (8,316,318.50 kilos) available in the market with prices closely following quality. 19.79% were unsold.

CTC QUOTATIONS	BP1 – USC	PF1 – USC	PD – USC	D1 - USC
Best	259 – 590	341 – 366	360 – 382	315 – 351
Good	259 – 334	330 – 364	350 – 378	326 – 340
Good Medium	246 – 290	296 – 362	348 – 374	320 – 340
Medium	260 – 278	250 – 284	258 – 302	235 – 282
Lower Medium	116 – 170	114 – 242	106 – 298	104 – 232
Plainer	104 – 164	080 – 202	085 – 174	080 – 162