

NATIONAL BROKERS LIMITED

<http://nationalbrokersbd.com/>

Tea Auctioneers since 1948

TEA MARKET REPORT – Sale 04 held on Monday 31st May, 2021

CTC LEAF: 23,880 packages of Current Season & 700 packages of Old Season teas on offer met with a slightly better demand.

BROKENS: A few well made clean liquoring Brokens were in good demand and sold well following quality. However, Mediums met with fair interest and sold at slightly easier rates declining by Tk. 2/- to Tk.3/- per kg. Plain and BLF met with only a fair demand at lower rates and there were fair withdrawals.

FANNINGS: A small weight of coloury Fannings were well competed for and were generally firm to a touch dearer. Mediums saw fair demand but were a little easier. Plain and BLF teas saw some interest but were steady with some withdrawals.

CTC DUST: 6,632 packages of Current Season & 150 packages of Old Season teas on offer met with a strong

demand. Good liquoring Dusts met with good competition and were fully firm to slightly dearer. Others also sold well at around last levels. Plain/BLF Dusts saw some interest and were about steady with fair withdrawals. Blenders lent strong support with fair interest from the Loose tea buyers.

COMMENTS: Quality in general was on the plainer side. However, a few bright teas attracted fairly strong competition and sold quite well in line with quality. Blenders lent fair support whilst there was some interest from the Loose tea buyers. Dusts sold well.

Our catalogue (Sale 04): Avg: Tk 214.13, Sold 75.8% & (Sale 03) Avg: Tk 212.78, sold 75.6%.

Quotations – This Week – (In Taka)

Brokens	This Week	Last Week	Fannings	This week	Last Week	Dust	This week	Last Week
Large	195-200 nom	195-199 nom	Best	207-212	205-210	PD	206-234	205-232
Medium	195-200	197-202	Good	202-205	200-203	RD	175-277	170-258
Small	196-202	198-205	Medium	192-198	190-197	D	195-286	200-279
Plain	180-185	180-185	Plain	180-185	180-185	CD	200-350	190-292
BLF	170-177	165-175	BLF	170-177	165-175	BLF	175-215	170-212

Exchange Rates 31th May, 2021 Sterling Pound: Tk. 117.9091, dollar: Tk. 83.6702

Top Prices – This Week

Category – CTC	Garden	Grade	Package	Price	Buyer(s)
Brokens	* Madhupur	GBOP	10	257/-	AKT
Fannings	* Madhupur /Ghazipore	PF/OF	30/10	247/-	Ispahani/AKT/Aftab/Padma
Clonal Brokens	Kaiyacherra Dalu	GBOP	10	308/-	AKT
Clonal Fannings	Kaiyacherra Dalu	OF	10	277/-	Ali
PD/RD Incl. Clone	Madhupur	RD(BT1)	10	293/-	AKT
D	Madhupur	D(BT1)	10	295/-	Shawon
CD	* Madhupur	CD(BT1)	10	350/-	Kamona

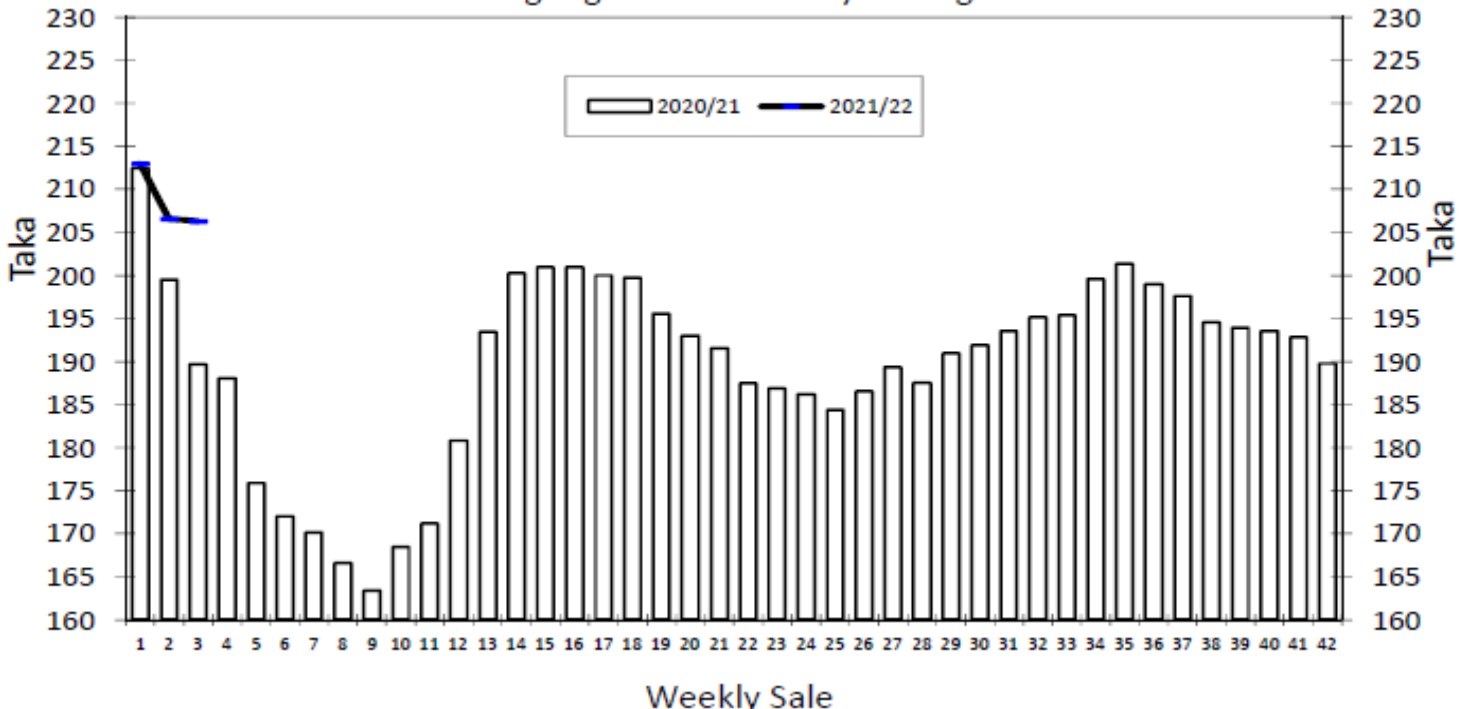
* Above price(s) realised in our catalogue

Offerings

Type	This Sale (Sale 04)				Next Sale (Sale 05)			
	Season 2021-2022		Season 2020-2021		Season 2021-2022		Season 2020-2021	
	Packages	Qty/Kg	Packages	Qty/Kg	Packages	Qty/Kg	Packages	Qty/Kg
Leaf	24,580	1,310,001	39,272	2,153,684	24,948	1,368,148	47,630	2,595,448
Dust	6,782	365,089	8,617	473,177	6,451	353,515	9,113	500,612
Total	31,362	1,675,090	47,889	2,626,860	31,399	1,721,663	56,743	3,096,060

Chittagong Auction Average: (Upto Sale – 03)
Season 2021-22: Tk. 206.33 & Season 2020-21: Tk. 189.73

Chittagong Auction Weekly Average



Quantities of Teas Sold & Average Prices Realised

Category	For the Sale				Up-to-Date Sale							
	Season 2020/21		Season 2021/22		Season 2020/21		Season 2021/22		(+/-) Season 2020/21			
	Qty. (Kg)	Taka	Qty. (Kg)	Taka	Qty. (Kg)	(%)	Taka	Qty. (Kg)	(%)	Taka	Qty. (Kg)	Taka
CTC LEAF	1,076,693.0	186.12	776,380.7	198.53	2,484,071.0	81.3%	195.70	2,296,009.2	70.7%	201.91	-188,061.8	6.20
CTC DUST	207,952.0	208.43	302,850.9	226.31	454,538.2	14.9%	213.32	792,070.2	24.4%	227.51	337,532.0	14.19
Sub-Total	1,284,645.0	189.73	1,079,231.6	206.33	2,938,609.2	96.2%	198.43	3,088,079.4	95.1%	208.47	149,470.2	10.04
ORTHODOX	0.0	0.00	0.0	0.00	0.0	0.0%	0.00	17,065.0	0.5%	102.26	17,065.0	102.26
Total	1,284,645.0	189.73	1,079,231.6	206.33	2,938,609.2	96.2%	212.46	3,105,144.4	95.6%	207.89	166,535.2	-4.57
GREEN TEA	0.0	0.00	0.0	0.00	0.0	0.0%	0.00	19.4	0.0%	936.65	19.4	936.65
Total	1,284,645.0	189.73	1,079,231.6	206.33	2,938,609.2	96.2%	212.46	3,105,163.8	95.6%	207.89	166,554.6	-4.57
Other (s)	87,583.5	103.65	42,248.2	173.50	117,347.1	99.4%	105.29	141,313.3	100.0%	168.07	23,966.2	62.78
G.Total	1,372,228.5	184.24	1,121,479.8	205.09	3,055,956.3	100.0%	194.85	3,246,477.1	100%	206.16	190,520.8	11.31

Buyer Purchase Analysis

Buyer	For the Sale				Up-to-Date Sale							
	Season 2020/21		Season 2021/22		Season 2020/21		Season 2021/22		(+/-) Season 2020/21			
	Qty. (Kg)	Taka	Qty. (Kg)	Taka	Qty. (Kg)	(%)	Taka	Qty. (Kg)	(%)	Taka	Qty. (Kg)	Taka
Export	0.0	0.00	0.0	0.00	17,565.9	0.57%	213.00	0.0	0.0%	0.00	-17,565.9	-213.00
Internal	1,372,228.5	184.24	1,121,479.8	205.09	3,038,390.4	99.43%	194.75	3,246,477.1	100.0%	206.16	208,086.7	11.41
Grand Total	1,372,228.5	184.24	1,121,479.8	205.09	3,055,956.3	100.00%	194.85	3,246,477.1	100.0%	206.16	190,520.8	11.31

Crop of Major Tea Producing & Exporting Countries

Country	Qty. (M.Kg)	Month	For the Month			Up-to-Date		
			2020	2021	(+/-) 2020	2020	2021	(+/-) 2020
Bangladesh *		April	2.37	3.93	1.57	4.19	5.92	1.73
North India		April	23.8	51.4	27.6	57.6	100.5	42.9
South India		April	39.1	73.4	34.3	113.5	173.3	59.8
All India		April	62.9	124.8	61.9	171.1	273.8	102.7
Kenya		March	54.9	48.7	-6.2	158.6	141.0	-17.6
Sri Lanka		March	13.5	28.4	14.9	53.6	74.0	20.4

* Source: Bangladesh Tea Board's Monthly Statistical Bulletin

* K. S. Broker's Sale 03 Data was not available due to their technical issues. Will be updated in next report once received.

General + Other Market(s) This/Last Week

SILIGURI SALE 21- 27TH MAY, 2021

LEAF & DUST: Good demand. Levels for all categories were firm to dearer with quality & competition. Buying Pattern: All section operated.

Quotations (USC/KG)	Brokens(USC/kg)	Fannings(USC/kg)	Dust (USC/kg)
GOOD / BEST	387-490	373-463	324-407
MEDIUM / BETTER MEDIUM	304-373	290-359	255-311
COMMON / BLF	235-297	235-283	228-249

KOLKATA SALE 21

Kolkata Sale No.21 which was scheduled to be held on 25th May will now be held on Wednesday 2nd June 2021 in view of the lockdown.

COONOOR SALE 21

Coonoor Sale 21 has been postponed to 3rd & 4th June, 2021 due to lockdown.

MOMBASA SALE 21- 24TH /25TH & 26TH MAY, 2021

There was good general demand for the 193,240 packages (12,804,306.50 kilos). 8.02% remained unsold.

CTC QUOTATIONS	BP1 – USC	PF1 – USC	PD – USC	D1 - USC
Best	218 – 560	217 – 292	220 – 304	180 – 258
Good	198 – 318	215 – 238	218 – 246	176 – 220
Good Medium	190 – 268	210 – 229	214 – 229	178 – 212
Medium	174 – 218	170 – 216	174 – 212	156 – 194
Lower Medium	124 – 187	120 – 194	102 – 240	104 – 212
Plainer	090 – 176	080 – 182	092 – 194	074 – 175