

NATIONAL BROKERS LIMITED

<http://nationalbrokersbd.com/>

Tea Auctioneers since 1948

TEA MARKET REPORT – Sale 20 held on Monday, 12th October, 2020

CTC LEAF: 46,854 packages of Current Season teas on offer met with a selective demand at easier rates.

BROKENS: Well made good liquoring BOPs met with a fair demand but eased further by Tk.5/-. Their GBOPs met with a fairly good demand but were a lower market and were mostly easier by Tk.3/- to Tk.5/-. Mediums eased further. All others were an easier market with fair withdrawals particularly for plain and BLF teas which witnessed heavier withdrawals.

FANNINGS: Well made good liquoring Fannings met with less demand at easier rates. Mediums followed a similar trend and often eased by Tk.5/- and more with fair withdrawals. Plain and BLF teas were difficult of sale.

CTC DUST: 9,791 packages of Current Season teas on offer met with a good demand. Good liquoring Ds and

CDs met with a good competition and advanced by Tk.8/- to Tk.10/-. Others also sold well at around last levels. However, Plain and BLF teas were a very selective market with fair withdrawals. Blenders lent strong support with fair interest from the Loose tea buyers.

COMMENTS: The market this week again witnessed less demand with prices easing further. However, better liquoring sorts were more readily absorbed. Plainer varieties continued to be difficult of sale with very heavy withdrawals. There was a little more activity from the Blenders but Loose tea buyers remained very selective.

Dusts sold well.

Our catalogue (Sale 20): Avg: Tk 199.02, Sold 69.6% & (Sale 19) Avg: Tk 203.23, sold 67.0%.

Quotations – This Week – (In Taka)

Brokens	This Week	Last Week	Fannings	This week	Last Week	Dust	This week	Last Week
Large	NQTA	NQTA	Best	202-207	207-212	PD	182-270	153-257
Medium	170-185	175-190	Good	190-200	195-205	RD	171-265	175-268
Small	180-205	185-210	Medium	173-180	175-185	D	170-285	178-285
Plain	155-165	160-170	Plain	155-165	160-170	CD	192-309	180-309
BLF	160-170 nom	160-170 nom	BLF	165-170 nom	165-170 nom	BLF	181-195	185-195

Exchange Rates 12th October, 2020 Sterling Pound: Tk. 108.1474 dollar: Tk. 83.6702

Top Prices – This Week

Category – CTC	Garden	Grade	Package	Price	Buyer(s)
Brokens	* Madhupur	GBOP	20	264/-	Rose/AKT
Fannings	Madhupur	PF	20	265/-	TS/Danish
Clonal Brokens	* Madhupur	GBOP(BT1)	20	275/-	AKT
Clonal Fannings	Madhupur	PF(TV1)	20	275/-	Magnolia
PD/RD	Madhupur	RD(BT1)	10	285/-	MA
D	* Daragaon	D	20	252/-	AKT
CD	* Madhupur	CD(BT1)	10	352/-	Kamona

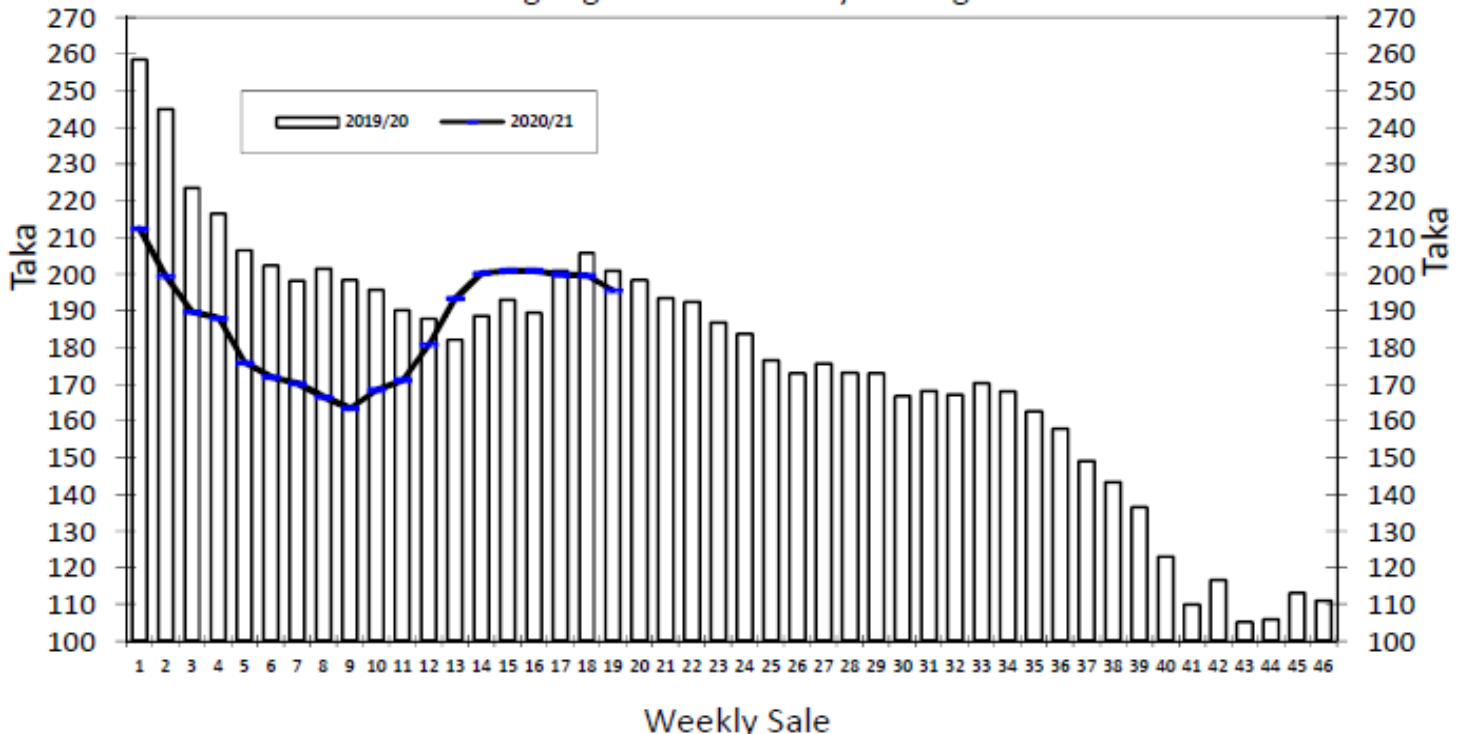
* Above price(s) realised in our catalogue

Offerings

Type	This Sale (Sale 20)				Next Sale (Sale 21)			
	Season 2020-2021		Season 2019-2020		Season 2020-2021		Season 2019-2020	
	Packages	Qty/Kg	Packages	Qty/Kg	Packages	Qty/Kg	Packages	Qty/Kg
Leaf	46,854	2,567,599	43,181	2,367,378	44,428	2,436,432	65,978	3,617,604
Dust	9,791	536,547	8,010	439,763	10,430	571,564	11,800	648,355
Total	56,645	3,104,146	51,191	2,807,141	54,858	3,007,996	77,778	4,265,958

Chittagong Auction Average: Sale 19
Season 2020/21: Tk. 195.54 & Season 2019/20: Tk. 200.90

Chittagong Auction Weekly Average



Chittagong Auction Statistics - Sale: 19

Quantities of Teas Sold & Average Prices Realised

Category	For the Sale				Up-to-Date Sale							
	Season 2019/20		Season 2020/21		Season 2019/20		Season 2020/21		Season 2019/20		(+/-) Season 2019/20	
	Qty. (Kg)	Taka	Qty. (Kg)	Taka	Qty. (Kg)	(%)	Taka	Qty. (Kg)	(%)	Taka	Qty. (Kg)	Taka
CTC LEAF	2,231,290.5	200.32	1,458,152.0	190.73	29,489,331.5	81.1%	199.16	28,158,147.2	78.6%	180.35	-1,331,184.3	-18.80
CTC DUST	500,042.0	203.49	440,430.0	211.47	6,571,044.1	18.1%	207.93	7,274,516.5	20.3%	210.69	703,472.4	2.76
Sub-Total	2,731,332.5	200.90	1,898,582.0	195.54	36,060,375.6	99.1%	200.75	35,432,663.7	98.9%	186.58	-627,711.9	-14.18
ORTHODOX	0.0	0.00	0.0	0.00	297.5	0.0%	236.77	417.5	0.0%	883.70	120.0	646.93
Total	2,731,332.5	200.90	1,898,582.0	195.54	36,060,673.1	99.1%	200.76	35,433,081.2	98.9%	186.59	-627,591.9	-14.17
GREEN TEA	0.0	0.00	58.5	1,083.33	3,125.5	0.01%	400.00	1,890.7	0.0%	435.90	-1,234.8	35.90
Total	2,731,332.5	200.90	1,898,640.5	195.57	36,063,798.6	99.1%	200.77	35,434,971.9	98.9%	186.60	-628,826.7	-14.17
Other (s)	0.0	0.00	992.0	186.17	309,390.4	0.9%	74.77	399,392.2	99.8%	110.59	90,001.8	35.82
G.Total	2,731,332.5	200.90	1,899,632.5	195.56	36,373,189.0	100.0%	199.70	35,834,364.1	100%	185.75	-538,824.9	-13.95

Buyer Purchase Analysis

Buyer	For the Sale				Up-to-Date Sale							
	Season 2019/20		Season 2020/21		Season 2019/20		Season 2020/21		Season 2019/20		(+/-) Season 2019/20	
	Qty. (Kg)	Taka	Qty. (Kg)	Taka	Qty. (Kg)	(%)	Taka	Qty. (Kg)	(%)	Taka	Qty. (Kg)	Taka
Export	0.0	0.00	13,996.5	192.02	8,778.2	0.03%	239.44	85,836.0	0.2%	194.56	77,057.8	-44.89
Internal	2,731,332.5	200.90	1,885,636.0	195.59	36,364,410.8	99.97%	199.69	35,748,528.1	99.8%	185.73	-615,882.7	-13.96
Grand Total	2,731,332.5	200.90	1,899,632.5	195.56	36,373,189.0	100.00%	199.70	35,834,364.1	100.0%	185.75	-538,824.9	-13.95

Crop of Major Tea Producing & Exporting Countries

Country	Month	For the Month			Up-to-Date		
		2019	2020	(+/-) 2019	2019	2020	(+/-) 2019
Bangladesh *	August	13.51	11.32	-2.18	52.56	45.30	-7.3
Sri Lanka	August	26.2	22.4	-3.8	211.0	179.2	-31.8
North India	August	157.5	142.9	-14.6	684.4	533.5	-150.9
South India	August	14.8	16.8	2.0	137.0	135.5	-1.5
All India	August	172.3	159.7	-12.6	821.4	669.0	-152.4
Kenya	August	37.2	38.5	1.3	281.0	377.0	96.0

Other Market(s)

KOLKATA SALE 40- 6TH /7TH & 8TH OCTOBER, 2020

CTC: This week saw a general decline in levels for all Assam and Dooars categories. Limited interest from major Blenders and Export accounts led to easing off of levels for best and good liquoring Assams; medium sorts were discounted as well. M/s Tata Consumer Products showed fair interest on good and medium Assams in the leaf market. They were silent on the Dooars. M/s Hindustan Unilever operated on Assams in both the Leaf and Dust sales. Export accounts were very selective on larger Brokens. Local buyers operated on the Dooars.

Tea Category USC/KG	Brokens	Fannings	Dusts
BEST ASSAMS	425-466	411-439	425-452
GOOD ASSAMS	384-411	370-384	370-398
MED ASSAMS	329-357	329-343	329-357
BEST DOOARS	343-370	343-357	329-343
GOOD DOOARS	322-336	315-329	302-315
MED & PLAINER DOOARS	288-309	288-302	288-295

COONOOR SALE 41- 9TH & 10TH OCTOBER 2020

Continued improved demand at easier prices. The total CTC leaf teas sold this week was 88.75 % (1644423 kgs) of the total offering of 208478 Kgs. Prices continued to fall across the category of teas (between Rs 8/- to 12/- and sometimes more) on offer with offtake from all sections of the trade continuing to improve. The major Blenders were once again the mainstay of the market. The upcountry packateers were rather choosy. Internal and the local traders improved their purchases at easier prices. Exporters operated selectively on the bolder and the medium Brokens.

CTC Leaf(USC/KG)	Best	Good	Better Medium	Medium	Plain
Larger Brokens	221-240	205-220	192-203	179-191	165-177
Medium Brokens	220-289	206-218	194-205	184-192	165-183
Smaller Brokens	248-287	214-246	202-213	189-200	174-188
Fannings	244-284	221-242	203-220	191-202	172-189

SILIGURI SALE 40- 7TH OCTOBER, 2020

Weak Demand with heavy withdrawals. Levels quoted were much below last week.

Quotations (USC/KG)	Brokens(USC/kg)	Fannings(USC/kg)	Dust (USC/kg)
GOOD / BEST	343-384	336-377	315-343
MEDIUM / BETTER MEDIUM	302-336	295-329	288-309
COMMON / BLF	268-295	268-288	261-281

MOMBASA SALE 40- 5TH & 6TH OCTOBER, 2020

There was good general demand for the 131,300 packages (8,685,718.50 kilos) on offer and 16.10% were unsold.

CTC QUOTATIONS	BP1 – USC	PF1 – USC	PDUST – USC	DUST1 - USC
Best	233 – 488	222 – 336	314 – 322	212 – 298
Good	210 – 326	220 – 260	314 – 324	184 – 269
Good Medium	222 – 308	200 – 238	308 – 324	190 – 264
Medium	210 – 242	186 – 208	188 – 224	135 – 224
Lower Medium	138 – 200	128 – 192	130 – 210	137 – 210
Plainer	136 – 166	100 – 164	105 – 182	111 – 178