

# NATIONAL BROKERS LIMITED

<http://nationalbrokersbd.com/>

**Tea Auctioneers since 1948**

## TEA MARKET REPORT – Sale 14 held on Monday, 31<sup>st</sup> August, 2020

CTC LEAF: 48,828 packages of Current Season teas on offer continued to meet with a strong demand at dearer rates.

BROKENS: Well made good liquoring BOPs met with a good demand at firm to slightly dearer rates. Their GBOPs were again a strong feature of the market and prices advanced further often by upto Tk.10/- and more. Their Medium and plain varieties were also a strong market and were dearer following competition. There was some withdrawals.

FANNINGS: Well made good liquoring Fannings were again a strong market and were mostly dearer by Tk.5/- and more. Their Mediums continued to be a good market and were also dearer. Plain varieties met with a fairly good market but there were some withdrawals in this category.

CTC DUST: 11,723 packages of Current Season teas on offer met with quite a good demand. Good liquoring Dusts particularly CDs were an easier market and sold at a drop of Tk.10/- to Tk.15/- closely following quality. However, their Medium and plainer varieties which include BLF, met with a good support and sold at steady rates with less withdrawals. Blenders lent strong support with fair interest from the Loose tea buyers.

COMMENTS: Once again the market witnessed a strong demand with improved liquoring sorts advancing further. Major Blenders continued to lend quite useful support with Loose tea buyers continuing to operate quite actively.

Dusts were an easier market.

**Our catalogue (Sale 14): Avg: Tk 201.02, Sold 84.4% & (Sale 13) Avg: Tk 191.45, sold 90.4%.**

### Quotations – This Week – (In Taka)

Brokens	This Week	Last Week	Fannings	This week	Last Week	Dust	This week	Last Week
Large	175-195	175-195	Best	215-220	210-215	PD	192-240	163-243
Medium	180-210	175-205	Good	200-210	195-205	RD	158-313	140-300
Small	185-220	185-215	Medium	180-190	165-180	D	164-293	179-257
Plain	160-175	140-160	Plain	160-175	135-155	CD	228-348	134-323
BLF	160-180	140-170	BLF	160-180	140-165	BLF	174-210	134-228

Exchange Rates 31<sup>st</sup> August, 2020 Sterling Pound: Tk. 110.8105, dollar: Tk. 83.6702

### Top Prices – This Week

Category – CTC	Garden	Grade	Package	Price	Buyer(s)
Brokens	Baramasia	GBOP	10	290/-	Sharif
Fannings	Rangapani a/c Ellahinoor	GOF	10	261/-	BC
Clonal Brokens	Kaiyacherra Dalu	GBOP	10	333/-	AKT
Clonal Fannings	Kaiyacherra Dalu	OF	10	300/-	Sharif/Ali
PD/RD	* Madhupur	RD(BT1)	10	313/-	Shawon
D	* Madhupur	D(BT1)	20	293/-	MA/AKT
CD	* Madhupur	CD(BT1)	10	348/-	Shawon

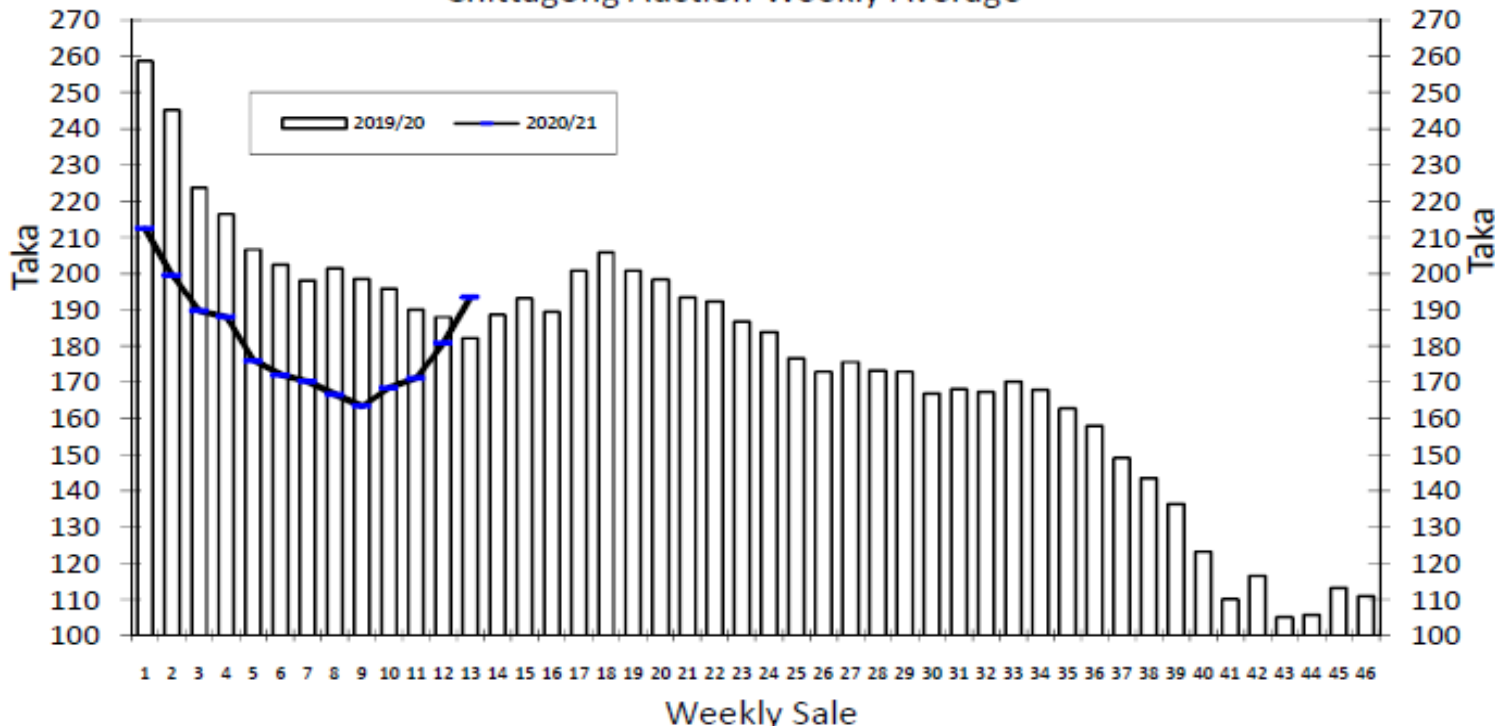
\* Above price(s) realised in our catalogue

### Offerings

Type	This Sale ( Sale 14 )				Next Sale ( Sale 15 )			
	Season 2020-2021		Season 2019-2020		Season 2020-2021		Season 2019-2020	
	Packages	Qty/Kg	Packages	Qty/Kg	Packages	Qty/Kg	Packages	Qty/Kg
Leaf	48,828	2,675,774	56,232	3,081,335	43,084	2,362,727	64,966	3,559,993
Dust	11,723	642,420	10,474	575,420	11,802	646,750	10,965	602,376
Total	60,551	3,318,195	66,706	3,656,755	54,886	3,009,476	75,931	4,162,369

Chittagong Auction Average: Sale 13  
Season 2020/21: Tk. 193.46 & Season 2019/20: Tk. 182.09

### Chittagong Auction Weekly Average



**Chittagong Auction Statistics - Sale: 13**  
Quantities of Teas Sold & Average Prices Realised

Category	For the Sale				Up-to-Date Sale							
	Season 2019/20		Season 2020/21		Season 2019/20		Season 2020/21		(+/-) Season 2019/20			
	Qty. (Kg)	Taka	Qty. (Kg)	Taka	Qty. (Kg)	(%)	Taka	Qty. (Kg)	(%)	Taka	Qty. (Kg)	Taka
CTC LEAF	1,305,879.2	180.92	2,195,784.6	186.76	15,726,211.3	79.8%	202.04	17,946,602.2	79.5%	172.07	2,220,390.9	-29.97
CTC DUST	338,990.1	186.60	423,102.3	228.23	3,826,906.9	19.4%	211.79	4,230,530.0	18.8%	207.01	403,623.1	-4.78
Sub-Total	1,644,869.3	182.09	2,618,886.9	193.46	19,553,118.2	99.3%	203.95	22,177,132.2	98.3%	178.74	2,624,014.0	-25.21
ORTHODOX	0.0	0.00	49.0	1,100.00	297.5	0.0%	236.77	348.0	0.0%	760.62	50.5	523.84
Total	1,644,869.3	182.09	2,618,935.9	193.47	19,553,415.7	99.3%	203.95	22,177,480.2	98.3%	178.75	2,624,064.5	-25.20
GREEN TEA	0.0	0.00	19.5	900.00	0.0	0.00%	0.00	1,773.7	0.0%	402.54	1,773.7	402.54
Total	1,644,869.3	182.09	2,618,955.4	193.48	19,553,415.7	99.3%	203.95	22,179,253.9	98.3%	178.77	2,625,838.2	-25.19
Other (s)	91,085.7	63.60	2,293.0	220.42	144,517.4	0.7%	78.38	383,337.4	99.7%	108.47	238,820.0	30.09
G.Total	1,735,955.0	175.87	2,621,248.4	193.50	19,697,933.1	100.0%	203.03	22,562,591.3	100%	177.57	2,864,658.2	-25.46

**Buyer Purchase Analysis**

Buyer	For the Sale				Up-to-Date Sale							
	Season 2019/20		Season 2020/21		Season 2019/20		Season 2020/21		(+/-) Season 2019/20			
	Qty. (Kg)	Taka	Qty. (Kg)	Taka	Qty. (Kg)	(%)	Taka	Qty. (Kg)	(%)	Taka	Qty. (Kg)	Taka
Export	0.0	0.00	8,211.0	172.07	7,132.7	0.03%	247.23	63,877.3	0.3%	193.18	56,744.6	-54.05
Internal	1,735,955.0	175.87	2,613,037.4	193.57	19,690,800.4	99.97%	203.02	22,498,714.0	99.7%	177.53	2,807,913.6	-25.49
Grand Total	1,735,955.0	175.87	2,621,248.4	193.50	19,697,933.1	100%	203.03	22,562,591.3	100.0%	177.57	2,864,658.2	-25.46

**Crop of Major Tea Producing & Exporting Countries**

Country	Month	For the Month			Up-to-Date		
		2019	2020	(+/-) 2019	2019	2020	(+/-) 2019
Bangladesh *	July	11.10	12.18	1.07	39.05	33.99	-5.1
Sri Lanka	July	25.3	26.3	1.0	184.1	156.4	-27.7
Malawi	June	1.61	1.39	-0.22	34.65	31.28	-3.4
Kenya	June	42.4	46.4	4.0	212.6	301.6	89.0
North India	June	125.5	116.5	-9.0	372.3	249.8	-122.5
South India	June	25.0	22.0	-3.0	100.5	98.4	-2.1
All India	June	150.5	138.5	-12.0	472.8	348.2	-124.6

## General + Other Market(s) This/Last Week

**KOLKATA SALE 35- 25<sup>TH</sup>, 26<sup>TH</sup> & 27<sup>TH</sup> AUGUST, 2020**

CTC: There was good demand. The market for best Assams were barely steady to easier though select brighter descriptions were at times dearer.

Tea Category USC/KG	Brokens	Fannings	Dusts
BEST ASSAMS	520-561	479-520	520-561
GOOD ASSAMS	438-492	424-465	451-506
MED ASSAMS	369-410	356-397	383-410
BEST DOOARS	369-397	369-383	356-369
GOOD DOOARS	342-356	342-356	328-342
MED & PLAINER DOOARS	301-328	301-328	287-315

**SILIGURI SALE 34- 26<sup>TH</sup> AUGUST, 2020**

Strong demand for all sorts at firm to occasionally dearer levels following quality and competition.

Quotations (USC/KG)	Brokens(USC/kg)	Fannings(USC/kg)	Dust (USC/kg)
GOOD / BEST	383-444`	376-424	356-404
MEDIUM / BETTER MEDIUM	342-376	335-369	322-349
COMMON / BLF	301-335	301-328	294-315

**COONOOR SALE 35- 29<sup>TH</sup> AUGUST, 2020**

Strong demand. Brighter liquoring teas met with strong demand at prices escalated following quality and competition.

CTC Leaf(USC/KG)	Best	Good	Better Medium	Medium	Plain
Larger Brokens	282-237	244-271	235-242	229-234	211-227
Medium Brokens	305-394	267-304	259-266	246-251	227-245
Smaller Brokens	309-347	266-307	260-264	255-259	241-253
Fannings	305-350	266-304	260-264	248-259	237-246

**MOMBASA SALE 34- 24<sup>TH</sup>, 25<sup>TH</sup> & 26<sup>TH</sup> AUGUST,2020**

Strong general demand prevailed for the 135,583 packages (8,929,677.00 kilos) on offer with prices closely following quality but 25.14% remained unsold.

CTC QUOTATIONS	BP1 – USC	PF1 – USC	PD – USC	D1 - USC
BEST	323 – 536	270 – 320	296 – 338	260 – 326
GOOD	270 – 350	260 – 282	292 – 336	252 – 288
GOOD MEDIUM	242 – 360	210 – 276	250 – 334	260 – 300
MEDIUM	214 – 258	192 – 240	192 – 224	164 – 216
LOWER MEDIUM	140 – 226	148 – 198	138 – 192	144 – 182
PLAINER	130 – 207	104 – 184	118 – 172	120 – 170