

NATIONAL BROKERS LIMITED

<http://nationalbrokersbd.com/>

Tea Auctioneers since 1948

AEA MARKET REPORT – Sale 13 held on Monday, 24th August, 2020

CTC LEAFs 49,181 packages of Current Season and 50 packages of Old Season teas on offer once again met with a strong demand at dearer rates.

BROKENS: Well made good liquoring BOPs were in good demand at firm rates whilst their GBOPs continued to be a strong feature of the market and prices appreciated further. Their Medium varieties were also a good market at around last levels. Plainest met with a selective demand and were subject to fair withdrawals.

FANNINGS: Well made good liquoring Fannings were a strong market and were dearer by Tk.5/- and more. Their Mediums continued to be a good market at fully firm to slightly dearer rates. Plainest were again a selective market with fair withdrawals.

CTC DUST: 9,861 packages of Current Season teas on offer met with quite a strong demand. Best and good

liquoring Dusts sold at barely steady to irregularly easier levels. Their Medium and plainer sorts sold well at a drop of Tk.5/- to Tk.7/- closely following quality. BLF Dusts met with a good demand at slightly dearer rates. Blenders lent strong support with fair interest from the Loose tea buyers.

COMMENTS: Strong demand continued to prevail in this week's sale particularly for all good and good Medium varieties. Major Blenders lent useful support with Loose tea buyers continuing to operate actively. It was evident throughout the sale that buyers closely followed quality. Withdrawals were again less this week.

Dusts sold well.

Our catalogue (Sale 13): Avg: Tk 191.88, Sold 88.0% & (Sale 12) Avg: Tk 189.53, sold 84.6%.

Quotations – This Week – (In Taka)

Brokens	This Week	Last Week	Fannings	This week	Last Week	Dust	This week	Last Week
Large	175-195	170-180	Best	210-215	205-210	PD	163-243	205-210
Medium	175-205	170-195	Good	195-205	190-200	RD	140-300	190-200
Small	185-215	180-210	Medium	165-180	160-175	D	179-257	160-175
Plain	140-160	130-155	Plain	135-155	125-150	CD	134-323	125-150
BLF	140-170	125-150	BLF	140-165	125-145	BLF	134-228	125-145

Exchange Rates 24th August, 2020 Sterling Pound: Tk. 108.5616, dollar: Tk. 83.6702

Top Prices – This Week

Category – CTC	Garden	Grade	Package	Price	Buyer(s)
Brokens	Madhupur	GBOP	20	260/-	Nishat
Fannings	Rangapani	GOF	20	264/-	Nishat/LTH
Clonal Brokens	Karnafuli	GBOP	20	291/-	PA/AKT
Clonal Fannings	Karnafuli	OF(BT2)	30	295/-	SR/BC
PD/RD	* Madhupur /Madhupur	RD(BT1)	10/10	300/-	AKT
D	* Madhupur	D(BT1)	20	305/-	Shawon/MA
CD	Madhupur	CD(BT1)	10	368/-	Shawon

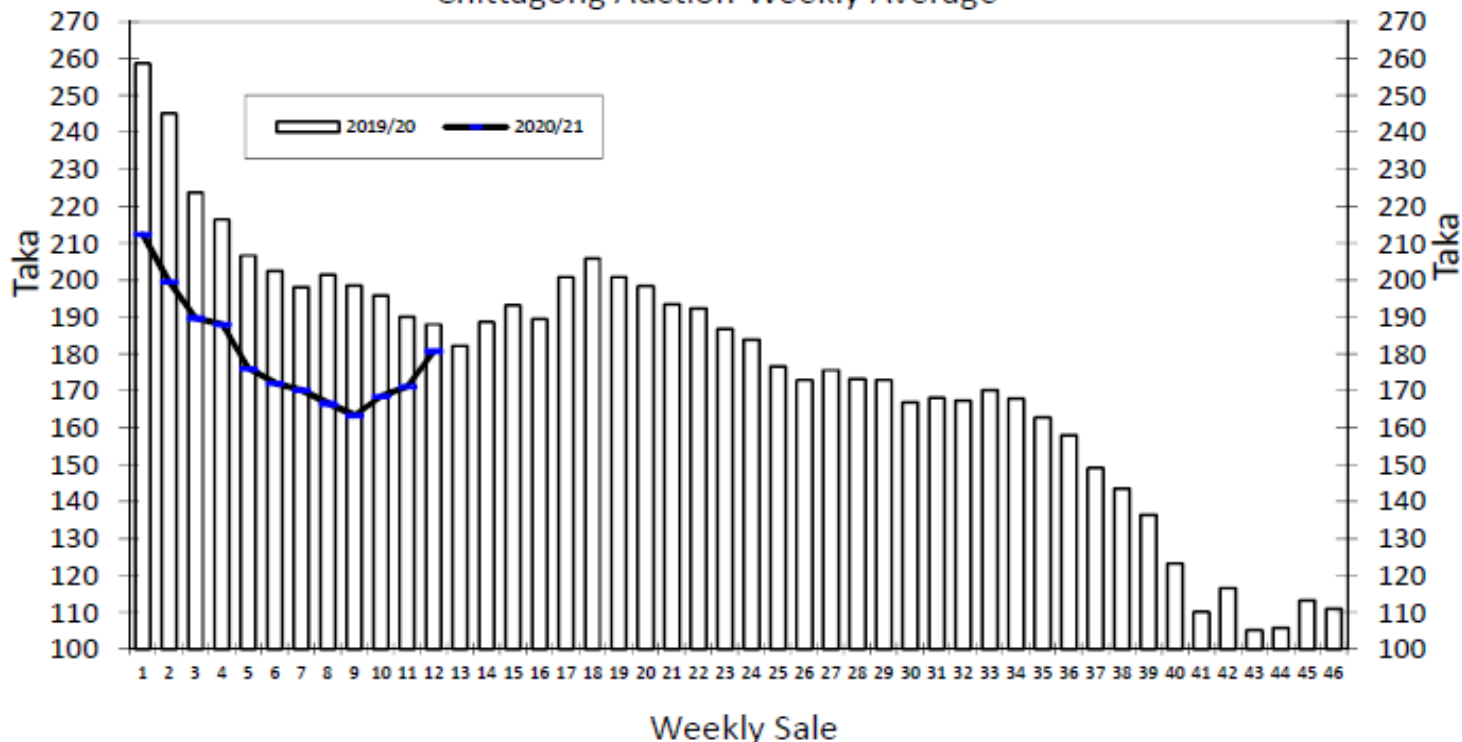
* Above price(s) realised in our catalogue

Offerings

Type	This Sale (Sale 13)				Next Sale (Sale 14)			
	Season 2020-2021		Season 2019-2020		Season 2020-2021		Season 2019-2020	
	Packages	Qty/Kg	Packages	Qty/Kg	Packages	Qty/Kg	Packages	Qty/Kg
Leaf	49,231	2,697,859	40,767	2,233,022	48,828	2,677,728	56,232	3,081,335
Dust	9,383	514,188	7,878	432,790	11,723	642,420	10,474	575,420
Total	58,614	3,212,047	48,645	2,665,812	60,551	3,320,148	66,706	3,656,755

Chittagong Auction Average: Sale 12
Season 2020/21: Tk. 180.84 & Season 2019/20: Tk. 187.89

Chittagong Auction Weekly Average



Chittagong Auction Statistics - Sale: 12
Quantities of Teas Sold & Average Prices Realised

Category	For the Sale				Up-to-Date Sale							
	Season 2019/20		Season 2020/21		Season 2019/20		Season 2020/21		(+/-) Season 2019/20			
	Qty. (Kg)	Taka	Qty. (Kg)	Taka	Qty. (Kg)	(%)	Taka	Qty. (Kg)	(%)	Taka	Qty. (Kg)	Taka
CTC LEAF	1,945,869.1	186.04	2,375,104.2	172.53	14,420,332.1	80.3%	203.96	15,750,817.6	79.0%	170.03	1,330,485.5	-33.93
CTC DUST	435,270.0	196.18	484,431.0	221.58	3,487,916.8	19.4%	214.24	3,807,427.7	19.1%	204.66	319,510.9	-9.58
Sub-Total	2,381,139.1	187.89	2,859,535.2	180.84	17,908,248.9	99.7%	205.96	19,558,245.3	98.1%	176.77	1,649,996.4	-29.19
ORTHODOX	0.0	0.00	0.0	0.00	297.5	0.0%	236.77	299.0	0.0%	705.00	1.5	468.23
Total	2,381,139.1	187.89	2,859,535.2	180.84	17,908,546.4	99.7%	205.96	19,558,544.3	98.1%	176.78	1,649,997.9	-29.18
GREEN TEA	0.0	0.00	48.5	700.00	0.0	0.00%	0.00	1,754.2	0.0%	397.01	1,754.2	397.01
Total	2,381,139.1	187.89	2,859,583.7	180.85	17,908,546.4	99.7%	205.96	19,560,298.5	98.1%	176.80	1,651,752.1	-29.16
Other (s)	23,322.3	72.52	3,836.5	159.73	53,431.7	0.3%	103.57	381,044.4	99.7%	107.80	327,612.7	4.23
G.Total	2,404,461.4	186.77	2,863,420.2	180.82	17,961,978.1	100.0%	205.66	19,941,342.9	100%	175.48	1,979,364.8	-30.18

Buyer Purchase Analysis

Buyer	For the Sale				Up-to-Date Sale							
	Season 2019/20		Season 2020/21		Season 2019/20		Season 2020/21		(+/-) Season 2019/20			
	Qty. (Kg)	Taka	Qty. (Kg)	Taka	Qty. (Kg)	(%)	Taka	Qty. (Kg)	(%)	Taka	Qty. (Kg)	Taka
Export	0.0	0.00	0.0	0.00	7,132.7	0.03%	247.23	55,666.3	0.3%	196.29	48,533.6	-50.94
Internal	2,404,461.4	186.77	2,863,420.2	180.82	17,954,845.4	99.97%	205.64	19,885,676.6	99.7%	175.42	1,930,831.2	-30.22
Grand Total	2,404,461.4	186.77	2,863,420.2	180.82	17,961,978.1	100%	205.66	19,941,342.9	100.0%	175.48	1,979,364.8	-30.18

Crop of Major Tea Producing & Exporting Countries

Country	Month	For the Month			Up-to-Date		
		2019	2020	(+/-) 2019	2019	2020	(+/-) 2019
Bangladesh *	July	11.10	12.18	1.07	39.05	33.99	-5.1
Malawi	June	1.61	1.39	-0.22	34.65	31.28	-3.4
Kenya	June	42.4	46.4	4.0	212.6	301.6	89.0
Sri Lanka	June	27.5	26.8	-0.7	158.8	129.0	-29.8
North India	June	125.5	116.5	-9.0	372.3	249.8	-122.5
South India	June	25.0	22.0	-3.0	100.5	98.4	-2.1
All India	June	150.5	138.5	-12.0	472.8	348.2	-124.6

General + Other Market(s) This/Last Week

KOLKATA SALE 34- 18TH & 19TH AUGUST, 2020

CTC: Good demand. Best and Good Assams sold at barely steady to irregularly easier levels. Medium and Plainer Assams sold at levels which were irregular around last and at times tending easier. Doors sold around last levels. Export accounts were selective on larger Brokens this week. Local segments operated on the Doors.

Tea Category USC/KG	Brokens	Fannings	Dusts
BEST ASSAMS	441-668	428-508	454-548
GOOD ASSAMS	414-428	361-414	401-441
MED ASSAMS	321-401	321-348	334-388
BEST DOOARS	361-401	348-401	307-348
GOOD DOOARS	307-334	294-334	281-294
MED & PLAINER DOOARS	254-294	254-281	254-267

SILIGURI SALE 33- 19TH AUGUST, 2020

LEAF: Strong demand. Levels across all segments were firm to occasionally dearer with quality and competition. DUST: Good demand at last levels. All sections operated.

Quotations (USC/KG)	Brokens(USC/kg)	Fannings(USC/kg)	Dust (USC/kg)
GOOD / BEST	368-434	354-421	348-388
MEDIUM / BETTER MEDIUM	328-361	321-354	301-341
COMMON / BLF	267-321	267-314	267-294

COONOOR SALE 34- 22ND AUGUST, 2020

Good Demand. Brighter liquoring teas met with selective demand at prices firm to occasionally dearer. There were few out lots in this category. Exporters were fairly selective.

CTC Leaf(USC/KG)	Best	Good	Better Medium	Medium	Plain
Larger Brokens	262-309	230-259	218-229	199-217	174-198
Medium Brokens	294-334	242-275	231-241	218-230	203-217
Smaller Brokens	291-364	255-275	241-254	215-239	214-227
Fannings	281-328	255-269	242-254	229-241	214-227

MOMBASA SALE 33- 17TH, 18TH & 19TH AUGUST, 2020

There was strong demand for the 136,681 packages (9,009,501.00 kilos) available closely following quality. 18.28% were unsold.

CTC QUOTATIONS	BP1 – USC	PF1 – USC	PD – USC	D1 - USC
BEST	268 – 484	232 – 316	264 – 304	258 – 316
GOOD	220 – 384	228 – 268	264 – 298	250 – 290
GOOD MEDIUM	260 – 335	200 – 266	202 – 294	178 – 270
MEDIUM	200 - 292	180 – 232	170 – 229	170 – 226
LOWER MEDIUM	146 – 234	130 – 193	110 – 188	116 – 184
PLAINER	134 – 216	110 – 180	116 – 177	116 – 178