

NATIONAL BROKERS LIMITED

<http://nationalbrokersbd.com/>

Tea Auctioneers since 1948

TEA MARKET REPORT – Sale 12 held on Monday, 17th August, 2020

CTC LEAF: 56,721 packages of Current Season and 70 packages of Old Season teas on offer met with a strong demand at dearer rates.

BROKENS: Well made good liquoring BOPs and GBOPs were a strong feature of the market and prices advanced by Tk.5/- to Tk.10/- over last. Their Medium varieties were a stronger market and appreciated by Tk.10/- to Tk.15/- and occasionally more. Plain varieties were also a dearer market but the plainest were mostly withdrawn without bids.

FANNINGS: Likewise, well made good liquoring Fannings were a strong market and were dearer by Tk.5/- to Tk.10/- whilst their Mediums were stronger and appreciated by Tk.10/- to Tk.15/-. Plainest sorts were again a selective market with quite fair withdrawals.

CTC DUST: 9,861 packages of Current Season teas on offer met with a good demand. Good liquoring Dusts particularly Ds met with a good competition and were dearer by Tk.5/- to Tk.7/- and sometimes more following quality. Medium and plainer sorts were irregular around last. BLF Dusts also met with improved enquiry and sold around last levels with less withdrawals. Blenders lent strong support with fair interest from the Loose tea buyers. COMMENTS: Demand was stronger this week with more competition from the Blenders which resulted in substantially higher prices than last week. Loose tea buyers continued to operate actively. Withdrawals were much less than last week.

Dusts sold well.

Our catalogue (Sale 12): Avg: Tk 193.65, Sold 76.6% & (Sale 11) Avg: Tk 184.35, sold 65.5%.

Quotations – This Week – (In Taka)

Brokens	This Week	Last Week	Fannings	This week	Last Week	Dust	This week	Last Week
Large	170-180	165-175	Best	205-210	200-205	PD	140-251	143-251
Medium	170-195	165-180	Good	190-200	185-195	RD	125-302	110-307
Small	180-210	175-205	Medium	160-175	150-165	D	171-300	140-296
Plain	130-155	125-150	Plain	125-150	120-145	CD	200-321	180-330
BLF	125-150	115-140	BLF	125-145	110-140	BLF	149-200	110-241

Exchange Rates 17th August, 2020 Sterling Pound: Tk. 108.6861, dollar: Tk. 83.6702

Top Prices – This Week

Category – CTC	Garden	Grade	Package	Price	Buyer(s)
Brokens	* Madhupur	GBOP	20	265/-	Ali/Shawon
Fannings	* Madhupur	PF	30	255/-	Ali/Ispahani
Clonal Brokens	* Madhupur	GBOP(BT1)	20	304/-	Prima/Shawon
Clonal Fannings	Kaiyacherra Dalu	OF	10	305/-	SR
PD/RD	* Madhupur	RD(BT2)	10	302/-	MA
D	* Madhupur	D(BT1)	20	300/-	Shawon
CD	Madhupur	CD(BT1)	10	352/-	Bornali

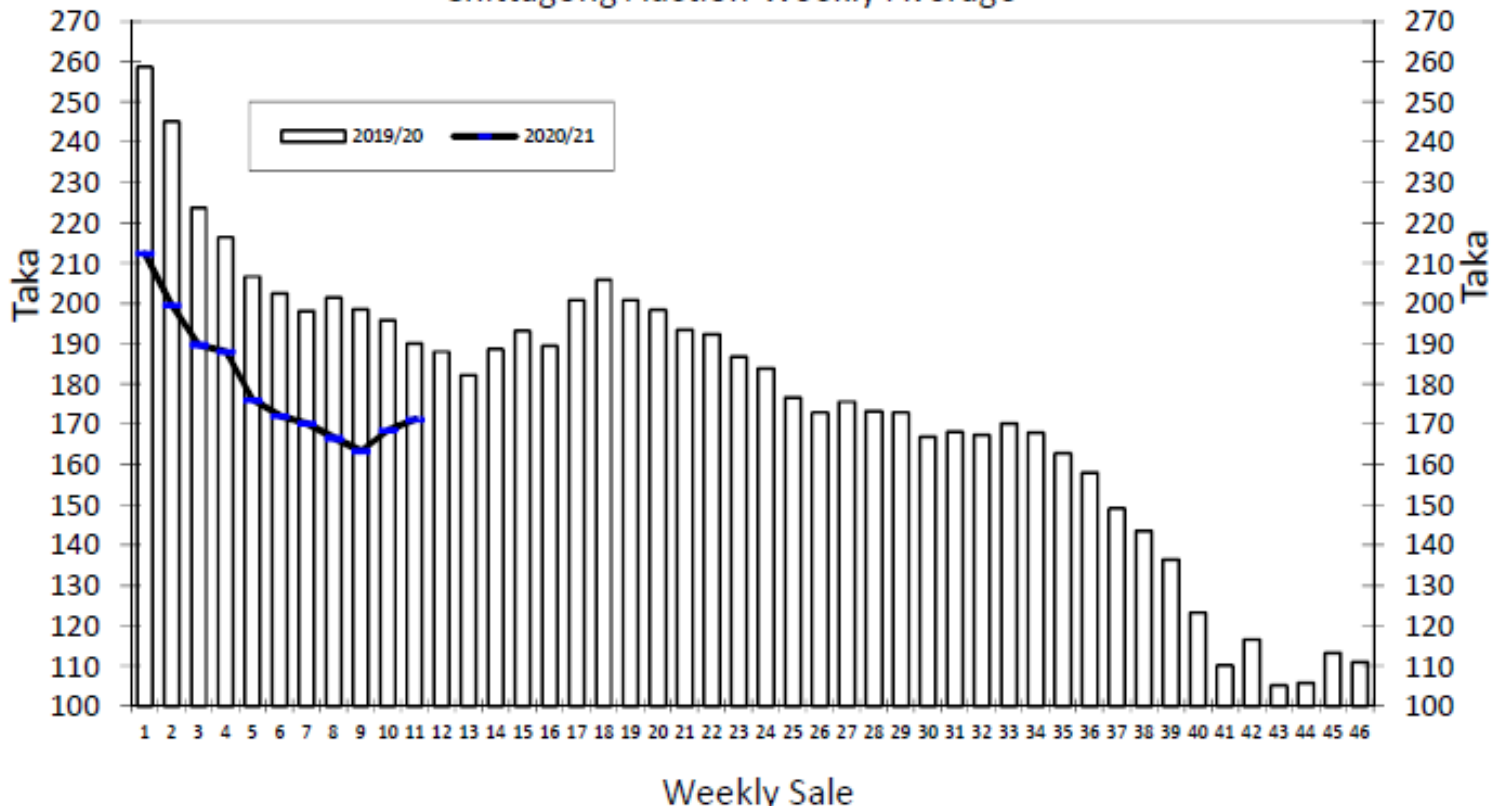
* Above price(s) realised in our catalogue

Offerings

Type	This Sale (Sale 12)				Next Sale (Sale 13)			
	Season 2020-2021		Season 2019-2020		Season 2020-2021		Season 2019-2020	
	Packages	Qty/Kg	Packages	Qty/Kg	Packages	Qty/Kg	Packages	Qty/Kg
Leaf	56,791	3,112,147	54,296	2,975,203	49,231	2,699,828	40,767	2,233,022
Dust	9,861	540,383	10,362	569,436	9,383	514,188	7,878	432,790
Total	66,652	3,652,530	64,658	3,544,639	58,614	3,214,016	48,645	2,665,812

Chittagong Auction Average: Sale 11
Season 2020/21: Tk. 171.19 & Season 2019/20: Tk. 190.15

Chittagong Auction Weekly Average



Chittagong Auction Statistics - Sale: 11

Quantities of Teas Sold & Average Prices Realised

Category	For the Sale				Up-to-Date Sale							
	Season 2019/20		Season 2020/21		Season 2019/20		Season 2020/21		Season 2020/21		(+/-) Season 2019/20	
	Qty. (Kg)	Taka	Qty. (Kg)	Taka	Qty. (Kg)	(%)	Taka	Qty. (Kg)	(%)	Taka	Qty. (Kg)	Taka
CTC LEAF	1,864,526.5	188.68	2,112,288.5	161.10	12,474,463.0	80.2%	206.75	13,375,713.4	78.3%	169.58	901,250.4	-37.17
CTC DUST	390,350.5	197.13	455,273.5	218.00	3,052,646.8	19.6%	216.81	3,322,996.7	19.5%	202.19	270,349.9	-14.62
Sub-Total	2,254,877.0	190.15	2,567,562.0	171.19	15,527,109.8	99.8%	208.73	16,698,710.1	97.8%	176.07	1,171,600.3	-32.66
ORTHODOX	99.5	300.00	299.0	705.00	297.5	0.0%	236.77	299.0	0.0%	705.00	1.5	468.23
Total	2,254,976.5	190.15	2,567,861.0	171.25	15,527,407.3	99.8%	208.73	16,699,009.1	97.8%	176.08	1,171,601.8	-32.65
GREEN TEA	0.0	0.00	0.0	0.00	0.0	0.00%	0.00	1,705.7	0.0%	388.39	1,705.7	388.39
Total	2,254,976.5	190.15	2,567,861.0	171.25	15,527,407.3	99.8%	208.73	16,700,714.8	97.8%	176.10	1,173,307.5	-32.63
Other (s)	11,247.2	92.99	1,132.5	270.51	30,109.4	0.2%	167.62	377,207.9	99.7%	107.27	347,098.5	-60.35
G.Total	2,266,223.7	189.67	2,568,993.5	171.29	15,557,516.7	100.0%	208.57	17,077,922.7	100%	174.58	1,520,406.0	-33.99

Buyer Purchase Analysis

Buyer	For the Sale				Up-to-Date Sale							
	Season 2019/20		Season 2020/21		Season 2019/20		Season 2020/21		Season 2020/21		(+/-) Season 2019/20	
	Qty. (Kg)	Taka	Qty. (Kg)	Taka	Qty. (Kg)	(%)	Taka	Qty. (Kg)	(%)	Taka	Qty. (Kg)	Taka
Export	0.0	0.00	0.0	0.00	7,132.7	0.03%	247.23	55,666.3	0.3%	196.29	48,533.6	-50.94
Internal	2,266,223.7	189.67	2,568,993.5	171.29	15,550,384.0	99.97%	208.56	17,022,256.4	99.7%	174.51	1,471,872.4	-34.05
Grand Total	2,266,223.7	189.67	2,568,993.5	171.29	15,557,516.7	100%	208.57	17,077,922.7	100.0%	174.58	1,520,406.0	-33.99

Crop of Major Tea Producing & Exporting Countries

Country	Month	For the Month			Up-to-Date		
		2019	2020	(+/-) 2019	2019	2020	(+/-) 2019
Bangladesh *	June	11.67	8.96	-2.70	27.95	21.81	-6.1
Malawi	June	1.61	1.39	-0.22	34.65	31.28	-3.4
Kenya	June	42.4	46.4	4.0	212.6	301.6	89.0
Sri Lanka	June	27.5	26.8	-0.7	158.8	129.0	-29.8
North India	June	125.5	116.5	-9.0	372.3	249.8	-122.5
South India	June	25.0	22.0	-3.0	100.5	98.4	-2.1
All India	June	150.5	138.5	-12.0	472.8	348.2	-124.6

General + Other Market(s) This/Last Week

KOLKATA SALE 33-12TH & 13TH AUGUST, 2020

CTC Leaf: Good demand. Best and Good Assams sold at levels which were irregular around last. Remainder sold at firm to at times dearer levels. Dooars were firm to dearer. Export accounts were active on larger Brokens. Local segments operated on the Dooars.

Tea Category USC/KG	Brokens	Fannings	Dusts
BEST ASSAMS	455-668	428-508	455-535
GOOD ASSAMS	428-441	374-415	401-441
MED ASSAMS	348-428	334-361	334-388
BEST DOOARS	361-401	348-401	308-348
GOOD DOOARS	308-334	294-334	281-294
MED & PLAINER DOOARS	254-294	254-288	254-268

SILIGURI SALE 32- 12TH AUGUST, 2020

LEAF: Good general demand. Levels for best/good and better medium sorts were irregular and at times tended easier following quality. Medium/ common varieties were steady to easier.

Quotations (USC/KG)	Brokens(USC/kg)	Fannings(USC/kg)	Dust (USC/kg)
GOOD / BEST	368-421	354-401	334-388
MEDIUM / BETTER MEDIUM	328-361	321-348	301-328
COMMON / BLF	268-321	268-314	268-294

COONOOR SALE 33- 14TH AUGUST, 2020

Strong Demand. All sorts met with strong demand especially with the progress of sale and teas were sold at substantially higher prices. Brighter teas were dearer by Rs 5 to 7 and sometimes more following quality.

CTC Leaf(USC/KG)	Best	Good	Better Medium	Medium	Plain
Larger Brokens	236-296	216-234	202-214	185-201	161-183
Medium Brokens	282-389	229-269	218-228	209-217	196-208
Smaller Brokens	260-366	242-258	232-241	222-230	201-221
Fannings	254-348	240-253	229-238	216-228	200-214

MOMBASA SALE 32- 10TH, 11TH & 12TH AUGUST, 2020

Offerings: 86,024 packages (5,659,010.00 kilos) with 18.95% remaining without bids.

CTC QUOTATIONS	BP1 – USC	PF1 – USC	PD – USC	D1 - USC
BEST	239 – 531	224 – 316	240 – 315	250 – 300
GOOD	222 – 304	216 – 246	230 – 270	220 – 282
GOOD MEDIUM	228 – 290	190 – 240	190 – 268	235 – 278
MEDIUM	188 – 250	168 – 216	174 – 226	170 – 236
LOWER MEDIUM	150 – 230	130 – 186	139 – 184	104 – 190
PLAINER	136 – 222	105 – 188	110 – 170	110 – 164