

NATIONAL BROKERS LIMITED

<http://nationalbrokersbd.com/>

Tea Auctioneers since 1948

TEA MARKET REPORT – Sale 09 held on Monday, 20th July, 2020

CTC LEAF: 56,610 packages of Current Season teas & 90 packages of Old Season Teas on offer met with quite fair but selective demand.

BROKENS: Well made good liquoring small Brokens were a fairly good market and were about steady whilst their BOPs met with a little less demand and prices eased in line with quality. The remainder particularly the plain and BLF teas were again a lower market with more withdrawals.

FANNINGS: Well made good liquoring Fannings met with a fairly good demand but prices were a little easier compared to last. All others were again a weak feature with prices dropping further with more withdrawals.

CTC DUST: 9,813 packages of Current Season teas on offer met with a good demand. Good liquoring Ds and CDs were well competed for and sold at dearer levels.

Their Medium varieties were irregularly around last. However, plain Ds and all RDs were a lower market and eased by Tk. 5/- to Tk.7/- with fair withdrawals particularly BLF Dusts. Blenders lent strong support with fair interest from the Loose tea buyers.

COMMENTS: The sale for Leaf section of the catalogue was held at the Bangabandhu Conference Hall, World Trade Center, Chittagong and the Dust was held at the usual auction venue. Improved liquoring invoices attracted good competition and generally tended dearer. As for others, buyers were selective and closely followed quality. Both Blenders and Loose tea buyers were more active but operated selectively.

CDs were a strong feature of the sale.

Our catalogue (Sale 09): Avg: Tk 179.13 , Sold 49.7% & (Sale 08) Avg: Tk 171.09, sold 51.4%.

Quotations – This Week – (In Taka)

Brokens	This Week	Last Week	Fannings	This week	Last Week	Dust	This week	Last Week
Large	160-170	160-170	Best	190-200	190-195	PD	143-256	162-262
Medium	160-175	160-180	Good	175-185	170-185	RD	100-281	95-301
Small	170-200	165-200	Medium	155-165	150-160	D	124-291	115-266
Plain	125-145	135-150	Plain	125-145	130-145	CD	200-350	150-318
BLF	105-130	105-130	BLF	105-130	105-130	BLF	100-224	95-204

Exchange Rates 19th July, 2020 Sterling Pound: Tk. 103.9980, dollar: Tk. 83.6702

Top Prices – This Week

Category – CTC	Garden	Grade	Package	Price	Buyer(s)
Brokens	* Madhupur	GBOP	20	246/-	Bonani/City
Fannings	* Daragaon	PF	30	260/-	AKT/City
Clonal Brokens	* Madhupur	GBOP(BT1)	20	273/-	Lux/Uttara
Clonal Fannings	Kaiyacherra Dalu	OF	10	271/-	PA
PD/RD	* Daragaon	RD	10	281/-	AKT
D	* Madhupur	D	20	291/-	Sharif
CD	Madhupur	CD	10	353/-	Jamuna

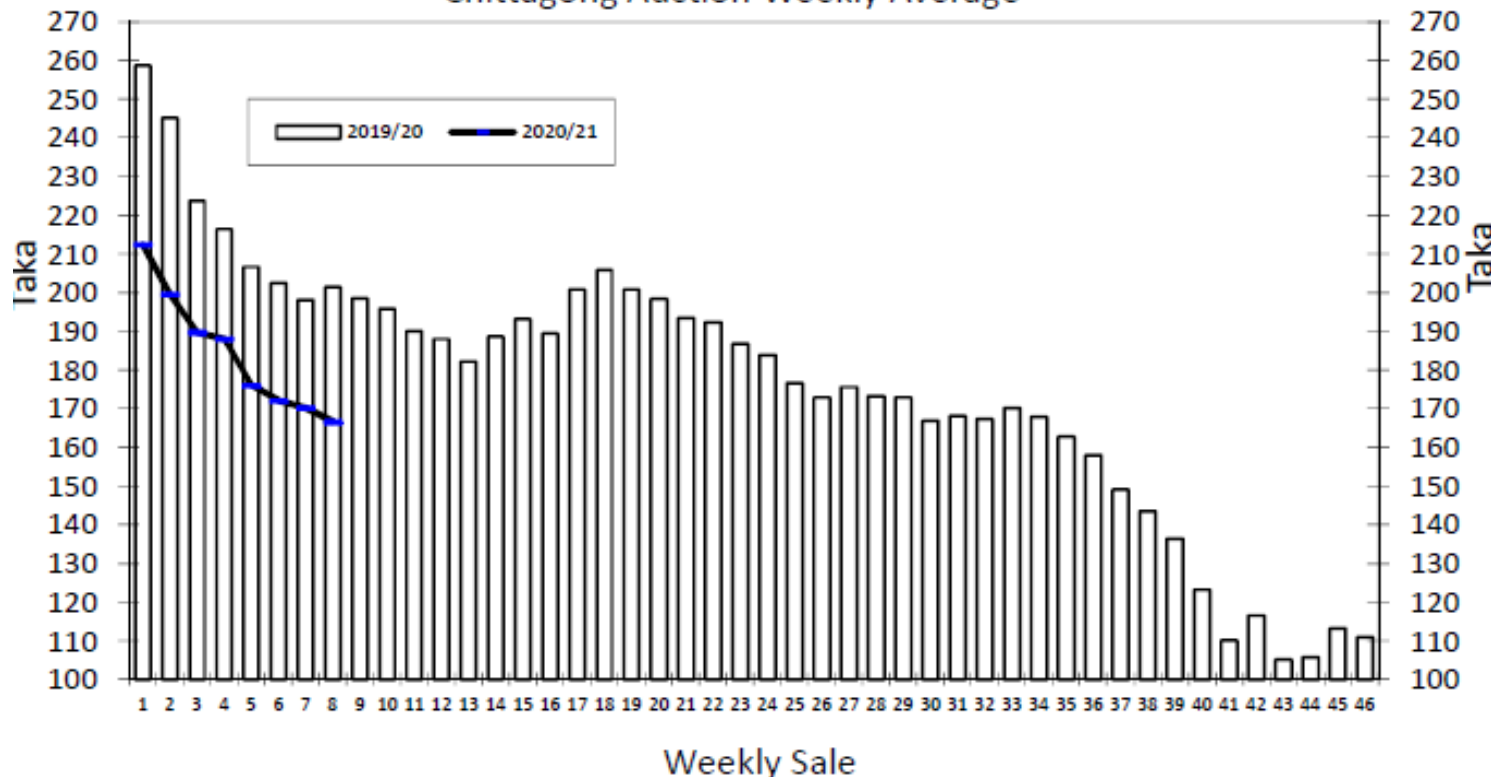
* Above price(s) realised in our catalogue

Offerings

Type	This Sale (Sale 09)				Next Sale (Sale 10)			
	Season 2020-2021		Season 2019-2020		Season 2020-2021		Season 2019-2020	
	Packages	Qty/Kg	Packages	Qty/Kg	Packages	Qty/Kg	Packages	Qty/Kg
Leaf	56,700	3,204,165	52,935	2,899,417	52,681	2,889,026	55,534	3,042,616
Dust	9,813	538,933	9,953	547,069	8,209	449,853	8,505	467,968
Total	66,513	3,743,098	62,888	3,446,486	60,890	3,338,879	64,039	3,510,584

Chittagong Auction Average: Sale 08
Season 2020/21: Tk. 166.58 & Season 2019/20: Tk. 201.44

Chittagong Auction Weekly Average



Chittagong Auction Statistics - Sale: 08

Quantities of Teas Sold & Average Prices Realised

Category	For the Sale				Up-to-Date Sale							
	Season 2019/20		Season 2020/21		Season 2019/20		Season 2020/21		(+/-) Season 2019/20			
	Qty. (Kg)	Taka	Qty. (Kg)	Taka	Qty. (Kg)	(%)	Taka	Qty. (Kg)	(%)	Taka	Qty. (Kg)	Taka
CTC LEAF	979,665.0	198.44	1,285,962.2	159.02	7,484,430.0	79.2%	216.31	8,030,638.5	76.8%	176.61	546,208.5	-39.70
CTC DUST	281,950.1	211.87	356,423.0	193.87	1,953,593.4	20.7%	223.97	2,047,762.2	19.6%	199.95	94,168.8	-24.02
Sub-Total	1,261,615.1	201.44	1,642,385.2	166.58	9,438,023.4	99.8%	217.90	10,078,400.7	96.4%	181.35	640,377.3	-36.54
ORTHODOX	0.0	0.00	0.0	0.00	198.0	0.0%	205.00	0.0	0.0%	0.00	-198.0	-205.00
Total	1,261,615.1	201.44	1,642,385.2	166.58	9,438,221.4	99.8%	217.90	10,078,400.7	96.4%	181.35	640,179.3	-36.54
GREEN TEA	0.0	0.00	1,098.0	350.00	0.0	0.00%	0.00	1,647.2	0.0%	366.67	1,647.2	366.67
Total	1,261,615.1	201.44	1,643,483.2	170.32	9,438,221.4	99.8%	217.90	10,080,047.9	96.4%	181.38	641,826.5	-36.51
Other (s)	1,149.0	154.52	1,097.0	108.50	16,839.2	0.2%	151.83	373,229.9	99.5%	106.43	356,390.7	-45.40
G.Total	1,262,764.1	201.40	1,644,580.2	166.54	9,455,060.6	100.0%	217.78	10,453,277.8	100%	178.71	998,217.2	-39.07

Buyer Purchase Analysis

Buyer	For the Sale				Up-to-Date Sale							
	Season 2019/20		Season 2020/21		Season 2019/20		Season 2020/21		(+/-) Season 2019/20			
	Qty. (Kg)	Taka	Qty. (Kg)	Taka	Qty. (Kg)	(%)	Taka	Qty. (Kg)	(%)	Taka	Qty. (Kg)	Taka
Export	0.0	0.00	0.0	0.00	7,132.7	0.03%	247.23	55,666.3	0.5%	196.29	48,533.6	-50.94
Internal	1,262,764.1	201.40	1,644,580.2	166.54	9,447,927.9	99.97%	201.40	10,397,611.5	99.5%	178.61	949,683.6	-22.79
Grand Total	1,262,764.1	201.40	1,644,580.2	166.54	9,455,060.6	100%	217.78	10,453,277.8	100.0%	178.71	998,217.2	-39.07

Crop of Major Tea Producing & Exporting Countries

Country	Month	For the Month			Up-to-Date		
		2019	2020	(+/-) 2019	2019	2020	(+/-) 2019
Bangladesh *	June	11.67	8.96	-2.70	27.95	21.81	-6.1
Malawi	May	4.50	2.80	-1.70	33.00	29.90	-3.1
Kenya	May	37.8	47.0	9.2	170.2	255.2	85.1
Sri Lanka	May	34.1	28.4	-5.7	131.2	102.0	-29.1
North India	April	70.5	23.9	-46.6	134.5	57.7	-76.8
South India	April	14.0	15.1	1.1	53.5	55.7	2.2
All India	April	84.5	39.0	-45.5	188.0	113.4	-74.6

General + Other Market(s) This/Last Week

COONOOR SALE 29- 18TH JULY, 2020

DEMAND: - Continued strong demand prevailed on all sorts of teas on offer. **MARKET:** -Brighter sorts well absorbed at prices higher by Rs 4 to 6 and sometimes more based on quality. The good and better medium teas continue to witness incremental prices at irregular levels following quality and competition. Mediums and plainer teas once again sold at Rs 5 to 7 or more higher than last. **BUYING PATTERN:** - The major Blenders were fairly active but strong participation was witnessed from the other up-country buyers. The regional packateers were also active along with the Internal Traders, Western India buyers fairly active. Exporters continued to operate on better medium, medium and plainer teas.

CTC Leaf(USC/KG)	Best	Good	Better Medium	Medium	Plain
Larger Brokens	221-269	202-215	183-201	150-182	131-149
Medium Brokens	235-296	197-234	178-195	163-177	142-162
Smaller Brokens	242-302	229-241	194-227	177-193	162-175
Fannings	238-269	209-237	189-207	175-187	154-174

MOMBASA SALE 28- 13th & 14th JULY, 2020

History was made at the East Africa Tea Trade Association Limited's auctions with the unprecedented first auction (sale) of all Primary and Secondary Grade teas in Sale 28 2020 of 13th and 14th July 2020 on the ITTs E-Auction Platform. There was fair general demand for the 179,676 packages (11,765,578.00 kilos) on offer at irregular rates closely following quality. 21.32% were unsold. **LEAF GRADES:** 101,540 packages (6,656,585 kilos) were on offer with 21.61% unsold. **DUST GRADES:** 51,140 packages (3,765,793.00 kilos) were on offer with 20.77% unsold.

CTC QUOTATIONS	BP1 – USC	PF1 – USC	PD – USC	D1 - USC
BEST	180 – 460	187 – 330	224 – 330	254 – 324
GOOD	198 – 310	180 – 208	222 – 258	226 – 270
GOOD MEDIUM	162 – 249	157 – 208	174 – 240	166 – 271
MEDIUM	160 – 222	155 – 204	170 – 223	160 – 215
LOWER MEDIUM	126 – 190	134 – 176	100 – 196	127 – 184
PLAINER	100 – 172	100 – 159	100 – 174	090 – 170