

NATIONAL BROKERS LIMITED

<http://nationalbrokersbd.com/>

Tea Auctioneers since 1948

TEA MARKET REPORT – Sale 10 held on Monday, 27th July, 2020

CTC LEAF: 52,681 packages of Current Season teas on offer met with an improved demand.

BROKENS: Well made good liquoring small Brokens continued to be a fairly good market and mostly realised firm prices. Good BOPs met with a fairly good demand and were generally steady on last. Medium and plainer varieties were again an easier market with quite heavy withdrawals. There was a little more interest for BLF teas at around last levels.

FANNINGS: Well made good liquoring Fannings were an improved market and were mostly firm to slightly dearer compared to last. Plain Fannings continued to be a weak feature with heavy withdrawals. BLF teas suffered quite heavy withdrawals.

CTC DUST: 8,209 packages of Current Season teas on offer met with a strong demand. Select few lines of D and CD met with a very good competition and

advanced by Tk.15/- to Tk.20/-. Others were also a dearer market and prices appreciated upto Tk.15/- closely following quality. Plainer and BLF teas saw a better demand with less withdrawals compared to last sale.

COMMENTS: The sale for Leaf section of the catalogue was held at the Bangabandhu Conference Hall, World Trade Center, Chittagong and the Dust was held at the usual auction venue. Improved liquoring invoices were once again a good market generating good competition and these were often dearer. Buyers continued to be selective. All Medium and Plainer varieties were again a weak feature of the market. Blenders were a little more active this week particularly for the good liquoring sorts. Loose tea buyers were again selective.

CDs were a strong feature of the sale.

Our catalogue (Sale 10): Avg: Tk 178.50 , Sold 58.3% & (Sale 09) Avg: Tk 178.46, sold 50.5%.

Quotations – This Week – (In Taka)

Brokens	This Week	Last Week	Fannings	This week	Last Week	Dust	This week	Last Week
Large	160-170	160-170	Best	190-200	190-200	PD	152-259	143-256
Medium	160-175	160-175	Good	170-185	175-185	RD	105-305	100-281
Small	170-200	170-200	Medium	150-165	155-165	D	135-309	124-291
Plain	125-140	125-145	Plain	120-145	125-145	CD	170-360	200-350
BLF	110-130	105-130	BLF	110-130	105-130	BLF	105-239	100-224

Exchange Rates 27th July, 2020 Sterling Pound: Tk. 106.3497, dollar: Tk. 83.6702

Top Prices – This Week

Category – CTC	Garden	Grade	Package	Price	Buyer(s)
Brokens	* Madhupur	GBOP	20	235/-	Rahim/Sharif
Fannings	* Madhupur	PF	30	230/-	Danish/Wahid
Clonal Brokens	* Madhupur	GBOP(BT2)	10	282/-	Nishat
Clonal Fannings	Kaiyacherra Dalu	OF	10	243/-	Padma
PD/RD	* Madhupur	RD(BT1)	10	305/-	Danish
D	* Madhupur	D(TV1)	20	309/-	Shawon
CD	* Madhupur	CD(BT1)	10	360/-	Shawon

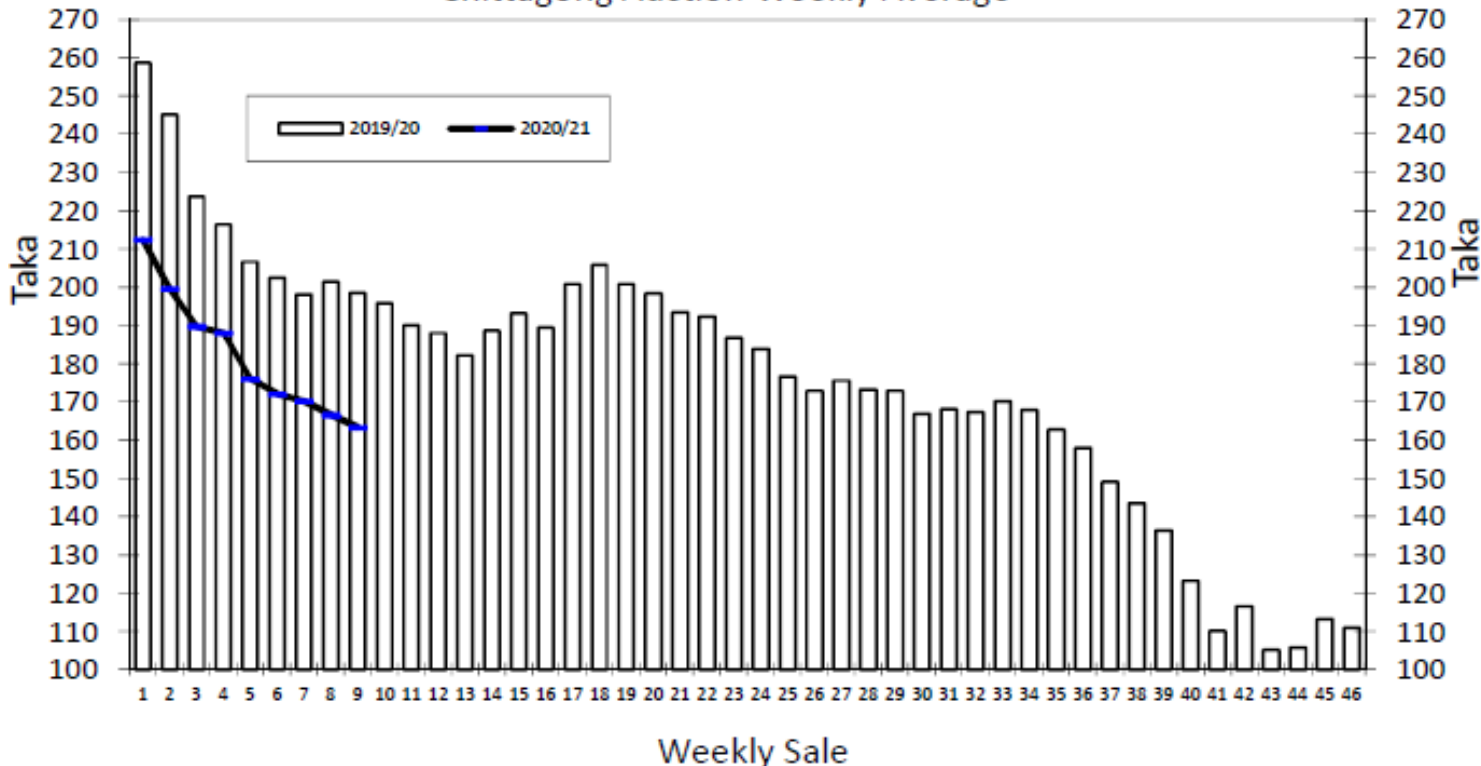
* Above price(s) realised in our catalogue

Offerings

Type	This Sale (Sale 10)				Next Sale (Sale 11)			
	Season 2020-2021		Season 2019-2020		Season 2020-2021		Season 2019-2020	
	Packages	Qty/Kg	Packages	Qty/Kg	Packages	Qty/Kg	Packages	Qty/Kg
Leaf	52,681	2,886,919	55,534	3,042,616	53,564	2,937,450	58,759	3,218,851
Dust	8,209	449,853	8,505	467,968	8,978	491,994	11,089	609,871
Total	60,890	3,336,772	64,039	3,510,584	62,542	3,429,444	69,848	3,828,721

Chittagong Auction Average: Sale 09
Season 2020/21: Tk. 163.41 & Season 2019/20: Tk. 198.46

Chittagong Auction Weekly Average



Chittagong Auction Statistics - Sale: 09
Quantities of Teas Sold & Average Prices Realised

Category	For the Sale				Up-to-Date Sale							
	Season 2019/20		Season 2020/21		Season 2019/20		Season 2020/21		(+/-) Season 2019/20			
	Qty. (Kg)	Taka	Qty. (Kg)	Taka	Qty. (Kg)	(%)	Taka	Qty. (Kg)	(%)	Taka	Qty. (Kg)	Taka
CTC LEAF	1,535,421.5	195.60	1,525,870.0	155.19	9,019,851.5	79.4%	212.79	9,556,508.5	77.0%	173.19	536,657.0	-39.60
CTC DUST	362,894.8	210.53	427,223.6	192.80	2,316,488.2	20.4%	221.87	2,474,985.8	19.9%	198.71	158,497.6	-23.15
Sub-Total	1,898,316.3	198.46	1,953,093.6	163.41	11,336,339.7	99.8%	214.64	12,031,494.3	97.0%	178.44	695,154.6	-36.20
ORTHODOX	0.0	0.00	0.0	0.00	198.0	0.0%	205.00	0.0	0.0%	0.00	-198.0	-205.00
Total	1,898,316.3	198.46	1,953,093.6	163.41	11,336,537.7	99.8%	214.64	12,031,494.3	97.0%	178.44	694,956.6	-36.20
GREEN TEA	0.0	0.00	39.0	1,000.00	0.0	0.00%	0.00	1,686.2	0.0%	381.32	1,686.2	381.32
Total	1,898,316.3	198.46	1,953,132.6	170.32	11,336,537.7	99.8%	214.64	12,033,180.5	97.0%	178.47	696,642.8	-36.17
Other (s)	1,091.0	110.00	2,835.5	143.78	17,930.2	0.2%	149.28	376,065.4	99.6%	106.71	358,135.2	-42.57
G.Total	1,899,407.3	198.41	1,955,968.1	163.40	11,354,467.9	100.0%	214.54	12,409,245.9	100%	176.29	1,054,778.0	-38.24

Buyer Purchase Analysis

Buyer	For the Sale				Up-to-Date Sale							
	Season 2019/20		Season 2020/21		Season 2019/20		Season 2020/21		(+/-) Season 2019/20			
	Qty. (Kg)	Taka	Qty. (Kg)	Taka	Qty. (Kg)	(%)	Taka	Qty. (Kg)	(%)	Taka	Qty. (Kg)	Taka
Export	0.0	0.00	0.0	0.00	7,132.7	0.03%	247.23	55,666.3	0.4%	196.29	48,533.6	-50.94
Internal	1,899,407.3	198.41	1,955,968.1	163.40	11,347,335.2	99.97%	214.52	12,353,579.6	99.6%	176.20	1,006,244.4	-38.31
Grand Total	1,899,407.3	198.41	1,955,968.1	163.40	11,354,467.9	100%	214.54	12,409,245.9	100.0%	176.29	1,054,778.0	-38.24

Crop of Major Tea Producing & Exporting Countries

Country	Month	For the Month			Up-to-Date		
		2019	2020	(+/-) 2019	2019	2020	(+/-) 2019
Bangladesh *	June	11.67	8.96	-2.70	27.95	21.81	-6.1
Malawi	June	1.61	1.39	-0.22	34.65	31.28	-3.4
Kenya	May	37.8	47.0	9.2	170.2	255.2	85.1
Sri Lanka	May	34.1	28.4	-5.7	131.2	102.0	-29.1
North India	April	70.5	23.9	-46.6	134.5	57.7	-76.8
South India	April	14.0	15.1	1.1	53.5	55.7	2.2
All India	April	84.5	39.0	-45.5	188.0	113.4	-74.6

General + Other Market(s) This/Last Week

COONOOR SALE 30- 25th JULY, 2020

CTC LEAF: Good Demand. Brighter category bolder grades were firm to dearer, the medium and smaller Brokens sold irregularly around last, the Fannings were barely steady. The good and better medium teas were absorbed at irregular rates except for the smaller Brokens which appreciated by Rs. 3 to 5, however the Fannings were barely steady. Medium and plainer bolder Brokens and Fannings were irregular and sometimes lower especially towards the fag end of the sale whilst the medium and smaller Brokens in this category were dearer by up to Rs 5. The major blenders were mainstay of the market with equally good participation from up country buyers and the regional packeteers. The other Internal and local buyers were fairly active. Exporters were rather selective this week.

CTC Leaf(USC/KG)	Best	Good	Better Medium	Medium	Plain
Larger Brokens	223-266	196-216	169-195	156-168	130-154
Medium Brokens	244-306	201-243	185-200	175-184	145-173
Smaller Brokens	248-316	236-247	197-235	183-196	165-181
Fannings	236-279	209-235	189-208	180-188	154-179

MOMBASA SALE 29- 20th, 21st & 22nd JULY, 2020

Improved general demand for the 193,759 packages (12,736,598.50 kilos) in the market closely following quality and 20.87% remained unsold. LEAF GRADES Offerings: 114,100 packages (7,505,511 kilos) with 20.72% unsold. The best BP1s on offer appreciated by USC2 to USC8 while brighter varieties met an irregular interest varying between firm to USC6 above last rates to easier by up to USC36 and a few invoices were unsold. Medium types were better absorbed at steady to USC13 dearer with lower mediums holding firm to USC4 above previous week's levels but some lines were neglected. Plainer descriptions were firm to USC12 below previous rates where sold. Best PF1s in the market gained USC4 to USC6 with brighter sorts better absorbed at USC2 to USC21 dearer but some teas remained without bids. Medium categories saw an irregular enquiry ranging between firm to USC10 above last rates to easier by up to USC5 and some invoices were unsold while lower medium types ranged between steady to USC14 above last levels to easier by up to USC6 with some teas neglected. Plainer categories were firm to USC5 easier and some invoices remained unsold.

CTC QUOTATIONS	BP1 – USC	PF1 – USC	PD – USC	D1 - USC
BEST	188 – 462	193 – 334	226 – 325	240 – 320
GOOD	204 – 274	182 – 229	224 – 258	228 – 282
GOOD MEDIUM	162 – 262	160 – 218	176 – 244	220 – 276
MEDIUM	160 – 224	156 – 199	172 – 221	163 – 226
LOWER MEDIUM	126 – 194	128 – 190	124 – 183	110 – 182
PLAINER	100 – 160	100 – 154	110 – 172	112 – 168

We wish you Eid Mubarak