

# NATIONAL BROKERS LIMITED

<http://nationalbrokersbd.com/>

**Tea Auctioneers since 1948**

## TEA MARKET REPORT – Sale 45 held on Wednesday 18<sup>th</sup> March, 2020

CTC LEAF: 25,910 packages of Current Season Teas on offer met with a fairly strong demand at irregular rates.

BROKENS: All Brokens were a strong market and were often dearer by upto Tk.10/-. However, a few very fibrous types were often easier. There was a nominal withdrawal in these categories.

FANNINGS: Cleaner varieties met with a fair demand whilst plainer types met with more demand and sold at around steady rates. However, there were some withdrawals.

CTC DUST: 3,707 packages of Current Season teas on offer met with a fair demand. Good and Medium

liquoring teas were in good demand. CDs met with strong demand. Plain and BLF teas were easier by Tk.10/- to Tk.15/- with some withdrawals. Loose tea buyers were active whilst Blenders were very selective.

COMMENTS: Loose tea buyers were the dominant feature in the market and accounted for most of the teas particularly the Brokens grades. Blenders also lent fair support particularly for the cleaner varieties on offer. CDs met with a strong demand.

**Our catalogue (Sale 45): Avg: Tk 112.81, Sold 81.0%**  
& ( Sale 44 ) Avg: Tk 103.45, sold 91.5%.

### Quotations – This Week – (In Taka)

Brokens	This Week	Last Week	Fannings	This week	Last Week	Dust	This week	Last Week
Large	85-115	80-105	Best	150-170	180-200	PD	75-150	80-180
Medium	95-125	90-110	Good	125-140	140-150	RD	72-177	80-284
Small	100-130	90-120	Medium	90-105	95-115	D	128-186	100-173
Plain	80-90	75-85	Plain	75-85	75-85	CD	194-235	163-244
BLF	NQTA	75-90 nom	BLF	NQTA	75-90 nom	BLF	NA	NA

(BLF- Bought Leaf Factory)

Exchange Rates 18<sup>th</sup> March, 2020 Sterling Pound: Tk. 100.4170 dollar: Tk. 83.6702

Top Prices – This Week

Category – CTC	Garden	Grade	Package	Price	Buyer(s)
Brokens	* Madhupur	GBOP(S)	10	259/-	Maria
Fannings	* Madhupur	PF	10	237/-	BC
Clonal Brokens	* Madhupur	GBOP(BT1)	10	316/-	HTS
Clonal Fannings	Clevedon	PF	10	306/-	BC
PD/RD (Incl Clone)	* Daragaon	RD	10	177/-	AKT
D (Incl Clone)	* Amrail	D	20	186/-	Meghna/AKT
CD (Incl Clone)	* Lungla	CD	10	235/-	Danish

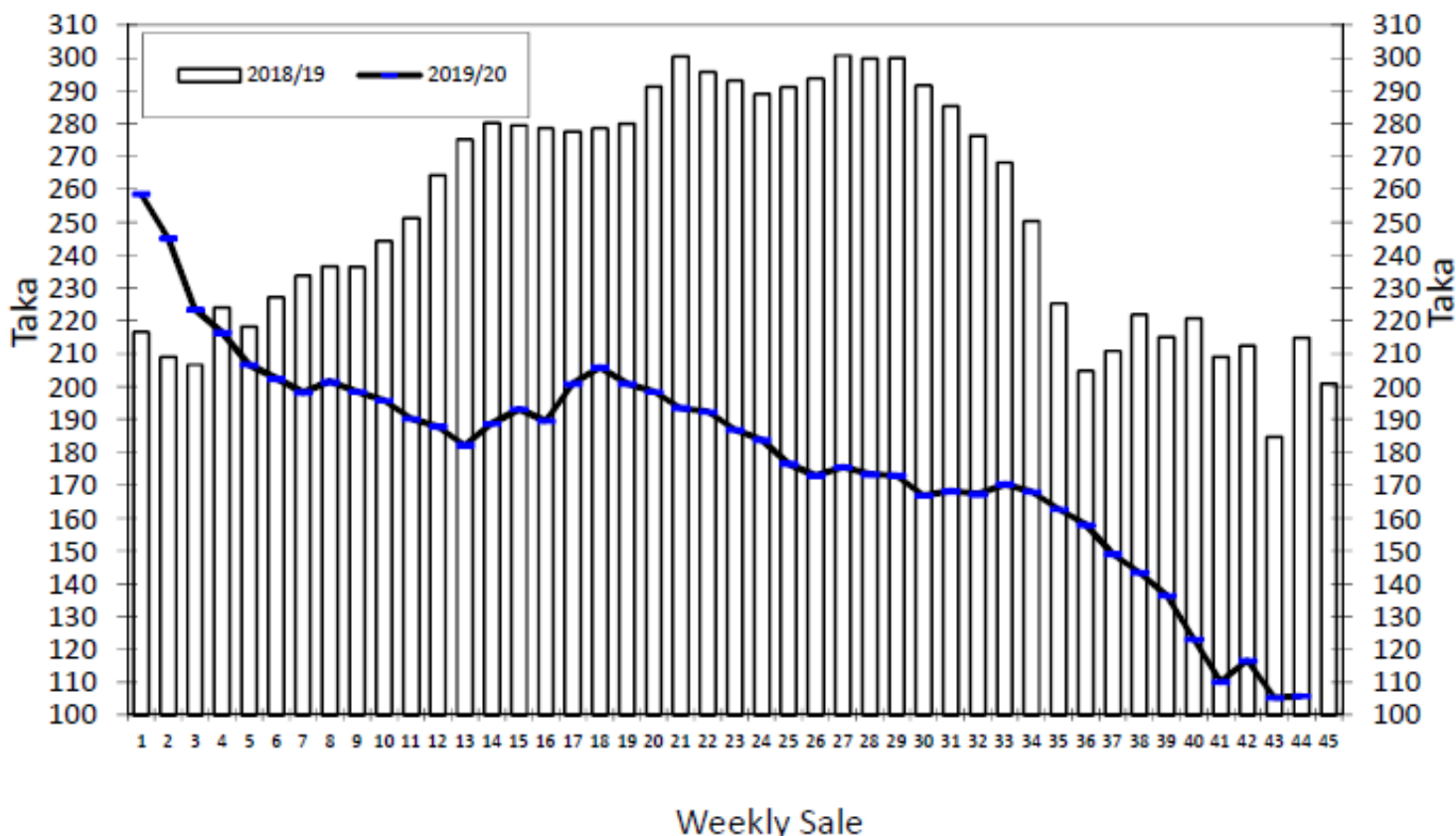
\* Above price(s) realised in our catalogue

### Offerings

Type	This Sale ( Sale 45 )				Next Sale ( Sale 46 )			
	Season 2019-2020		Season 2018-2019		Season 2019-2020		Season 2018-2019 (Final)	
	Packages	Qty/Kg	Packages	Qty/Kg	Packages	Qty/Kg	Packages	Qty/Kg
Leaf	25,910	1,417,277	8,810	480,496	10,297	563,246	<b>No Sale</b>	
Dust	3,707	202,773	706	38,904	2,619	143,259		
Total	29,617	1,620,050	9,516	519,400	12,916	706,505		

Chittagong Auction Average: Sale 44  
Season 2019/20: Tk. 105.75 & Season 2018/19: Tk. 214.84

### Chittagong Auction Weekly Average



**Chittagong Auction Statistics - Sale: 44**

**Quantities of Teas Sold & Average Prices Realised**

Category	For the Sale						Up-to-Date Sale					
	Season 2018/19		Season 2019/20		Season 2018/19		Season 2019/20		(+/-) Season 2018/19			
	Qty. (Kg)	Taka	Qty. (Kg)	Taka	Qty. (Kg)	(%)	Taka	Qty. (Kg)	(%)	Taka	Qty. (Kg)	Taka
CTC LEAF	669,165.5	211.96	1,807,090.5	99.64	64,225,980.2	81.3%	261.66	72,964,469.7	82.2%	174.36	8,738,489.5	-87.30
CTC DUST	110,446.5	232.32	374,542.7	135.21	14,340,332.5	18.1%	270.63	15,449,034.2	17.4%	193.35	1,108,701.7	-77.28
Sub-Total	779,612.0	214.84	2,181,633.2	105.75	78,566,312.7	99.4%	263.30	88,413,503.9	99.6%	177.68	9,847,191.2	-85.62
ORTHODOX	0.0	0.00	0.0	0.00	1,013.5	0.0%	545.30	297.5	0.0%	236.77	-716.0	-308.53
Total	779,612.0	214.84	2,181,633.2	105.75	78,567,326.2	99.4%	263.30	88,413,801.4	99.6%	177.68	9,846,475.2	-85.63
GREEN TEA	0.0	0.00	0.0	0.00	18,662.5	0.02%	400.00	4,042.5	0.0%	536.10	-14,620.0	136.10
Total	779,612.0	214.84	2,181,633.2	105.75	78,585,988.7	99.4%	263.34	88,417,843.9	99.6%	177.70	9,831,855.2	-85.64
Other (s)	19,348.0	321.68	547.0	60.00	437,417.5	0.6%	214.29	389,165.9	0.4%	80.49	-48,251.6	-133.80
G.Total	798,960.0	217.43	2,182,180.2	105.74	79,023,406.2	100%	263.07	88,807,009.8	100%	177.27	9,783,603.6	-85.80

**Buyer Purchase Analysis**

Buyer	For the Sale						Up-to-Date Sale					
	Season 2018/19		Season 2019/20		Season 2018/19		Season 2019/20		(+/-) Season 2018/19			
	Qty. (Kg)	Taka	Qty. (Kg)	Taka	Qty. (Kg)	(%)	Taka	Qty. (Kg)	(%)	Taka	Qty. (Kg)	Taka
Export	0.0	0.00	140,316.5	73.90	26,064.6	0.03%	267.92	1,319,888.7	1.49%	86.43	1,293,824.1	-181.49
Internal	798,960.0	217.43	2,041,863.7	107.93	78,997,341.6	99.97%	263.06	87,487,121.1	98.51%	178.64	8,489,779.5	-84.42
Grand Total	798,960.0	217.43	2,182,180.2	105.74	79,023,406.2	100%	263.07	88,807,009.8	100%	177.27	9,783,603.6	-85.80

**Crop of Major Tea Producing & Exporting Countries**

Country	Month	For the Month			Up-to-Date		
		2019	2020	(+/-) 2019	2019	2020	(+/-) 2019
Bangladesh *	January	0.495	0.175	-0.320			
North India	January	0.0	0.0	0.0			
South India	January	14.2	16.0	1.8			
All India	January	14.2	16.0	1.8			
Kenya	January	48.4	53.6	5.2			
Sri Lanka	January	23.2	21.9	-1.3			

Country	Month	2018			2019		
		2018	2019	(+/-) 2018	2018	2019	(+/-) 2018
Bangladesh *	December	6.3	6.4	0.2	82.1	96.1	13.9
Malawi	December	6.4	5.0	-1.4	50.6	48.2	-2.4
North India	December	35.8	48.9	13.1	1113.7	1170.7	57.0
South India	December	19.7	18.1	-1.6	224.9	219.0	-5.9
All India	December	55.5	67.0	11.5	1338.6	1389.7	51.1
Sri Lanka	December	26.0	22.0	-4.0	303.9	300.1	-3.8
Kenya	December	51.8	50.7	-1.2	493.0	458.9	-34.2

\* Source: Bangladesh Tea Board's Monthly Statistical Bulletin

## General + Other Market(s) This/Last Week

**KOLKATA SALE 11- 11<sup>TH</sup> MARCH, 2020**

CTC Leaf & Dust: There was good demand at very irregular rates for most varieties depending on quality. M/s Hindustan Unilever operated. M/s Tata Consumer Products was quite selective. Western India segments operated on the nominal weight of brighter descriptions. Export accounts showed some interest on bolder Broken. Regional packeteers operated on plainer categories. Local buyers operated on the Doors.

Tea Category USC/KG	Broken	Fannings	Dusts
BEST ASSAMS	216-243	203-223	203-230
GOOD ASSAMS	176-189	176-189	176-189
MED ASSAMS	135-162	135-162	135-162
BEST DOOARS	189-203	182-196	169-182
GOOD- MED DOOARS	149-176	149-176	149-162
PLAINER DOOARS	95-135	95-135	101-135

**COONOOR SALE 11- 13<sup>TH</sup> MARCH 2020**

The slight surge witnessed in the modest quantity of the best liquoring teas for the last two weeks slipped marginally due to a fall away in quality but, however were absorbed at easier rates. The Good medium teas had a better enquiry in line with quality. The medium category teas continue to suffer subdued demand, whilst the plainer sorts met fair demand but at prices moving southwards. Major blender continued to be the mainstay whilst the upcountry buyer limited his purchases. Other internal were rather selective whilst the exporters were choosy on their buying and more price conscious.

CTC Leaf(USC/KG)	Best	Good	Better Med	Regular Med	Plain
	169-250	115-168	91-104	85-88	80-84

**MOMBASA SALE 11- 16<sup>TH</sup> & 17<sup>TH</sup> MARCH, 2020**

Fair general demand for the 200,103 packages (13,102,046.00 kilos) available at irregular rates closely following quality. 20.10% remained without bids.

CTC QUOTATIONS	BP1 – USC	PF1 – USC	PD – USC	D1 - USC
Best	210 – 650	240 – 330	226 – 340	228 – 324
Good	180 – 470	230 – 263	215 – 258	200 – 244
Good Medium	180 – 250	220 – 250	200 – 228	197 – 238
Medium	193 – 212	190 – 241	190 – 220	187 – 230
Lower Medium	106 – 182	110 – 196	100 – 186	100 – 190
Plainer	080 – 170	070 – 190	054 – 074	056 – 170

**SILIGURI** : Sale 11 Report not received.