

# NATIONAL BROKERS LIMITED

<http://nationalbrokersbd.com/>

Tea Auctioneers since 1948

## TEA MARKET REPORT – Sale 43 held on Monday 2<sup>nd</sup> March, 2020

CTC LEAF: 30,837 packages of Current Season teas on offer met with only a fair demand.

BROKENS: A nominal weight of clean Brokens met with quite a good demand and were generally firm to slightly dearer. The remainder which comprised of mostly end of season types were easier with some withdrawals. Plain and poor types followed a similar trend.

FANNINGS: A small weight of clean Fannings met with a fairly good demand but were generally easier following quality. The Medium varieties met with only a limited demand and generally declined by Tk.10/- and more. There were heavy withdrawals. Plain and poor types saw fair demand but at easier rates. However, there were also several withdrawals.

CTC DUST: 4,364 packages of Current Season teas on offer met with a fair demand. Good and Medium liquoring teas met with a good demand. Plain and BLF teas were easier by Tk.8/- to Tk.12/- with some withdrawals. Blenders were selective. Loose tea buyers were active. Good liquoring CDs met with a fair demand.

COMMENTS: This sale took place in Srimangal where buyers' participation was rather limited. Internal Loose tea buyers were active but major Blenders were rather selective. Withdrawals continued to be quite heavy. Dusts had a fair demand.

**Our catalogue (Sale 43): Avg: Tk 96.34, Sold 61.8% & ( Sale 42 ) Avg: Tk 106.50, sold 62.0%.**

### Quotations – This Week – (In Taka)

Brokens	This Week	Last Week	Fannings	This week	Last Week	Dust	This week	Last Week
Large	70-85	80-95	Best	160-180	185-195	PD	117-140	124-141
Medium	80-100	90-115	Good	130-145	145-165	RD	75-202	93-265
Small	90-110	105-130	Medium	85-95	100-115	D	105-220	90-250
Plain	70-80	80-90	Plain	70-80	80-90	CD	89-99	140-166
BLF	80-95 nom	95-130	BLF	80-95 nom	95-130	BLF	89-90	113

(BLF- Bought Leaf Factory)

Exchange Rates 2<sup>nd</sup> March, 2020 Sterling Pound: Tk. 106.6342 dollar: Tk. 83.6702

Top Prices – This Week

Category – CTC	Garden	Grade	Package	Price	Buyer(s)
Brokens	Zareen	BOP/GBOP	20	195/-	Ispahani
Fannings	Zareen	PF	10	195/-	Ispahani
Clonal Brokens	Clevedon	GBOP(S)	10	338/-	Sharif
Clonal Fannings	Clevedon	OF	20	325/-	Sharif
PD/RD (Incl Clone)	Clevedon	PD	10	262/-	Aftab
D (Incl Clone)	Clevedon	D	10	270/-	Shawon
CD (Incl Clone)	* Zareen	CD	10	200/-	Shawon

\* Above price(s) realised in

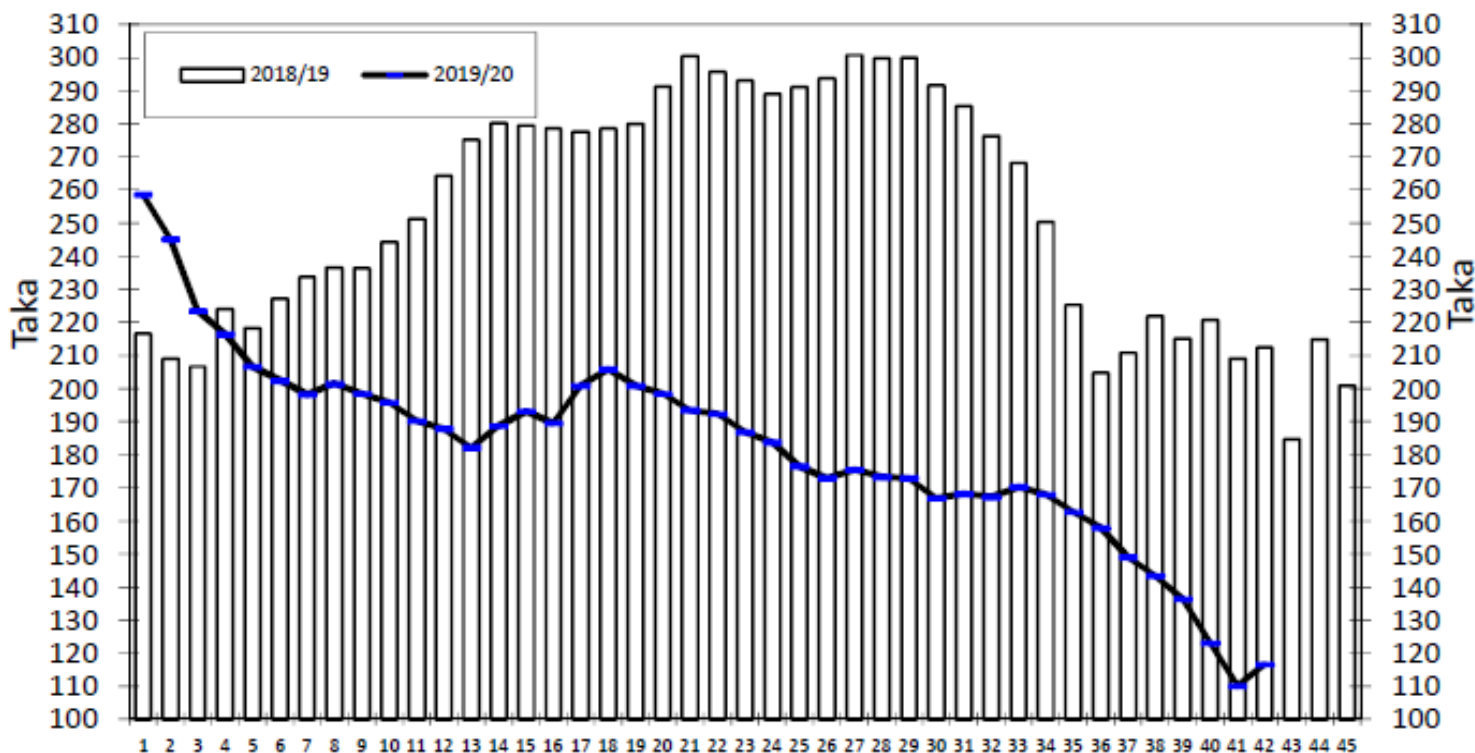
### Offerings

Type	This Sale ( Sale 43 )				Next Sale ( Sale 44 )			
	Season 2019-2020		Season 2018-2019		Season 2019-2020		Season 2018-2019	
	Packages	Qty/Kg	Packages	Qty/Kg	Packages	Qty/Kg	Packages	Qty/Kg
Leaf	30,837	1,686,670	4,367	238,194	36,579	2,000,871	14,202	775,167
Dust	4,364	239,436	726	39,811	8,342	456,307	2,217	121,734
Total	35,201	1,926,107	5,093	278,005	44,921	2,457,179	16,419	896,901

Chittagong Auction Average: Sale 42

Season 2019/20: Tk. 116.52 & Season 2018/19: Tk. 212.51

### Chittagong Auction Weekly Average



Weekly Sale

**Chittagong Auction Statistics - Sale: 42**

**Quantities of Teas Sold & Average Prices Realised**

Category	For the Sale				Up-to-Date Sale							
	Season 2018/19		Season 2019/20		Season 2018/19		Season 2019/20		(+/-) Season 2018/19			
	Qty. (Kg)	Taka	Qty. (Kg)	Taka	Qty. (Kg)	(%)	Taka	Qty. (Kg)	(%)	Taka	Qty. (Kg)	Taka
CTC LEAF	716,733.0	209.40	1,976,502.2	113.02	63,437,165.7	81.3%	262.34	70,012,067.2	82.1%	177.51	6,574,901.5	-84.83
CTC DUST	164,397.7	226.05	273,029.6	141.87	14,200,236.7	18.2%	271.10	14,900,653.5	17.5%	195.43	700,416.8	-75.67
Sub-Total	881,130.7	212.51	2,249,531.8	116.52	77,637,402.4	99.4%	263.94	84,912,720.7	99.5%	180.65	7,275,318.3	-83.29
ORTHODOX	0.0	0.00	0.0	0.00	1,013.5	0.001%	545.30	297.5	0.0%	236.77	-716.0	-308.53
Total	881,130.7	212.51	2,249,531.8	116.52	77,638,415.9	99.4%	263.97	84,913,018.2	99.5%	180.65	7,274,602.3	-83.32
GREEN TEA	0.0	0.00	74.0	1,000.00	18,662.5	0.02%	400.00	3,968.5	0.0%	527.45	-14,694.0	127.45
Total	881,130.7	212.51	2,249,605.8	116.55	77,657,078.4	99.5%	263.97	84,916,986.7	99.5%	180.67	7,259,908.3	-83.31
Other (s)	10,639.0	246.17	7,406.0	73.52	417,796.5	0.5%	209.06	388,618.9	0.5%	80.52	-29,177.6	-128.54
G.Total	891,769.7	212.91	2,257,011.8	116.41	78,074,874.9	100%	263.68	85,305,605.6	100%	180.21	7,230,730.7	-83.47

**Buyer Purchase Analysis**

Buyer	For the Sale				Up-to-Date Sale							
	Season 2018/19		Season 2019/20		Season 2018/19		Season 2019/20		(+/-) Season 2018/19			
	Qty. (Kg)	Taka	Qty. (Kg)	Taka	Qty. (Kg)	(%)	Taka	Qty. (Kg)	(%)	Taka	Qty. (Kg)	Taka
Export	2,743.2	289.20	189,274.5	83.01	26,064.6	0.03%	267.92	1,004,437.7	1.18%	89.64	978,373.1	-178.28
Internal	889,026.5	212.67	2,067,737.3	119.47	78,048,810.3	99.97%	263.68	84,301,167.9	98.82%	181.29	6,252,357.6	-82.39
Grand Total	891,769.7	212.91	2,257,011.8	116.41	78,074,874.9	100%	263.68	85,305,605.6	100%	180.21	7,230,730.7	-83.47

**Crop of Major Tea Producing & Exporting Countries**

Country	Month	For the Month			Up-to-Date		
		2019	2020	(+/-) 2019	2019	2020	(+/-) 2019
Bangladesh *	January	0.495	0.175	-0.320			
Sri Lanka	January	23.2	21.9	-1.3			

Country	Month	2018			2019		
		2018	2019	(+/-) 2018	2018	2019	(+/-) 2018
Bangladesh *	December	6.3	6.4	0.2	82.1	96.1	13.9
Malawi	December	6.4	5.0	-1.4	50.6	48.2	-2.4
North India	December	35.8	48.9	13.1	1113.7	1170.7	57.0
South India	December	19.7	18.1	-1.6	224.9	219.0	-5.9
All India	December	55.5	67.0	11.5	1338.6	1389.7	51.1
Sri Lanka	December	26.0	22.0	-4.0	303.9	300.1	-3.8
Kenya	December	51.8	50.7	-1.2	493.0	458.9	-34.2

\* Source: Bangladesh Tea Board's Monthly Statistical Bulletin

## General + Other Market(s) This/Last Week

**COONOOR SALE 09- 28<sup>TH</sup> FEBRUARY, 2020**

**DEMAND:-** A slight surge of good demand was witnessed on the best and good liquoring teas. The bolder grades in the medium category continued to meet good enquiry whilst the remainder met with restricted demand and substantial weight of teas remain unsold. The plainer teas met with fair enquiry but at easier levels. **MARKET:-** Brighter sorts dearer by Rs 3 -4 and sometimes more following quality. Select better Medium teas sold at dearer rates. Bolder grades in the medium category sold at dearer rates whilst the others were irregularly lower with larger weight of teas out listed with want of bids. The plainer teas were sold at easier rates by Rs 2-3. **PATTERN:-** Major Blender fairly active. Good support was witnessed from regional packeteers on the best and good liquoring teas. Other Internal buyers were selective. Exporters lent some support on the medium and plainer teas.

CTC Leaf(USC/KG)	Best	Good	Better Med	Regular Med	Plain
	180-263	102-174	93-101	89-91	83-87

**MOMBASA SALE 08- 24<sup>TH</sup> /25<sup>TH</sup> FEBRUARY 2020**

There was good demand at the start for the 208,298 packages (13,634,147.50 kilos) in the market but thereafter prices eased with some teas neglected (16.34%).

CTC QUOTATIONS	BP1 – USC	PF1 – USC	PD – USC	D1 - USC
Best	198 – 631	258 – 334	240 – 333	242 – 320
Good	170 – 280	240 – 290	238 – 278	227 – 292
Good Medium	190 – 236	242 – 272	230 – 268	235 – 268
Medium	196 – 223	212 – 252	210 – 249	205 – 238
Lower Medium	120 – 238	115 – 208	105 – 192	112 – 200
Plainer	090 – 176	055 – 188	045 – 172	050 – 176

**SILIGURI :** Sale 09 was dropped.

**KOLKATA:** Sale 09 Report not received.