

NATIONAL BROKERS LIMITED

<http://nationalbrokersbd.com/>

Tea Auctioneers since 1948

TEA MARKET REPORT – Sale 39 held on Tuesday 4th February, 2020

CTC LEAF: 58,542 packages of Current Season and 11 packages of Old Season teas on offer met with a slightly better demand at irregular rates. However, withdrawals were heavy.

BROKENS: A few clean BOPs attracted a fair demand and were about firm whilst all others particularly the poorer types met with a limited demand and sold at a discount. There were heavy withdrawals in these categories. The poorest types continued to meet with a fair demand but withdrawals were quite heavy.

FANNINGS: There were only a few clean Fannings available which met with a fairly strong demand and were generally firm to occasionally dearer. Medium types witnessed less demand and there were several withdrawals in this category. Plain varieties met with hardly any demand and mostly remained unsold

However, poorest met with some demand at easier rates but with heavy withdrawals.

CTC DUST: 8,571 packages of Current Season teas on offer met with a fair demand. Good and Medium liquoring teas met with a good demand. Plain and BLF teas were easier by Tk.8/- to Tk.10/- with several withdrawals. Blenders were active. Loose tea buyers were selective.

COMMENTS: Offerings again comprised of plain and end of season varieties which met with an irregular demand. Blenders were fairly active particularly for the cleaner lines. Internal Loose tea buyers lent a little more support this week.

Dusts met with a fair demand.

Our catalogue (Sale 39): Avg: Tk 146.15, Sold 46.5% & (Sale 38) Avg: Tk 145.65, sold 44.3%.

Quotations – This Week – (In Taka)

Brokens	This Week	Last Week	Fannings	This week	Last Week	Dust	This week	Last Week
Large	120-130 nom	123-130 nom	Best	185-200 nom	180-195 nom	PD	117-208	215-217
Medium	120-135	125-140	Good	155-165	160-170	RD	110-255	108-223
Small	130-145	135-150	Medium	125-135	130-140	D	112-270	113-254
Plain	90-115	90-110	Plain	90-115	90-110	CD	151-276	127-276
BLF	95-130	100-120	BLF	95-130	100-120	BLF	117-139	127-143

(BLF- Bought Leaf Factory)

Exchange Rates 4th February, 2020 Sterling Pound: Tk.108.2509, dollar: Tk. 83.6702

Top Prices – This Week

Category – CTC	Garden	Grade	Package	Price	Buyer(s)
Brokens	* Monipur	GBOP	15	227/-	Kalam
Fannings	* Silloah	PF	20	218/-	ACME/BC
Clonal Brokens	Kaiyacherra Dalu	GBOP	11	307/-	Nishita
Clonal Fannings	Clevedon	OF	10	282/-	Nishita
PD/RD (Incl Clone)	* Madhupur	RD	30	255/-	TK/AKT
D (Incl Clone)	* Daragaon	D	20	270/-	Danish/AKT
CD (Incl Clone)	* Madhupur	CD(BT1)	10	292/-	BTS

* Above price(s) realised in our catalogue

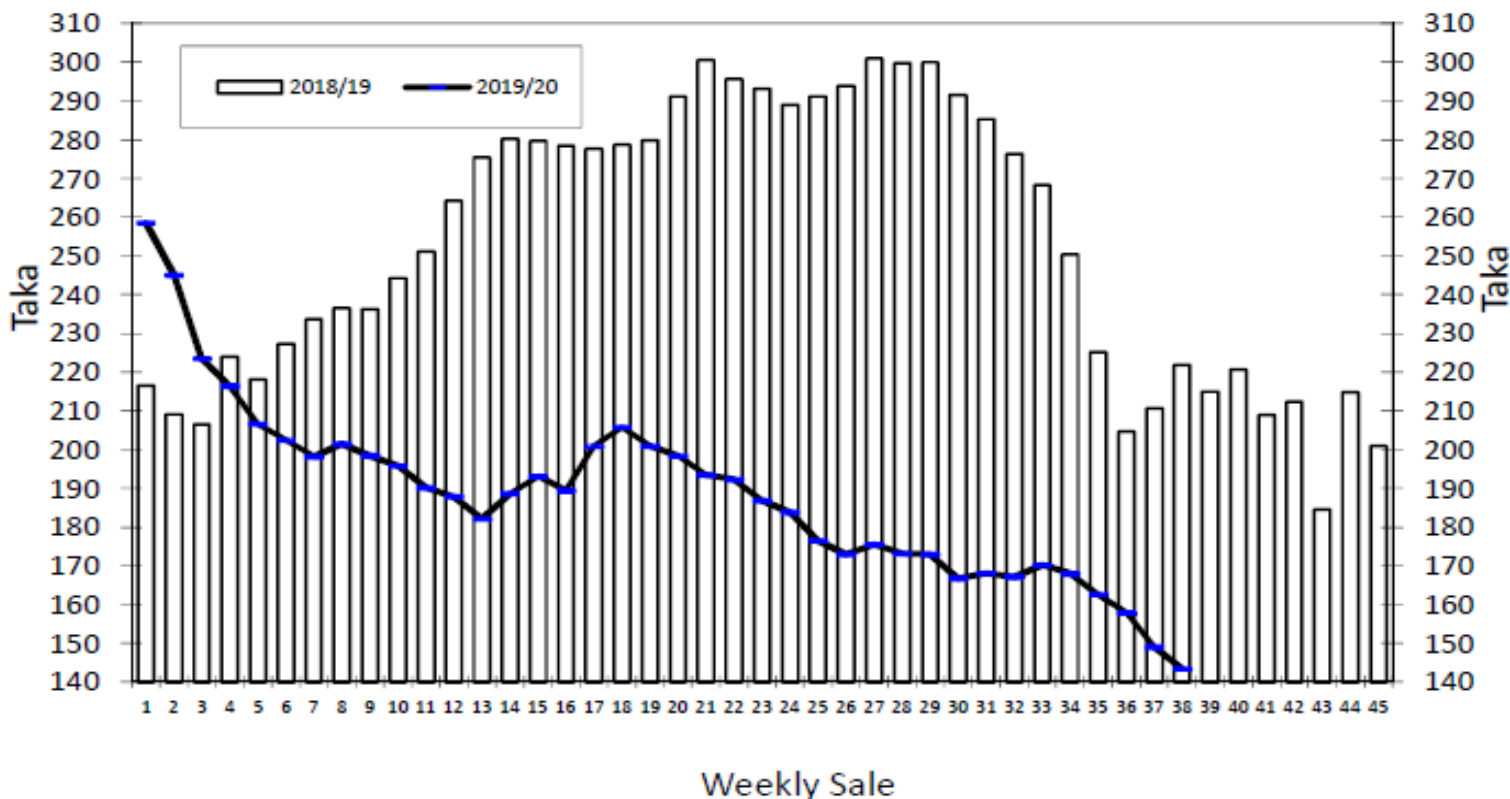
Offerings

Type	This Sale (Sale 39)				Next Sale (Sale 40)			
	Season 2019-2020		Season 2018-2019		Season 2019-2020		Season 2018-2019	
	Packages	Qty/Kg	Packages	Qty/Kg	Packages	Qty/Kg	Packages	Qty/Kg
Leaf	58,553	3,191,139	33,928	1,851,931	50,283	2,710,254	31,765	1,734,369
Dust	8,571	467,120	7,066	387,776	8,243	444,298	7,184	392,246
Total	67,124	3,658,258	40,994	2,239,707	58,526	3,154,551	38,949	2,126,615

Chittagong Auction Average: Sale 38

Season 2019/20: Tk. 143.43 & Season 2018/19: Tk. 221.77

Chittagong Auction Weekly Average



Chittagong Auction Statistics - Sale: 38

Quantities of Teas Sold & Average Prices Realised

Category	For the Sale				Up-to-Date Sale							
	Season 2018/19		Season 2019/20		Season 2018/19		Season 2019/20		Season 2018/19		Season 2019/20	
	Qty. (Kg)	Taka	Qty. (Kg)	Taka	Qty. (Kg)	(%)	Taka	Qty. (Kg)	(%)	Taka	Qty. (Kg)	Taka
CTC LEAF	1,742,267.5	218.05	969,267.0	134.31	59,067,241.7	81.3%	266.04	63,630,496.5	81.6%	183.62	4,563,254.8	-82.42
CTC DUST	292,721.8	243.91	214,243.7	184.71	13,157,618.3	18.1%	275.01	13,919,615.6	17.9%	198.17	761,997.3	-76.84
Sub-Total	2,034,989.3	221.77	1,183,510.7	143.43	72,224,860.0	99.5%	267.68	77,550,112.1	99.5%	186.23	5,325,252.1	-81.44
ORTHODOX	0.0	0.00	0.0	0.00	1,013.5	0.0%	545.30	297.5	0.0%	236.77	-716.0	-308.53
Total	2,034,989.3	221.77	1,183,510.7	143.43	72,225,873.5	99.5%	267.68	77,550,409.6	99.5%	186.23	5,324,536.1	-81.45
GREEN TEA	0.0	0.00	0.0	0.00	0.0	0.0%	0.00	3,721.0	0.0%	496.02	3,721.0	496.02
Total	2,034,989.3	221.77	1,183,510.7	143.43	72,225,873.5	99.5%	267.68	77,554,130.6	99.5%	186.25	5,328,257.1	-81.43
Other (s)	9,324.5	163.65	1,645.5	71.33	389,093.0	0.5%	209.52	379,569.0	0.5%	80.49	-9,524.0	-129.03
G.Total	2,044,313.8	221.50	1,185,156.2	143.33	72,614,966.5	100%	267.37	77,933,699.6	100%	185.73	5,318,733.1	-81.64

Buyer Purchase Analysis

Buyer	For the Sale				Up-to-Date Sale							
	Season 2018/19		Season 2019/20		Season 2018/19		Season 2019/20		Season 2018/19		Season 2019/20	
	Qty. (Kg)	Taka	Qty. (Kg)	Taka	Qty. (Kg)	(%)	Taka	Qty. (Kg)	(%)	Taka	Qty. (Kg)	Taka
Export	0.0	0.00	38,316.0	80.58	23,321.4	0.03%	265.41	353,196.2	0.45%	99.28	329,874.8	-166.14
Internal	2,044,313.8	221.50	1,146,840.2	145.43	72,591,645.1	99.97%	267.37	77,580,503.4	99.55%	186.13	4,988,858.3	-81.24
Grand Total	2,044,313.8	221.50	1,185,156.2	143.33	72,614,966.5	100%	267.37	77,933,699.6	100%	185.73	5,318,733.1	-81.64

Crop of Major Tea Producing & Exporting Countries

Country	Month	For the Month			Up-to-Date		
		2018	2019	(+/-) 2018	2018	2019	(+/-) 2018
Bangladesh *	December	6.3	6.4	0.2	82.1	96.1	13.9
Malawi	December	6.4	5.0	-1.4	50.6	48.2	-2.4
North India	December	35.8	48.9	13.1	1113.7	1170.7	57.0
South India	December	19.7	18.1	-1.6	224.9	219.0	-5.9
All India	December	55.5	67.0	11.5	1338.6	1389.7	51.1
Sri Lanka	November	24.7	21.9	-2.8	277.6	278.1	0.5
Kenya	December	51.8	50.7	-1.2	493.0	458.9	-34.2

* Source: Bangladesh Tea Board's Monthly Statistical Bulletin

General + Other Market(s) This/Last Week

KOLKATA SALE 05- 28TH /29TH & 31ST JANUARY, 2020

CTC: There was good demand for better liquoring Assam descriptions at irregularly easier rates. The remainder met with fair demand at lower levels. Western India segments were selective on brighter descriptions. Regional packeteers operated, primarily on plainer varieties including plainest Dooars. Local buyers were active on clean, well-made invoices and the Dooars.

Tea Category USC/KG	Brokens	Fannings	Dusts
BEST ASSAMS	267-295	253-281	281-310
GOOD ASSAMS	218-246	211-232	239-267
MED ASSAMS	183-211	183-204	183-218
BEST DOOARS	239-253	232-246	211-225
GOOD- MED DOOARS	183-211	183-211	176-204
PLAINER DOOARS	113-148	113-148	113-148

SILIGURI SALE 05- 29TH JANUARY, 2020

Fair general demand. Levels eased irregularly with poorer sorts neglected. DUST: Good demand at easier levels. Internal- Main stay, Blenders and Exporter- Selective.

Quotations (USC/KG)	Brokens(USC/kg)	Fannings(USC/kg)	Dust (USC/kg)
GOOD / BEST	211-274	204-253	183-246
MEDIUM / BETTER MEDIUM	162-204	148-197	155-183
COMMON / BLF	99-155	99-148	99-148

COONOOR SALE 05- 1ST FEBRUARY, 2020

Marginally better demand was seen this week. The best of the liquoring sorts saw good demand at prices appreciating. The good and the better medium teas absorption was better at lower levels to last. The medium categories met with fair demand, however the corresponding bolder and Fanning's met good demand. The regional buyers improved buying on the brighter sorts but were very selective and price sensitive on other categories. The other internal buyers continued to be choosy. The Exporters buying slightly improved on the medium and plainer teas at declined prices

CTC Leaf(USC/KG)	Best	Good	Better Med	Regular Med	Plain
	183-239	113-166	103-110	99-102	90-97

MOMBASA SALE 04- 27TH & 28TH JANUARY, 2020

There was good general demand for the 212,779 packages (13,867,090.00 kilos) available in the market; however, 12.61% received no bids.

CTC QUOTATIONS	BP1 – USC	PF1 – USC	PD – USC	D1 – USC
Best	240 – 650	282 – 342	272 – 332	275 – 352
Good	160 – 328	274 – 305	265 – 300	280 – 298
Good Medium	190 – 242	274 – 294	244 – 286	260 – 290
Medium	196 – 252	200 – 283	238 – 267	220 – 274
Lower Medium	122 – 198	140 – 222	108 – 208	110 – 208
Plainer	093 – 172	075 – 188	070 – 180	090 – 203