

NATIONAL BROKERS LIMITED

<http://nationalbrokersbd.com/>

Tea Auctioneers since 1948

TEA MARKET REPORT – Sale 38 held on Monday 27th January, 2020

CTC LEAF: 36,107 packages of Current Season teas on offer met with a limited demand with heavy withdrawals continuing.

BROKENS: A limited quantity of clean BOPs met with a fair demand and sold at slightly easier rates but the bulk of the offerings which constituted of inferior quality met with a very restricted demand and only a few lines sold at a discount over last particularly the Medium varieties. Poorest met with a fair demand but there were again heavy withdrawals.

FANNINGS: A limited weight of clean Fannings met with a fair demand and sold fairly well in line with quality. All other types saw a much less demand and there were heavier withdrawals. Poor types witnessed some interest at lower rates.

CTC DUST: 6,727 packages of Current Season teas on offer met with a fair demand. Good liquoring teas

were a firm market. Medium plain and BLF teas were easier by Tk.8/- toTk.12/- with more withdrawals compared to last. Blenders were fairly active. Loose tea buyers were very selective.

COMMENTS: This sale took place in Srimangal where offerings comprised of a heavier weight of teas. Consequently, there was a more discriminating demand whereby cleaner teas sold reasonably well but all others were neglected. Blenders again lent fair support but Loose tea buyers were a weak feature.

Dusts met with less demand.

Our catalogue (Sale 38): Avg: Tk 145.92, Sold 43.6% & (Sale 37) Avg: Tk 162.25, sold 39.3%.

Quotations – This Week – (In Taka)

Brokens	This Week	Last Week	Fannings	This week	Last Week	Dust	This week	Last Week
Large	123-130 nom	130-140 nom	Best	180-195 nom	185-195	PD	215-217	137-233
Medium	125-140	130-150	Good	160-170	160-175	RD	108-223	110-250
Small	135-150	135-155	Medium	130-140	135-145	D	113-254	135-259
Plain	90-110	90-115	Plain	90-110	90-115	CD	127-276	175-269
BLF	100-120	105-130	BLF	100-120	105-130	BLF	127-143	148

(BLF- Bought Leaf Factory)

Exchange Rates 27th January, 2020 Sterling Pound: Tk.108.6318, dollar: Tk. 83.6702

Top Prices – This Week

Category – CTC	Garden	Grade	Package	Price	Buyer(s)
Brokens	* Madhupur	GBOP	20	228/-	GTH
Fannings	* Chandpur Belgaon	OF(S)	10	225/-	GTH
Clonal Brokens	Kaiyacherra Dalu	GBOP	22	300/-	AKT/Padma
Clonal Fannings	Kaiyacherra Dalu	OF	10	268/-	Shati
PD/RD (Incl Clone)	Clevedon	RD(C)	10	243/-	Alamin
D (Incl Clone)	* Daragaon	D	20	254/-	AKT
CD (Incl Clone)	* Madhupur	CD(C)BT1	10	276/-	Alamin

* Above price(s) realised in our catalogue

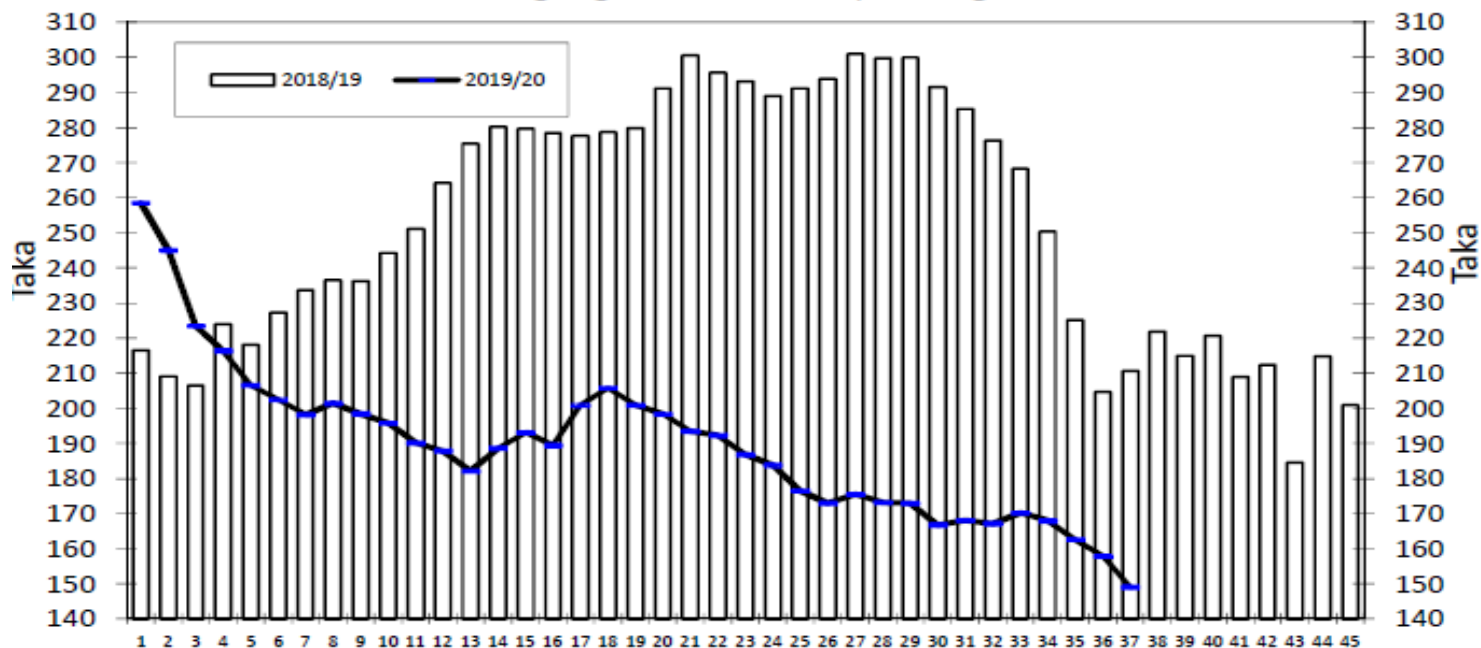
Offerings

Type	This Sale (Sale 38)				Next Sale (Sale 39)			
	Season 2019-2020		Season 2018-2019		Season 2019-2020		Season 2018-2019	
	Packages	Qty/Kg	Packages	Qty/Kg	Packages	Qty/Kg	Packages	Qty/Kg
Leaf	36,107	1,977,025	40,530	2,215,775	58,511	3,153,743	33,928	1,851,931
Dust	6,727	369,374	6,988	383,576	8,613	464,241	7,066	387,776
Total	42,834	2,346,399	47,518	2,599,351	67,124	3,617,984	40,994	2,239,707

Chittagong Auction Average: Sale 37

Season 2019/20: Tk. 149.05, Season 2018/19: Tk. 210.74

Chittagong Auction Weekly Average



Weekly Sale

Chittagong Auction Statistics - Sale: 37
Quantities of Teas Sold & Average Prices Realised

Category	For the Sale				Up-to-Date Sale							
	Season 2018/19		Season 2019/20		Season 2018/19		Season 2019/20		(+/-) Season 2018/19			
	Qty. (Kg)	Taka	Qty. (Kg)	Taka	Qty. (Kg)	(%)	Taka	Qty. (Kg)	(%)	Taka	Qty. (Kg)	Taka
CTC LEAF	1,895,110.0	205.54	1,558,361.0	140.43	57,324,974.2	81.2%	267.50	62,661,229.5	81.6%	184.38	5,336,255.3	-83.12
CTC DUST	311,587.3	242.40	362,203.9	186.11	12,864,896.5	18.2%	275.72	13,705,371.9	17.9%	198.38	840,475.4	-77.34
Sub-Total	2,206,697.3	210.74	1,920,564.9	149.05	70,189,870.7	99.5%	269.01	76,366,601.4	99.5%	186.90	6,176,730.7	-82.11
ORTHODOX	0.0	0.00	0.0	0.00	1,013.5	0.0%	545.30	297.5	0.0%	236.77	-716.0	-308.53
Total	2,206,697.3	210.74	1,920,564.9	149.05	70,190,884.2	99.5%	269.01	76,366,898.9	99.5%	186.90	6,176,014.7	-82.12
GREEN TEA	0.0	0.00	0.0	0.00	0.0	0.0%	0.00	3,721.0	0.0%	496.02	3,721.0	496.02
Total	2,206,697.3	210.74	1,920,564.9	149.05	70,190,884.2	99.5%	269.01	76,370,619.9	99.5%	186.91	6,179,735.7	-82.10
Other (s)	1,792.5	173.24	0.0	0.00	379,768.5	0.5%	210.65	377,923.5	0.5%	80.53	-1,845.0	-130.12
G.Total	2,208,489.8	210.71	1,920,564.9	149.05	70,570,652.7	100%	268.70	76,748,543.4	100%	186.39	6,177,890.7	-82.31

Buyer Purchase Analysis

Buyer	For the Sale				Up-to-Date Sale							
	Season 2018/19		Season 2019/20		Season 2018/19		Season 2019/20		(+/-) Season 2018/19			
	Qty. (Kg)	Taka	Qty. (Kg)	Taka	Qty. (Kg)	(%)	Taka	Qty. (Kg)	(%)	Taka	Qty. (Kg)	Taka
Export	0.0	0.00	61,564.0	87.10	23,321.4	0.03%	265.41	314,880.2	0.41%	101.55	291,558.8	-163.86
Internal	2,208,489.8	210.71	1,859,000.9	151.10	70,547,331.3	99.97%	268.70	76,433,663.2	99.59%	186.74	5,886,331.9	-81.96
Grand Total	2,208,489.8	210.71	1,920,564.9	149.05	70,570,652.7	100%	268.70	76,748,543.4	100%	186.39	6,177,890.7	-82.31

Crop of Major Tea Producing & Exporting Countries

Country	Month	For the Month			Up-to-Date		
		2018	2019	(+/-) 2018	2018	2019	(+/-) 2018
Bangladesh *	December	6.3	6.4	0.2	82.1	96.1	13.9
Malawi	December	6.4	5.0	-1.4	50.6	48.2	-2.4
North India	December	35.8	48.9	13.1	1113.7	1170.7	57.0
South India	December	19.7	18.1	-1.6	224.9	219.0	-5.9
All India	December	55.5	67.0	11.5	1338.6	1389.7	51.1
Sri Lanka	November	24.7	21.9	-2.8	277.6	278.1	0.5
Kenya	November	45.6	45.1	-0.5	441.2	408.2	-33.0

* Source: Bangladesh Tea Board's Monthly Statistical Bulletin

General + Other Market(s) This/Last Week

KOLKATA SALE 04 – 21st, 22nd & 24th JANUARY, 2020

CTC: There was good demand for good liquoring Assams and those of good make and these descriptions sold at barely steady to easier rates. Plainer liquoring and browner Assams, sold at lower levels. Clean, black and better Dooars sold at irregular levels around last. The remainder was irregular, closely following quality. M/s Tata Global Beverages was active good and medium Assams and plainest Dooars in the leaf sale. M/s Hindustan Unilever operated in the leaf sale but with lower interest to last. Export accounts extended useful support on larger Brokens, Fannings and well-made Dusts.

Tea Category USC/KG	Brokens	Fannings	Dusts
BEST ASSAMS	266-294	266-280	294-308
GOOD ASSAMS	224-252	224-252	252-294
MED ASSAMS	182-210	182-210	196-238
BEST DOOARS	252-266	252-266	210-224
GOOD- MED DOOARS	182-224	182-224	175-203
PLAINER DOOARS	112-154	112-154	112-154

SILIGURI SALE 04- 22nd JANUARY, 2020

LEAF: Good general demand. Levels across all segments eased irregularly in line with quality and saw some withdrawals. DUST: Followed a similar trend to leaf. Internal- Active, Blenders- Operated. Exporter- Selective.

Quotations (USC/KG)	Brokens(USC/kg)	Fannings(USC/kg)	Dust (USC/kg)
GOOD / BEST	217-280	203-273	196-245
MEDIUM / BETTER MEDIUM	161-203	161-189	154-182
COMMON / BLF	98-154	98-154	98-147

COONOOR SALE 3- 24th JANUARY, 2020

There was no change in the depleting demand pattern for the continuous third week. The best of the liquoring sorts met with fair demand. The good and the better medium teas saw some quantum of withdrawals due to want of bids. The medium category bolder and Fanning's were irregular with select lots appreciating whilst others were steady. The regional buyers were very selective and price sensitive. The other Internal buyers operated only on select lines. The Exporters supported on the medium and plainer teas at easier levels.

CTC Leaf(USC/KG)	Best	Good	Better Med	Regular Med	Plain
	168-210	115-157	105-112	98-104	91-97

MOMBASA SALE 03- 20th & 21st JANUARY, 2020

Good demand prevailed with improved absorption for the 173,200 packages (11,406,750.50 kilos) in the market and only 6.54% remained unsold.

CTC QUOTATIONS	BP1 – USC	PF1 – USC	PD – USC	D1 – USC
Best	240 – 618	275 – 332	272 – 346	280 – 354
Good	210 – 316	270 – 295	268 – 295	270 – 300
Good Medium	205 – 255	252 – 284	255 – 288	254 – 290
Medium	190 – 227	230 – 268	238 – 266	214 – 277
Lower Medium	124 – 194	155 – 226	100 – 210	114 – 208
Plainer	105 – 174	079 – 190	070 – 184	090 – 170