

NATIONAL BROKERS LIMITED

<http://nationalbrokersbd.com/>

Tea Auctioneers since 1948

TEA MARKET REPORT – Sale 35 held on Tuesday 7th January, 2020

CTC LEAF: 72,213 packages of Current Season and 246 packages of Old Season teas on offer continued to meet with a restricted demand.

BROKENS: There was only some clean Invoices available which met with a fairly good demand and generally sold well around last levels but all others met with much less demand which resulted in heavy withdrawals.

FANNINGS: A small weight of clean liquoring Fannings met with a strong demand and were mostly dearer but Mediums saw much less demand and prices declined further with heavier withdrawals. Plain and poorer types saw only a limited demand.

CTC DUST: 9,871 packages of Current Season and 10 packages of Old Season teas on offer met with a good demand. Select few lines of well made good liquoring teas met with good competition and advanced upto

Tk.12/- . Other good liquoring teas also sold well and were dearer by Tk.5/- to Tk.7/- following quality. Medium varieties sold around last levels. However, plain and BLF teas were an easier market and also witnessed some withdrawals. Blenders lent strong support with fair interest from the Loose tea buyers.

COMMENTS: A larger weight was offered this week which comprised of more plain varieties. As a result, majority of the offerings were withdrawn without bids from the buyers. Blenders lent good support for good and clean liquoring varieties whilst there was only limited interest from the Loose tea buyers.

Dusts sold well.

Our catalogue (Sale 35): Avg: Tk 180.31, Sold 44.1% & (Sale 34) Avg: Tk 178.42, sold 54.6%.

Quotations – This Week – (In Taka)

Brokens	This Week	Last Week	Fannings	This week	Last Week	Dust	This week	Last Week
Large	140-150 nom	150-155	Best	195-205	200-210	PD	155-264	158-240
Medium	155-170	160-175	Good	175-185	180-195	RD	85-273	108-255
Small	160-175	165-180	Medium	155-165	160-175	D	142-267	133-259
Plain	100-130	110-135	Plain	110-130	110-135	CD	135-266	185-258
BLF	110-140	110-135	BLF	110-140	110-135	BLF	103-145	108-134

(BLF- Bought Leaf Factory)

Exchange Rates 7th January, 2020 Sterling Pound: Tk.. 109.6178, dollar: Tk. 83.6702

Top Prices – This Week

Category – CTC	Garden	Grade	Package	Price	Buyer(s)
Brokens	* Madhupur / Zareen	GBOP	10/10	231/-	LC/AKT
Fannings	* Chandpur Belgaon	OFS	10	250/-	Kamona
Clonal Brokens	Kaiyacherra Dalu	GBOP	20	336/-	AKT/Three Star
Clonal Fannings	Clevedon	OF	10	309/-	Ziku
PD/RD (Incl Clone)	* Daragaon	RD	20	273/-	TK/Danish
D (Incl Clone)	Madhupur	D(BT1)	10	278/-	Shawon
CD (Incl Clone)	* Amrail	CD	10	266/-	Ispahani

* Above price(s) realised in our catalogue

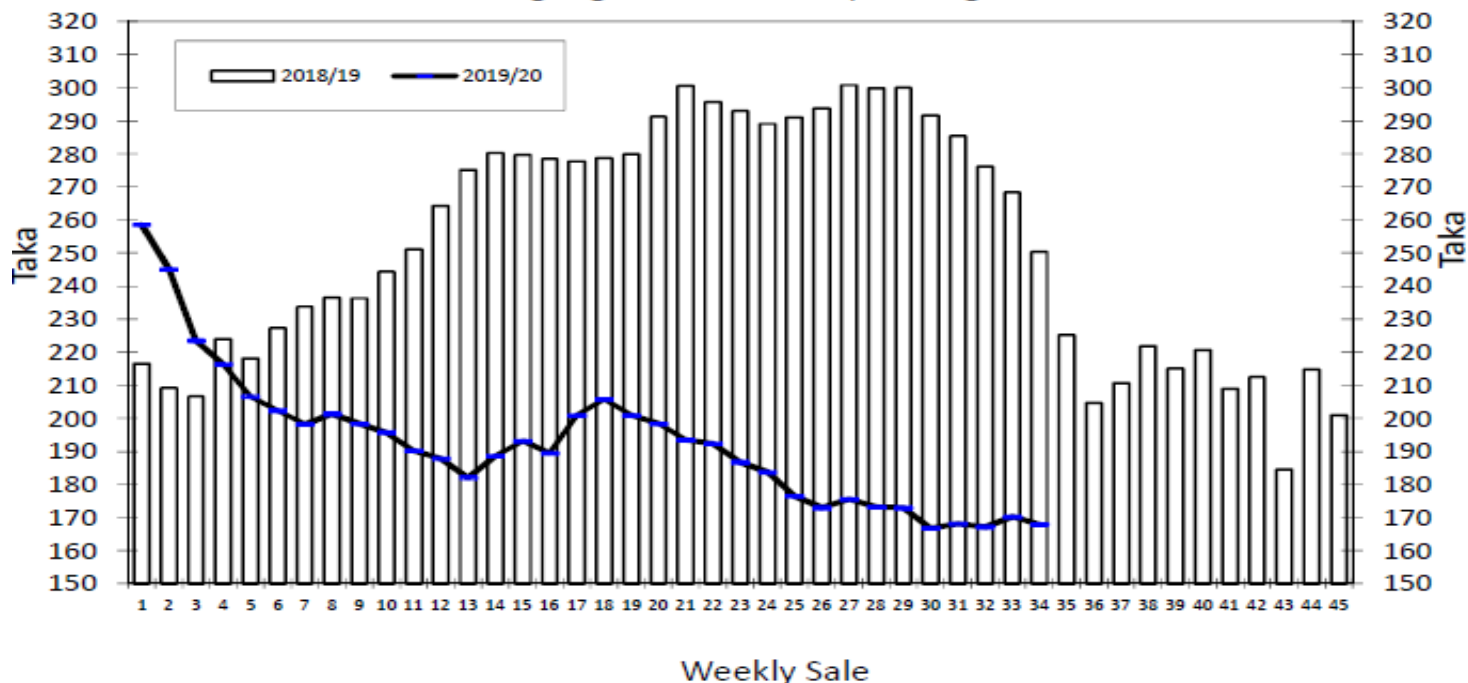
Offerings

Type	This Sale (Sale 35)				Next Sale (Sale 36)			
	Season 2019-2020		Season 2018-2019		Season 2019-2020		Season 2018-2019	
	Packages	Qty/Kg	Packages	Qty/Kg	Packages	Qty/Kg	Packages	Qty/Kg
Leaf	72,459	3,968,313	51,370	2,813,208	57,514	3,151,192	48,358	2,647,207
Dust	9,881	542,407	9,447	519,221	8,949	490,316	7,684	422,100
Total	82,340	4,510,721	60,817	3,332,429	66,463	3,641,508	56,042	3,069,306

Chittagong Auction Average: Sale 34

Season 2019/20: Tk. 168.00, Season 2018/19: Tk. 250.39

Chittagong Auction Weekly Average



Chittagong Auction Statistics - Sale: 34

Quantities of Teas Sold & Average Prices Realised

Category	For the Sale				Up-to-Date Sale							
	Season 2018/19		Season 2019/20		Season 2018/19		Season 2019/20		(+/-) Season 2018/19			
	Qty. (Kg)	Taka	Qty. (Kg)	Taka	Qty. (Kg)	(%)	Taka	Qty. (Kg)	(%)	Taka	Qty. (Kg)	Taka
CTC LEAF	1,306,980.7	246.51	1,358,881.5	162.22	52,470,348.7	81.1%	273.22	57,502,261.5	81.7%	187.53	5,031,912.8	-85.70
CTC DUST	312,155.6	266.63	244,959.7	200.10	11,890,564.2	18.4%	278.21	12,534,252.1	17.8%	199.10	643,687.9	-79.11
Sub-Total	1,619,136.3	250.39	1,603,841.2	168.00	64,360,912.9	99.5%	274.14	70,036,513.6	99.5%	189.60	5,675,600.7	-84.55
DRTHODOX	0.0	0.00	0.0	0.00	1,013.5	0.0%	545.30	297.5	0.0%	236.77	-716.0	-308.53
Total	1,619,136.3	250.39	1,603,841.2	168.00	64,361,926.4	99.5%	274.15	70,036,811.1	99.5%	189.60	5,674,884.7	-84.55
GREEN TEA	0.0	0.00	74.5	1,000.00	0.0	0.0%	0.00	3,646.5	0.0%	485.73	3,646.5	485.73
Total	1,619,136.3	250.39	1,603,915.7	168.04	64,361,926.4	99.5%	274.15	70,040,457.6	99.5%	189.61	5,678,531.2	-84.54
Other (s)	0.0	0.00	1,082.0	80.00	347,804.5	0.5%	217.59	363,845.9	0.5%	79.67	16,041.4	-137.92
G.Total	1,619,136.3	250.39	1,604,997.7	167.98	64,709,730.9	100%	273.84	70,404,303.5	100%	189.05	5,694,572.6	-84.80

Buyer Purchase Analysis

Buyer	For the Sale				Up-to-Date Sale							
	Season 2018/19		Season 2019/20		Season 2018/19		Season 2019/20		(+/-) Season 2018/19			
	Qty. (Kg)	Taka	Qty. (Kg)	Taka	Qty. (Kg)	(%)	Taka	Qty. (Kg)	(%)	Taka	Qty. (Kg)	Taka
Export	6,588.7	274.41	13,373.5	97.29	22,772.2	0.04%	265.66	185,719.2	0.26%	104.97	162,947.0	-160.69
Internal	1,612,547.6	250.29	1,591,624.2	168.58	64,686,958.7	99.96%	273.85	70,218,584.3	99.74%	189.27	5,531,625.6	-84.58
Grand Total	1,619,136.3	250.39	1,604,997.7	167.98	64,709,730.9	100%	273.84	70,404,303.5	100%	189.05	5,694,572.6	-84.80

Crop of Major Tea Producing & Exporting Countries

Country	Month	For the Month			Up-to-Date		
		2018	2019	(+/-) 2018	2018	2019	(+/-) 2018
Bangladesh *	November	9.1	10.3	1.2	75.9	89.6	13.8
North India	November	101.5	117.6	16.1	1078.0	1121.7	43.7
South India	November	19.6	21.8	2.2	205.1	200.9	-4.2
All India	November	121.1	139.4	18.3	1283.1	1322.6	39.5
Kenya	October	49.3	46.3	-3.0	395.5	363.1	-32.4
Malawi	October	2.2	2.3	0.1	42.8	42.0	-0.8
Sri Lanka	October	29.1	20.8	-8.3	252.7	253.7	1.0

* Source: Bangladesh Tea Board's Monthly Statistical Bulletin

General + Other Market(s) This/Last Week

SILIGURI SALE 01- 2ND JANUARY, 2020

Good demand. Levels across all segments eased in line with quality. DUST: Good demand at irregular and easier levels. Internal- Active, Blenders- Operated. Exporter- Selective.

Quotations (USC/KG)	Brokens(USC/kg)	Fannings(USC/kg)	Dust (USC/kg)
GOOD / BEST	225-309	218-295	204-267
MEDIUM / BETTER MEDIUM	162-218	162-211	162-197
COMMON / BLF	113-155	113-155	113-155

COONOOR SALE 01- 3RD JANUARY, 2020

CTC: 2020 opened with fair demand with slightly higher volumes on offer due to extended closing with regard to the holidays for the festive season. However, the brighter liquoring sorts saw an upward trend in price movement and sold well especially the flavoured lines. Better medium, medium bolder grades and Fannings saw an inclined demand. Other grades in this category saw fair demand. Plainer teas too, met with selective demand, particularly on the sorts with blacker appearance Brighter liquoring sorts up by Rs 3-5, select few lines fetched higher. Better Medium and Medium Bolder grades and Fannings were dearer by Rs 4-5. Other grades in this category were sold at barely steady levels. All grades of plainer teas sold at irregular levels, except for the blacker varieties which fetched firm to dearer rates. Major Blender was the mainstay of the market with regional buyers being choosy. The other Internal buyers lent useful fair support. The Exporters were selective/rather subdued.

CTC Leaf(USC/KG)	Best	Good	Better Med	Regular Med	Plain
	162-207	127-160	117-125	99-115	87-97

KOLKATA/MOMBASA: Report not received.