

NATIONAL BROKERS LIMITED

<http://nationalbrokersbd.com/>

Tea Auctioneers since 1948

TEA MARKET REPORT – Sale 31 held on Tuesday 10th December, 2019

CTC LEAF: 68,680 packages of Current Season and 186 packages of Old Season teas on offer met with fair demand.

BROKENS: A small weight of good Brokens on offer met with a good demand and were about steady. Medium varieties met with a fair demand but eased slightly whilst larger Brokens were irregular. Poor varieties were again a difficult market and withdrawals were heavy.

FANNINGS: Good liquoring varieties on offer were a good market and were firm to slightly dearer. Medium types witnessed a fair demand and were a little easier on last. Plain and poor types were again an easier market with heavy withdrawals.

CTC DUST: 9,695 packages of Current Season teas on offer met with an improved demand. The best liquoring teas met with a good competition and

advanced by Tk.10/- to 15/- following quality. Good teas were fully firm to slightly dearer. Medium teas had fair demand. Brownish, plainer liquoring BLF teas were an easier market and witnessed fair withdrawals. Blenders lent strong support with fair interest from the Loose teas buyers.

COMMENTS: It was evident throughout the sale that the market was closely following quality. Blenders lent good support for good liquoring varieties along with fair interest from the Loose tea buyers. Withdrawals continued to be heavy for plain and poor types particularly in the reprinted section of the catalogue. CDs were a strong market.

Our catalogue (Sale 31): Avg: Tk 178.22, Sold 59.2% & (Sale 30) Avg: Tk 183.45, sold 56.8%.

Quotations – This Week – (In Taka)

Brokens	This Week	Last Week	Fannings	This week	Last Week	Dust	This week	Last Week
Large	158-178	150-160	Best	195-205	195-200	PD	150-240	166-237
Medium	165-175	160-170	Good	184-194	182-192	RD	90-280	100-272
Small	170-180	165-175	Medium	165-175	165-175	D	115-270	95-250
Plain	100-120	105-115	Plain	100-120	105-115	CD	120-290	135-288
BLF	95-120	100-115	BLF	95-120	100-115	BLF	90-195	106-175

(BLF- Bought Leaf Factory)

Exchange Rates 10TH December, 2019 Sterling Pound: Tk.. 109.4147, dollar: Tk. 83.6702

Top Prices – This Week

Category – CTC	Garden	Grade	Package	Price	Buyer(s)
Brokens	Madhupur	GBOP	20	295/-	AKT/Ispahani
Fannings	* Madhupur	PF	10	270/-	Nishat
Clonal Brokens	Kaiyacherra Dalu	GBOP	10	351/-	Hoque
Clonal Fannings	Kaiyacherra Dalu /Clevedon	OF	31/20	310/-	PA/Nishat/Kamona
PD/RD (Incl Clone)	Clevedon	PD(C)	10	285/-	Sam
D (Incl Clone)	* Madhupur	D(BT1)	10	270/-	Ali
CD (Incl Clone)	* Madhupur	CD(BT1)	10	290/-	Pop(D)

* Above price(s) realised in our catalogue

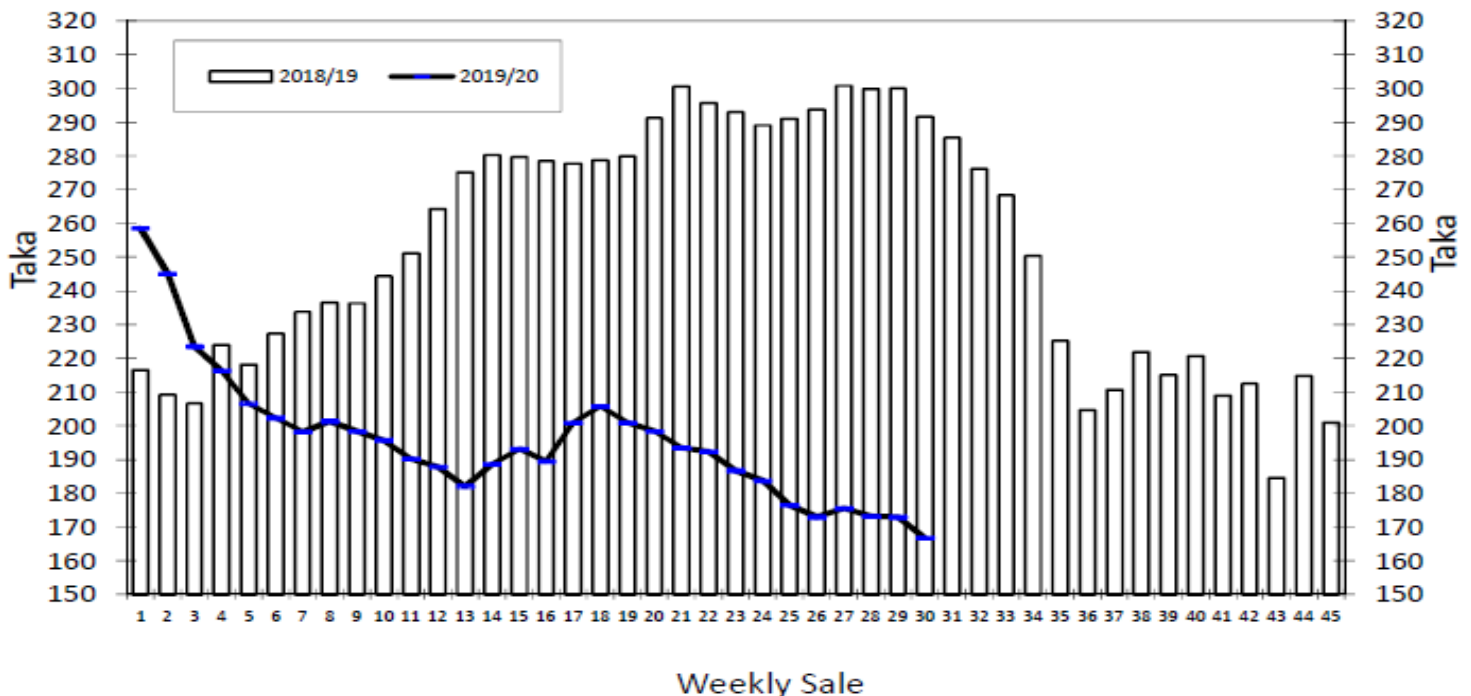
Offerings

Type	This Sale (Sale 31)				Next Sale (Sale 32)			
	Season 2019-2020		Season 2018-2019		Season 2019-2020		Season 2018-2019	
	Packages	Qty/Kg	Packages	Qty/Kg	Packages	Qty/Kg	Packages	Qty/Kg
Leaf	68,866	3,773,857	45,030	2,469,045	75,446	4,134,441	50,262	2,754,396
Dust	9,695	531,286	7,955	437,505	11,728	642,694	7,450	403,481
Total	78,561	4,305,143	52,985	2,906,550	87,174	4,777,135	57,712	3,157,877

Chittagong Auction Average: Sale 30

Season 2019/20: Tk. 166.81, Season 2018/19: Tk. 291.62

Chittagong Auction Weekly Average



Chittagong Auction Statistics - Sale: 30

Quantities of Teas Sold & Average Prices Realised

Category	For the Sale				Up-to-Date Sale							
	Season 2018/19		Season 2019/20		Season 2018/19		Season 2019/20		(+/-) Season 2018/19			
	Qty. (Kg)	Taka	Qty. (Kg)	Taka	Qty. (Kg)	(%)	Taka	Qty. (Kg)	(%)	Taka	Qty. (Kg)	Taka
CTC LEAF	1,447,330.2	290.86	2,184,906.5	163.56	46,695,843.9	81.0%	273.72	49,819,362.0	81.5%	191.18	3,123,518.1	-82.54
CTC DUST	353,070.0	294.66	446,193.2	182.72	10,598,146.3	18.4%	278.00	11,004,059.0	18.0%	200.20	405,912.7	-77.80
Sub-Total	1,800,400.2	291.61	2,631,099.7	166.81	57,293,990.2	99.4%	274.51	60,823,421.0	99.5%	192.81	3,529,430.8	-81.70
ORTHODOX	103.5	510.00	0.0	0.00	1,013.5	0.0%	545.30	297.5	0.0%	236.77	-716.0	-308.53
Total	1,800,503.7	291.62	2,631,099.7	166.81	57,295,003.7	99.4%	274.52	60,823,718.5	99.5%	192.81	3,528,714.8	-81.71
GREEN TEA	0.0	0.00	0.0	0.00	0.0	0.0%	0.00	3,423.0	0.0%	452.15	3,423.0	452.15
Total	1,800,503.7	291.62	2,631,099.7	166.81	57,295,003.7	99.4%	274.52	60,827,141.5	99.5%	192.82	3,532,137.8	-81.69
Other (s)	547.0	250.00	0.0	0.00	342,868.0	0.6%	217.87	332,419.4	0.5%	78.20	-10,448.6	-139.67
G.Total	1,801,050.7	291.61	2,631,099.7	166.81	57,637,871.7	100%	274.18	61,159,560.9	100%	192.20	3,521,689.2	-81.98

Buyer Purchase Analysis

Buyer	For the Sale				Up-to-Date Sale							
	Season 2018/19		Season 2019/20		Season 2018/19		Season 2019/20		(+/-) Season 2018/19			
	Qty. (Kg)	Taka	Qty. (Kg)	Taka	Qty. (Kg)	(%)	Taka	Qty. (Kg)	(%)	Taka	Qty. (Kg)	Taka
Export	0.0	0.00	30,554.5	93.83	16,183.5	0.03%	262.10	45,872.9	0.08%	135.38	29,689.4	-126.72
Internal	1,801,050.7	291.61	2,600,545.2	167.67	57,621,688.2	99.97%	274.18	61,113,688.0	99.92%	192.24	3,491,999.8	-81.94
Grand Total	1,801,050.7	291.61	2,631,099.7	166.81	57,637,871.7	100%	274.18	61,159,560.9	100%	192.20	3,521,689.2	-81.98

Crop of Major Tea Producing & Exporting Countries

Country	Month	For the Month			Up-to-Date		
		2018	2019	(+/-) 2018	2018	2019	(+/-) 2018
Bangladesh *	October	11.9	13.4	1.5	66.7	79.3	12.6
North India	October	155.8	151.7	-4.1	976.5	1004.1	27.6
South India	October	27.0	25.2	-1.8	185.5	179.2	-6.3
All India	October	182.8	176.9	-5.9	1162.0	1183.3	21.3
Kenya	October	49.3	46.3	-3.0	395.5	363.1	-32.4
Malawi	October	2.2	2.3	0.1	42.8	42.0	-0.8
Sri Lanka	October	29.1	20.8	-8.3	252.7	253.7	1.0

* Source: Bangladesh Tea Board's Monthly Statistical Bulletin

General + Other Market(s) This/Last Week

KOLKATA SALE 49- 3RD/4TH & 5TH DECEMBER, 2019

There was fair demand. Good and medium Assams sold at irregularly easier levels closely following quality. Brownish, plainer liquoring teas were discounted and sold at easier rates. Better, good and well-made medium Dooars were barely steady to irregularly easier. The remainder was irregular around last levels and tended easier in line with quality. Western India accounts were active, but were selective mostly on brighter liquoring invoices. Export accounts operated on larger Brokens. Regional packeteers operated on medium and plainer categories.

Tea Category USC/KG	Brokens	Fannings	Dusts
BEST ASSAMS	311-339	297-318	339-367
GOOD ASSAMS	254-297	268-297	304-332
MED ASSAMS	212-240	212-240	212-282
BEST DOOARS	240-275	226-254	212-233
GOOD- MED DOOARS	191-219	198-226	184-198
PLAINER DOOARS	127-156	127-170	127-170

SILIGURI SALE 49- 4TH DECEMBER, 2019

LEAF: Good demand. Levels for Good/ Best and some better medium sorts tended irregular and easier in line with quality. The medium/common segment witnessed better enquiry at last levels. Cleaner reprints were well competed for. DUST: Good demand at steady to easier levels. All sections operated.

Quotations (USC/KG)	Brokens(USC/kg)	Fannings(USC/kg)	Dust (USC/kg)
GOOD / BEST	254-339	240-325	212-275
MEDIUM / BETTER MEDIUM	184-247	177-233	170-205
COMMON / BLF	113-177	113-170	120-163

COONOOR SALE 49- 6TH DECEMBER, 2019

CTC: This week saw less demand. The Best liquoring teas were steady to occasionally dearer; Good sorts were dearer by Rs.2 – 4; Mediums types were steady to easier upto Rs.2. Plain brown teas were heavily discounted while Plainers in general eased by Rs.2 – 3.

CTC Leaf(USC/KG)	Best	Good	Medium	Plain
	149-175	123-144	96-110	88-94

MOMBASA SALE 49- 2ND & 3RD DECEMBER, 2019

Fairly good demand at irregular levels for the 165,580 packages (10,996,635.00kilos) in the market with 15.32% remaining unsold.

CTC QUOTATIONS	BP1 – USC	PF1 – USC	PD – USC	D1 – USC
Best	284 – 650	265 – 330	278 – 360	285 – 353
Good	270 – 388	255 – 280	278 – 294	292 – 330
Good Medium	280 – 324	248 – 274	266 – 285	265 – 310
Medium	160 – 204	220 – 254	221 – 255	202 – 276
Lower Medium	130 – 160	128 – 210	116 – 200	120 – 212
Plainer	118 – 162	110 – 192	065 – 180	070 – 184