

NATIONAL BROKERS LIMITED

<http://nationalbrokersbd.com/>

Tea Auctioneers since 1948

TEA MARKET REPORT – Sale 30 held on Tuesday 3rd December, 2019

CTC LEAF: 75,568 packages of Current Season and 56 packages of Old Season teas on offer met with a slightly improved demand with prices again following quality.

BROKENS: A small weight of well made Brokens on offer met with a strong demand and were mostly firm to slightly dearer. Medium varieties saw a little more demand but eased slightly. Larger Brokens followed a similar trend. Poor varieties continued to meet with a difficult market and there were heavier withdrawals.

FANNINGS: All good liquoring varieties on offer met with a fairly strong demand and were mostly firm to occasionally dearer. Medium types also saw a better demand and were generally steady on last. Plain types were an easier market with a lot of withdrawals as well as the poorest varieties.

CTC DUST: 12,207 packages of Current Season and 10 packages of Old Season teas on offer met with an improved demand. The best liquoring teas met with a good competition and advanced by Tk.8/- to 10/- following quality. Good teas were fully firm to slightly dearer. Medium teas also sold well at around last levels. Brownish, plainer liquoring BLF teas were an easier market and witnessed fair withdrawals. Blenders lent strong support with fair interest from the Loose teas buyers.

COMMENTS: There was a little more interest in this week's sale from Blenders and Loose tea buyers. Consequently, brighter teas witnessed more competition and sold in line with quality.

Dusts were a dearer market.

Our catalogue (Sale 30): Avg: Tk 183.54, Sold 56.3% & (Sale 29) Avg: Tk 181.74, sold 54.8%.

Quotations – This Week – (In Taka)

Brokens	This Week	Last Week	Fannings	This week	Last Week	Dust	This week	Last Week
Large	150-160	155-160	Best	195-200	185-195	PD	166-237	170-265
Medium	160-170	160-170	Good	182-192	180-185	RD	100-272	114-248
Small	165-175	165-175	Medium	165-175	165-175	D	95-250	126-248
Plain	105-115	105-120	Plain	105-115	105-120	CD	135-288	134-280
BLF	100-115	100-115	BLF	100-115	100-115	BLF	106-175	114-170

(BLF- Bought Leaf Factory)

Exchange Rates 03 December, 2019 Sterling Pound: Tk.. 107.6330, dollar: Tk. 83.6702

Top Prices – This Week

Category – CTC	Garden	Grade	Package	Price	Buyer(s)
Brokens	Madhupur	GBOP(S)	20	280/-	Nishat/Safe Touch
Fannings	* Madhupur	PF	30	266/-	Danish/AKT
Clonal Brokens	Kaiyacherra Dalu	GBOP	20	359/-	AKT/Three Star
Clonal Fannings	Kaiyacherra Dalu	OF	20	337/-	Sharif/Shawon
PD/RD (Incl Clone)	Clevedon	PD(C)	10	293/-	Kamona
D (Incl Clone)	Clevedon	D(C)	10	291/-	Kamona
CD (Incl Clone)	* Amrail	CD	10	288/-	Shawon

* Above price(s) realised in our catalogue

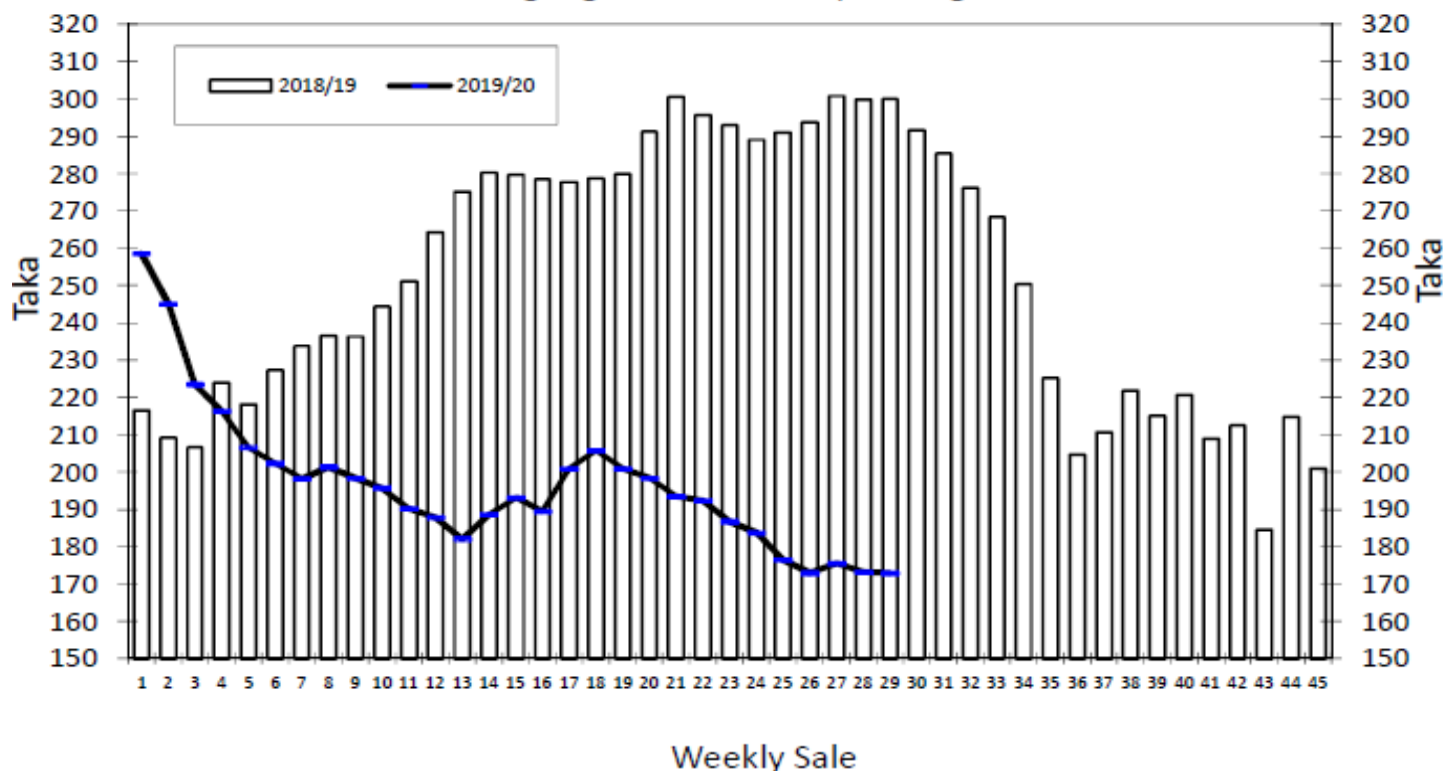
Offerings

Type	This Sale (Sale 30)				Next Sale (Sale 31)			
	Season 2019-2020		Season 2018-2019		Season 2019-2020		Season 2018-2019	
	Packages	Qty/Kg	Packages	Qty/Kg	Packages	Qty/Kg	Packages	Qty/Kg
Leaf	73,624	4,032,683	44,314	2,429,415	68,356	3,745,909	45,030	2,469,045
Dust	12,217	671,034	7,202	395,632	10,117	554,412	7,955	437,505
Total	85,841	4,703,717	51,516	2,825,047	78,473	4,300,320	52,985	2,906,550

Chittagong Auction Average: Sale 29

Season 2019/20: Tk. 172.94, Season 2018/19: Tk. 299.94

Chittagong Auction Weekly Average



Chittagong Auction Statistics - Sale: 29

Quantities of Teas Sold & Average Prices Realised

Category	For the Sale				Up-to-Date Sale							
	Season 2018/19		Season 2019/20		Season 2018/19		Season 2019/20		(+/-) Season 2018/19			
	Qty. (Kg)	Taka	Qty. (Kg)	Taka	Qty. (Kg)	(%)	Taka	Qty. (Kg)	(%)	Taka	Qty. (Kg)	Taka
CTC LEAF	1,788,723.5	299.46	1,345,208.5	170.23	45,248,513.7	81.0%	273.18	47,634,455.5	81.4%	192.45	2,385,941.8	-80.73
CTC DUST	380,763.9	302.15	316,155.8	184.47	10,245,076.3	18.3%	277.42	10,557,865.8	18.0%	200.93	312,789.5	-76.49
Sub-Total	2,169,487.4	299.94	1,661,364.3	172.94	55,493,590.0	99.4%	273.96	58,192,321.3	99.4%	193.99	2,698,731.3	-79.97
ORTHODOX	49.0	530.00	0.0	0.00	910.0	0.0%	549.31	297.5	0.0%	236.77	-612.5	-312.54
Total	2,169,536.4	299.94	1,661,364.3	172.94	55,494,500.0	99.4%	273.96	58,192,618.8	99.4%	193.99	2,698,118.8	-79.97
GREEN TEA	0.0	0.00	0.0	0.00	0.0	0.0%	0.00	3,423.0	0.0%	452.15	3,423.0	452.15
Total	2,169,536.4	299.94	1,661,364.3	172.94	55,494,500.0	99.4%	273.96	58,196,041.8	99.4%	194.00	2,701,541.8	-79.96
Other (s)	2,194.0	252.25	0.0	0.00	342,321.0	0.6%	217.82	332,419.4	0.6%	78.20	-9,901.6	-139.62
G.Total	2,171,730.4	299.89	1,661,364.3	172.94	55,836,821.0	100%	273.62	58,528,461.2	100%	193.34	2,691,640.2	-80.28

Buyer Purchase Analysis

Buyer	For the Sale				Up-to-Date Sale							
	Season 2018/19		Season 2019/20		Season 2018/19		Season 2019/20		(+/-) Season 2018/19			
	Qty. (Kg)	Taka	Qty. (Kg)	Taka	Qty. (Kg)	(%)	Taka	Qty. (Kg)	(%)	Taka	Qty. (Kg)	Taka
Export	0.0	0.00	0.0	0.00	16,183.5	0.03%	262.10	15,318.4	0.03%	218.26	-865.1	-43.84
Internal	2,171,730.4	299.89	1,661,364.3	172.94	55,820,637.5	99.97%	273.62	58,513,142.8	99.97%	193.34	2,692,505.3	-80.28
Grand Total	2,171,730.4	299.89	1,661,364.3	172.94	55,836,821.0	100%	273.62	58,528,461.2	100%	193.34	2,691,640.2	-80.28

Crop of Major Tea Producing & Exporting Countries

Country	Month	For the Month			Up-to-Date		
		2018	2019	(+/-) 2018	2018	2019	(+/-) 2018
Bangladesh *	October	11.9	13.4	1.5	66.7	79.3	12.6
North India	October	155.8	151.7	-4.1	976.5	1004.1	27.6
South India	October	27.0	25.2	-1.8	185.5	179.2	-6.3
All India	October	182.8	176.9	-5.9	1162.0	1183.3	21.3
Malawi	October	2.2	2.3	0.1	42.8	42.0	-0.8
Kenya	September	42.5	35.5	-7.0	346.0	317.0	-29.0
Sri Lanka	September	19.4	21.7	2.3	223.0	232.7	9.7

* Source: Bangladesh Tea Board's Monthly Statistical Bulletin

General + Other Market(s) This/Last Week

SILIGURI SALE 48- 27TH NOVEMBER, 2019

LEAF: Good demand across all segments at steady levels to occasionally dearer at times. DUST: Good demand at last levels. All sections operated.

Quotations (USC/KG)	Brokens(USC/kg)	Fannings(USC/kg)	Dust (USC/kg)
GOOD / BEST	259-350	252-322	217-273
MEDIUM / BETTER MEDIUM	175-252	175-245	168-210
COMMON / BLF	112-168	112-168	112-161

COONOOR SALE 48- 29TH NOVEMBER, 2019

Demand was slightly improved this week, albeit at easier levels compared to the previous. The Best and Good liquoring teas although irregular, were at times dearer, closely following quality; Mediums types were steady to occasionally dearer; Plainers were easier upto Rs.2. There was a general better demand for Fannings which was substantially dearer. The Major Blenders and Regional Packeteers were active: Exporters were fair; Internal Trade was selective.

CTC Leaf(USC/KG)	Best	Good	Medium	Plain
	143-165	118-135	98-112	86-94

MOMBASA SALE NO 48 – 25TH & 26TH NOVEMBER, 2019

There was good but irregular demand for the 164,407 packages (10,808,414.50 kilos) on offer. 16.35% were however unsold.

CTC QUOTATIONS	BP1 – USC	PF1 – USC	PD – USC	D1 – USC
Best	311 – 622	272 – 324	290 – 380	298 – 350
Good	242 – 384	264 – 294	280 – 300	302 – 372
Good Medium	265 – 350	250 – 282	285 – 298	275 – 320
Medium	168 – 275	220 – 258	225 – 262	214 – 280
Lower Medium	135 – 220	124 – 214	107 – 218	125 – 216
Plainer	120 – 170	108 – 196	075 – 188	079 – 185