

NATIONAL BROKERS LIMITED

<http://nationalbrokersbd.com/>

Tea Auctioneers since 1948

TEA MARKET REPORT – Sale 25 held on Monday 28th October, 2019

CTC LEAF: 47,565 packages of Current Season and 111 packages of Old Season teas on offer met with less demand at easier rates.

BROKENS: Good Brokens met with quite a fair demand but prices eased by Tk.3/- to Tk.5/- per kg and sometimes more. Medium Brokens met with much less demand and sold at lower rates often by upto Tk.5/- to Tk.7/- per kg whilst their plainer varieties eased further with a lot of withdrawals. Poor sorts were mostly withdrawn without any bids.

FANNINGS: Good Fannings met with a fair demand but sold at lower rates often by Tk.5/- and more. Medium varieties followed a similar trend with quite fair withdrawals. Plainer sorts were much easier with quite heavy withdrawals. Poor types once again were subject to heavy withdrawals.

CTC DUST: 8,714 packages of Current Season teas on offer met with a fair demand. Good liquoring teas

were firm to slightly dearer market. Medium liquoring teas were easier. Plainer and BLF met with easier demand and there were quite a few withdrawals. Blenders were fairly strong with fair interest from the Loose tea buyers.

COMMENTS: This sale was held in Srimangal. Initially, there was fairly good demand but as the sale progressed, demand slackened and withdrawals became more frequent particularly for the reprinted teas. Plain and BLF teas were once again difficult of sale and continued to suffer heavy withdrawals. Blenders were the mainstay of the market with selective enquiry from the Loose tea buyers. Dusts met with a fair demand.

Our catalogue (Sale 25): Avg: Tk 185.39, Sold 61.5% & (Sale 24) Avg: Tk 188.85, sold 57.4%.

Quotations – This Week – (In Taka)

Brokens	This Week	Last Week	Fannings	This week	Last Week	Dust	This week	Last Week
Large	165-185	175-185	Best	191-195	193-198	PD	168-221	180-229
Medium	175-185	178-188	Good	184-189	185-192	RD	158-233	110- 250
Small	175-185	178-188	Medium	175-180	178-183	D	132-252	135-260
Plain	120-150	130-155	Plain	120-150	130-155	CD	165-307	160-304
BLF	110-140	110-140	BLF	110-140	110-140	BLF	132.00	110-178

(BLF- Bought Leaf Factory)

Exchange Rates 28th October, 2019 Sterling Pound: Tk..106.3533, dollar: Tk. 83.4708

Top Prices – This Week

Category – CTC	Garden	Grade	Package	Price	Buyer(s)
Brokens	* Madhupur	GBOP	10	279/-	Ali
Fannings	* Madhupur	PF	20	240/-	Aftab
Clonal Brokens	Clevedon	GBOPS	10	321/-	GT
Clonal Fannings	Kaiyacherra Dalu	OF	22	303/-	Shawon/NBT
PD/RD (Incl Clone)	Kaiyacherra Dalu	PD(C)	10	265/-	Aftab
D (Incl Clone)	* Madhupur	D(C)BT1	20	252/-	Aftab/Shawon
CD (Incl Clone)	* Amrail	CD	10	307/-	Shawon

* Above price(s) realised in our catalogue

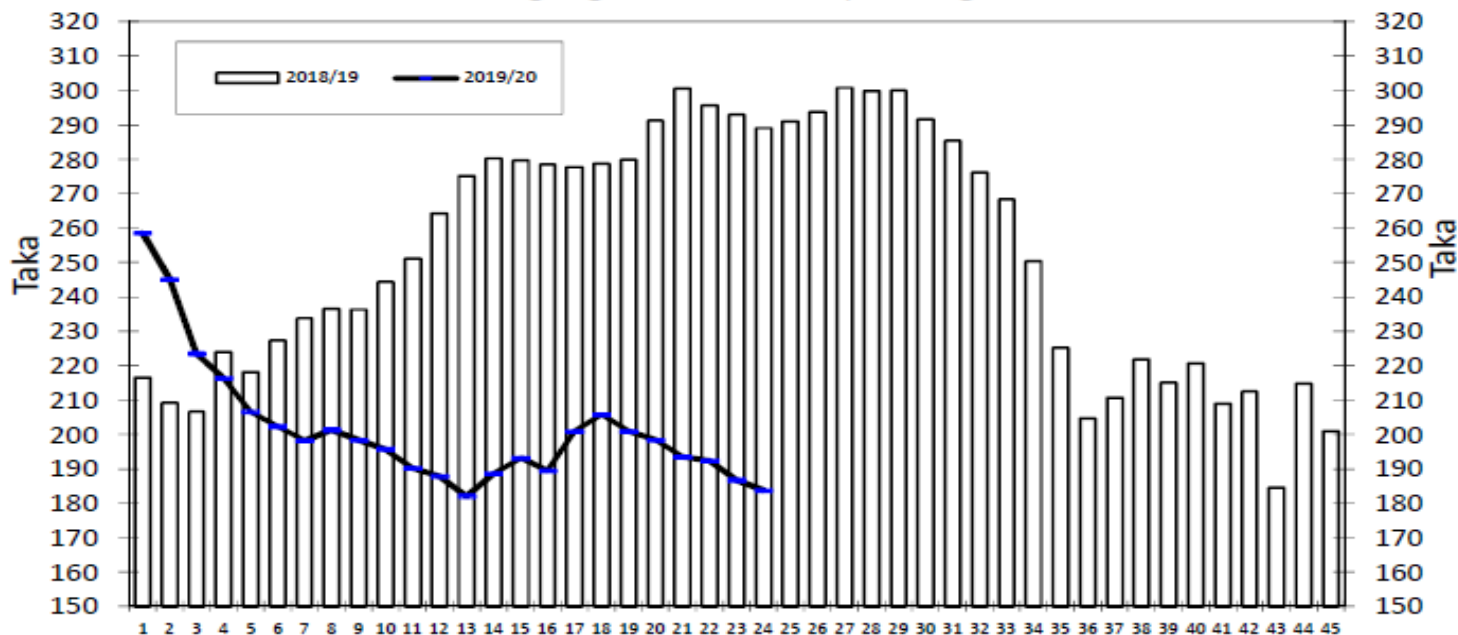
Offerings

Type	This Sale (Sale 25)				Next Sale (Sale 26)			
	Season 2019-2020		Season 2018-2019		Season 2019-2020		Season 2018-2019	
	Packages	Qty/Kg	Packages	Qty/Kg	Packages	Qty/Kg	Packages	Qty/Kg
Leaf	47,676	2,611,878	44,741	2,451,036	73,850	4,046,980	39,669	2,172,857
Dust	8,714	478,703	8,653	475,226	13,153	720,784	7,081	388,681
Total	56,390	3,090,581	53,394	2,926,262	87,003	4,767,764	46,750	2,561,538

Chittagong Auction Average: Sale 24

Season 2019/20: Tk. 183.80, Season 2018/19: Tk. 288.98

Chittagong Auction Weekly Average



Weekly Sale

Chittagong Auction Statistics - Sale: 24
Quantities of Teas Sold & Average Prices Realised

Category	For the Sale				Up-to-Date Sale							
	Season 2018/19		Season 2019/20		Season 2018/19		Season 2019/20		(+/-) Season 2018/19			
	Qty. (Kg)	Taka	Qty. (Kg)	Taka	Qty. (Kg)	(%)	Taka	Qty. (Kg)	(%)	Taka	Qty. (Kg)	Taka
CTC LEAF	2,164,439.5	289.55	1,834,125.0	182.65	35,509,029.4	80.7%	266.75	39,088,051.5	81.3%	196.90	3,579,022.1	-69.84
CTC DUST	475,215.9	286.35	445,090.8	188.53	8,211,251.2	18.7%	272.02	8,677,142.2	18.0%	204.72	465,891.0	-67.30
Sub-Total	2,639,655.4	288.98	2,279,215.8	183.80	43,720,280.6	99.4%	267.74	47,765,193.7	99.3%	198.32	4,044,913.1	-69.41
ORTHODOX	160.5	541.96	0.0	0.00	757.5	0.0%	550.47	297.5	0.0%	236.77	-460.0	-313.70
Total	2,639,815.9	288.99	2,279,215.8	183.80	43,721,038.1	99.4%	267.74	47,765,491.2	99.3%	198.32	4,044,453.1	-69.42
GREEN TEA	0.0	0.00	0.0	0.00	0.0	0.0%	0.00	3,423.0	0.0%	452.15	3,423.0	452.15
Total	2,639,815.9	288.99	2,279,215.8	183.80	43,721,038.1	99.4%	267.74	47,768,914.2	99.3%	198.34	4,047,876.1	-69.40
Other (s)	32,096.0	244.41	2,188.9	89.00	284,434.0	0.6%	211.11	325,289.2	0.7%	78.05	40,855.2	-133.06
G.Total	2,671,911.9	288.46	2,281,404.7	183.71	44,005,472.1	100%	267.37	48,094,203.4	100%	197.53	4,088,731.3	-69.85

Buyer Purchase Analysis

Buyer	For the Sale				Up-to-Date Sale							
	Season 2018/19		Season 2019/20		Season 2018/19		Season 2019/20		(+/-) Season 2018/19			
	Qty. (Kg)	Taka	Qty. (Kg)	Taka	Qty. (Kg)	(%)	Taka	Qty. (Kg)	(%)	Taka	Qty. (Kg)	Taka
Export	0.0	0.00	6,540.2	189.83	16,183.5	0.04%	262.10	15,318.4	0.03%	218.26	-865.1	-43.84
Internal	2,671,911.9	288.46	2,274,864.5	183.69	43,989,288.6	99.96%	267.38	48,078,885.0	99.97%	197.52	4,089,596.4	-69.86
Grand Total	2,671,911.9	288.46	2,281,404.7	183.71	44,005,472.1	100%	267.37	48,094,203.4	100%	197.53	4,088,731.3	-69.85

Crop of Major Tea Producing & Exporting Countries

Country	Month	For the Month			Up-to-Date		
		2018	2019	(+/-) 2018	2018	2019	(+/-) 2018
Bangladesh *	September	12.0	13.4	1.4	54.9	65.9	11.1
Malawi	September	3.6	2.1	-1.5	40.6	39.8	-0.8
Kenya	August	37.4	37.2	-0.2	303.7	281.3	-22.4
Sri Lanka	August	21.5	26.0	4.5	203.6	210.8	7.2
North India	August	177.8	157.1	-20.7	665.3	684.6	19.3
South India	August	12.3	14.8	2.5	139.1	137.0	-2.1
All India	August	190.1	171.9	-18.2	804.4	821.6	17.2

* Source: Bangladesh Tea Board's Monthly Statistical Bulletin

General + Other Market(s) This/Last Week

KOLKATA SALE 43- 22ND & 23RD OCTOBER, 2019

CTC: There was good demand. Good Assams Brokens sold at irregular levels around last. There was stronger demand for good liquoring Fannings from Export and Internal segments which sold at firm to dearer rates. Other Assams were steady. Better Dooars and clean, well-made sorts in other categories were steady. The remainder was irregular with quality. M/s Tata Global Beverages operated on a cross-section of the offerings in both markets. M/s Hindustan Unilever operated in both markets with more activity on brighter liquoring dusts. There was strong activity from M/s Unilever Exports on good liquoring Assam Fannings as a result of which Fannings saw a rise in overall levels.

Tea Category USC/KG	Brokens	Fannings	Dusts
BEST ASSAMS	339-367	325-346	339-353
GOOD ASSAMS	297-325	289-318	297-332
MED ASSAMS	212-254	212-240	212-254
BEST DOOARS	247-261	240-254	219-233
GOOD- MED DOOARS	198-233	198-226	184-205
PLAINER DOOARS	127-169	127-169	127-169

SILIGURI SALE 43- 23RD OCTOBER, 2019

LEAF: Good demand. Best/good and some better medium sorts sold at firm levels. The remainder were steady to easier following quality. DUST: Good demand & followed a similar trend to leaf. All sections operated.

Quotations (USC/KG)	Brokens(USC/kg)	Fannings(USC/kg)	Dust (USC/kg)
GOOD / BEST	247-339	240-325	212-275
MEDIUM / BETTER MEDIUM	177-240	177-233	169-205
COMMON / BLF	113-169	113-169	113-162

COONOOR SALE 43 – 25TH OCTOBER 2019

This week saw reduced demand. The Best liquoring teas eased by Rs.5 – 7, the Good and Medium sorts by Rs.2 – 4 and the Plainers by Rs.3 – 5. There were large withdrawals in all categories. The Major Blenders were active; Regional Packeteers were fair; The Internal trade was selective; Exporters were prominent by their absence

CTC Leaf(USC/KG)	Best	Good	Medium	Plain
	155-171	126-144	106-117	90-102

MOMBASA SALE 43- 22ND & 23RD OCTOBER 2019

There was fairly good demand for the 147,279 packages (9,720,194.50 kilos) on offer at irregular rates closely following quality. 12.06% were neglected

CTC QUOTATIONS	BP1 – USC	PF1 – USC	PD – USC	D1 – USC
Best	310 – 646	284 – 322	322 – 350	318 – 350
Good	240 – 394	278 – 310	320 – 338	320 – 353
Good Medium	260 – 330	252 – 290	314 – 326	315 – 332
Medium	150 – 250	216 – 264	218 – 268	214 – 274
Lower Medium	130 – 165	122 – 232	125 – 236	120 – 228
Plainer	110 – 162	104 – 190	110 – 210	112 – 208