

# NATIONAL BROKERS LIMITED

<http://nationalbrokersbd.com/>

**Tea Auctioneers since 1948**

## TEA MARKET REPORT – Sale 24 held on Tuesday 22<sup>nd</sup> October, 2019

CTC LEAF: 64,507 packages of Current Season and 125 packages of Old Season teas on offer met with an improved demand particularly for all better liquoring types.

BROKENS: Good Brokens met with a good competition and were often firm to slightly dearer. Medium Brokens were also a good market and mostly sold at last levels whilst their plainer varieties were in much less demand with quite fair withdrawals. Poor types once again met with a selective demand and fetched heavy withdrawals.

FANNINGS: Good Fannings met with a good demand and mostly sold at around last levels. Mediums met with a fair demand and were slightly easier whilst plainer types were much easier with a lot of withdrawals. Poor types mostly remained unsold without bids.

CTC DUST: 11,691 packages of Current Season and 70 packages of Old Season Teas on offer met with a

fairly good demand. Good liquoring teas were firm to slightly dearer market. Their mediums were barely steady to easier. Plainer and BLF descriptions were easier with quite a few withdrawals. Blenders lent strong support with fair interest from the Loose tea buyers.

COMMENTS: More widespread demand was witnessed this week particularly for the better liquoring varieties. As a result, these were fully firm to slightly dearer over last. Plain and BLF were once again difficult of sale and suffered heavy withdrawals. There was more activity from the Blenders this week but Loose tea buyers continued to be selective.

Dusts sold well.

**Our catalogue (Sale 24): Avg: Tk 189.53, Sold 56.5% & ( Sale 23 ) Avg: Tk 190.09, sold 55.9%.**

### Quotations – This Week – (In Taka)

Brokens	This Week	Last Week	Fannings	This week	Last Week	Dust	This week	Last Week
Large	175-185	178-188	Best	193-198	192-197	PD	180-229	178-213
Medium	178-188	175-185	Good	185-192	185-191	RD	110- 250	97-240
Small	178-188	178-188	Medium	178-183	177-183	D	135-260	100-243
Plain	130-155	130-160	Plain	130-155	130-160	CD	160-304	165-302
BLF	110-140	120-145	BLF	110-140	120-145	BLF	110-178	97-165

(BLF- Bought Leaf Factory)

Exchange Rates 22<sup>nd</sup> October, 2019 Sterling Pound: Tk.107.7213, dollar: Tk. 83.4708

### Top Prices – This Week

Category – CTC	Garden	Grade	Package	Price	Buyer(s)
Brokens	* Madhupur	GBOP(S)	20	260/-	Taj/Alamgir
Fannings	* Chandpur Belgaon	OF(S)	10	248/-	Aftab
Clonal Brokens	Kaiyacherra Dalu	GBOP	21	329/-	GT/AKT
Clonal Fannings	Kaiyacherra Dalu	OF	20	311/-	LC
PD/RD (Incl Clone)	Kaiyacherra Dalu	PD(C)	10	273/-	Danish
D (Incl Clone)	* Madhupur	D(C) BT1	20	260/-	Shawon
CD (Incl Clone)	* Amrail	CD	10	304/-	Kamona

\* Above price(s) realised in our catalogue

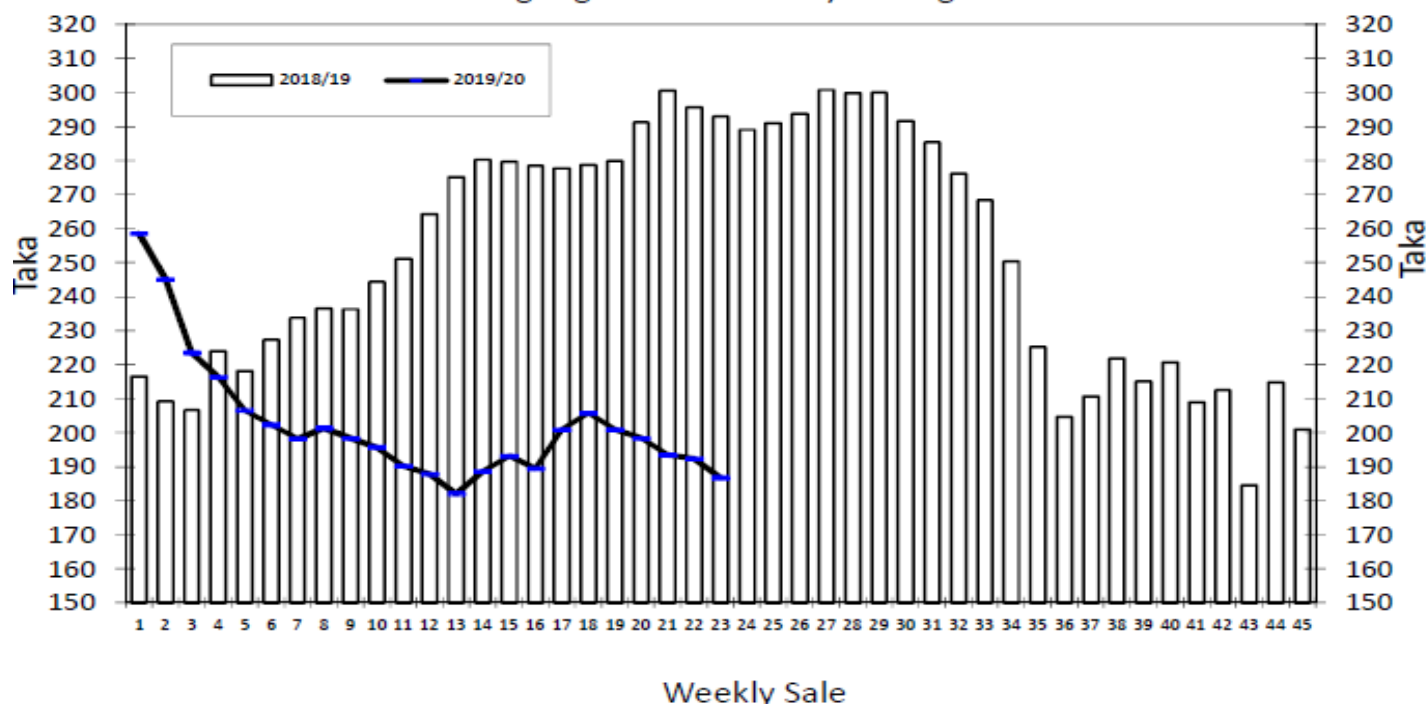
### Offerings

Type	This Sale ( Sale 24 )				Next Sale ( Sale 25 )			
	Season 2019-2020		Season 2018-2019		Season 2019-2020		Season 2018-2019	
	Packages	Qty/Kg	Packages	Qty/Kg	Packages	Qty/Kg	Packages	Qty/Kg
Leaf	64,632	3,539,720	49,096	2,690,269	47,776	2,618,125	44,741	2,451,036
Dust	11,761	645,876	9,517	522,607	8,713	477,472	8,653	475,226
Total	76,393	4,185,596	58,613	3,212,876	56,489	3,095,597	53,394	2,926,262

Chittagong Auction Average: Sale 23

Season 2019/20: Tk. 186.79, Season 2018/19: Tk. 293.06

### Chittagong Auction Weekly Average



**Chittagong Auction Statistics - Sale: 23**

**Quantities of Teas Sold & Average Prices Realised**

Category	For the Sale				Up-to-Date Sale							
	Season 2018/19		Season 2019/20		Season 2018/19		Season 2019/20		Season 2018/19		Season 2019/20	
	Qty. (Kg)	Taka	Qty. (Kg)	Taka	Qty. (Kg)	(%)	Taka	Qty. (Kg)	(%)	Taka	Qty. (Kg)	(%)
CTC LEAF	1,991,552.5	293.47	1,881,672.5	185.83	33,344,589.9	80.7%	265.27	37,253,926.5	81.3%	197.60	3,909,336.6	-67.66
CTC DUST	501,045.4	291.42	404,459.1	191.27	7,736,035.3	18.7%	271.14	8,232,051.4	18.0%	205.59	496,016.1	-65.54
Sub-Total	2,492,597.9	293.06	2,286,131.6	186.79	41,080,625.2	99.4%	266.37	45,485,977.9	99.3%	199.05	4,405,352.7	-67.32
ORTHODOX	0.0	0.00	0.0	0.00	597.0	0.0%	552.76	297.5	0.0%	236.77	-299.5	-315.98
Total	2,492,597.9	293.06	2,286,131.6	186.79	41,081,222.2	99.4%	266.38	45,486,275.4	99.3%	199.05	4,405,053.2	-67.33
GREEN TEA	0.0	0.00	297.5	1,000.00	0.0	0.0%	0.00	3,423.0	0.0%	452.15	3,423.0	452.15
Total	2,492,597.9	293.06	2,286,429.1	186.89	41,081,222.2	99.4%	266.38	45,489,698.4	99.3%	199.07	4,408,476.2	-67.31
Other (s)	0.0	0.00	2,194.7	115.75	252,338.0	0.6%	206.87	323,100.3	0.7%	77.97	70,762.3	-128.90
G.Total	2,492,597.9	293.06	2,288,623.8	186.83	41,333,560.2	100%	266.01	45,812,798.7	100%	198.21	4,479,238.5	-67.80

**Buyer Purchase Analysis**

Buyer	For the Sale				Up-to-Date Sale							
	Season 2018/19		Season 2019/20		Season 2018/19		Season 2019/20		Season 2018/19		Season 2019/20	
	Qty. (Kg)	Taka	Qty. (Kg)	Taka	Qty. (Kg)	(%)	Taka	Qty. (Kg)	(%)	Taka	Qty. (Kg)	Taka
Export	0.0	0.00	0.0	0.00	16,183.5	0.04%	262.10	8,778.2	0.02%	239.44	-7,405.3	-22.66
Internal	2,492,597.9	293.06	2,288,623.8	186.83	41,317,376.7	99.96%	266.01	45,804,020.5	99.98%	198.21	4,486,643.8	-67.80
Grand Total	2,492,597.9	293.06	2,288,623.8	186.83	41,333,560.2	100%	266.01	45,812,798.7	100%	198.21	4,479,238.5	-67.80

**Crop of Major Tea Producing & Exporting Countries**

Country	Month	For the Month			Up-to-Date		
		2018	2019	(+/-) 2018	2018	2019	(+/-) 2018
Bangladesh *	September	12.0	13.4	1.4	54.9	65.9	11.1
Malawi	September	3.6	2.1	-1.5	40.6	39.8	-0.8
Kenya	August	37.4	37.2	-0.2	303.7	281.3	-22.4
Sri Lanka	August	21.5	26.0	4.5	203.6	210.8	7.2
North India	August	177.8	157.1	-20.7	665.3	684.6	19.3
South India	August	12.3	14.8	2.5	139.1	137.0	-2.1
All India	August	190.1	171.9	-18.2	804.4	821.6	17.2

\* Source: Bangladesh Tea Board's Monthly Statistical Bulletin

## General + Other Market(s) This/Last Week

### KOLKATA SALE 42- 15<sup>TH</sup> /16<sup>TH</sup> & 17<sup>TH</sup> OCTOBER, 2019

CTC Leaf: There was good demand. Brighter liquoring Assams were barely steady to easier. Other Assams were irregular and easier. Better Doors and other well-made Doors were firm. Plainer and BLF descriptions were steady. Export accounts operated primarily on larger Brokens. Western India accounts were active on good liquoring descriptions. Regional packeteers operated on a cross-section of the offerings.

Tea Category USC/KG	Brokens	Fannings	Dusts
BEST ASSAMS	310-324	289-310	324-338
GOOD ASSAMS	282-296	261-282	296-324
MED ASSAMS	211-254	197-233	226-254
BEST DOOARS	261-275	247-261	219-233
GOOD- MED DOOARS	197-240	197-226	183-197
PLAINER DOOARS	127-169	127-169	127-169

### COONOOR SALE 42 – 18<sup>TH</sup> OCTOBER 2019

There was much reduced demand this week. The Best and Good liquoring teas were easier by Rs.2–3; The Medium sorts eased by Rs.3–5 and the Plainer sorts upto Rs.2. All categories witnessed large withdrawals. The Major Blender was once again the mainstay with all other sections of the market operating very selectively.

CTC Leaf(USC/KG)	Best	Good	Medium	Plain
	158-169	127-147	107-118	92-103

### SILIGURI SALE 41- 10<sup>TH</sup> OCTOBER, 2019

LEAF: Good demand. Best/good and few better Medium sorts were well competed for. The remainder were irregular and around last following quality. DUST: Good demand at steady levels. All sections operated.

Quotations (USC/KG)	Brokens(USC/kg)	Fannings(USC/kg)	Dust (USC/kg)
GOOD / BEST	240-324	233-310	211-268
MEDIUM / BETTER MEDIUM	176-233	169-226	169-204
COMMON / BLF	113-169	113-162	113-162

### MOMBASA SALE 42- 14<sup>TH</sup> & 15<sup>TH</sup> OCTOBER 2019

Good but irregular demand for the 139,720 packages (9,245,224.50 kilos) in the market; 10.68% remained unsold.

CTC QUOTATIONS	BP1 – USC	PF1 – USC	PD – USC	D1 – USC
Best	292 – 520	274 – 322	312 – 342	286 – 380
Good	230 – 388	262 – 314	310 – 358	260 – 333
Good Medium	240 – 360	245 – 282	260 – 338	250 – 290
Medium	160 – 252	200 – 256	200 – 285	190 – 282
Lower Medium	124 – 242	115 – 226	100 – 220	102 – 218
Plainer	100 – 144	097 – 176	100 – 200	098 – 198