

NATIONAL BROKERS LIMITED

<http://nationalbrokersbd.com/>

Tea Auctioneers since 1948

TEA MARKET REPORT – Sale 21 held on Tuesday 1st October, 2019

CTC LEAF: 65,698 packages of Current Season & 280 packages of Old Season Teas on offer once again met with less demand and prices eased further. There were heavier withdrawals.

BROKENS: Good Brokens met with a fairly good enquiry at the beginning but demand slackened thereafter with prices dropping by Tk.5/- to Tk.8/- with fair withdrawals. Medium Brokens met with a similar trend. Plain types were difficult of sale with heavier withdrawals. Poor varieties met with some enquiry but again at lower rates.

FANNINGS: In this section also buyers were less active particularly at the latter half of the sale and prices fell further. There were also quite heavy withdrawals in all varieties particularly for the Plain and poor types.

CTC DUST: 11,780 packages of Current Season & 20 packages of Old Season Teas on offer met with a good

general demand. Clean, well made, best liquoring teas sold at around last levels. Good and Medium teas were barely steady and tending easier in line with quality. Plain and BLF teas met with less demand and also witnessed fair withdrawals. Blenders lent strong support with fair interest from the Loose tea buyers.

COMMENTS: A larger weight of tea was offered this week but owing to lack of competition prices declined further and there were also heavy withdrawals particularly for the plain and poor varieties. However, two major Blenders were the mainstay of the market who absorbed the bulk of offerings.

Dusts were an easier market.

Our catalogue (Sale 21): Avg: Tk 197.25, Sold 63.2% & (Sale 20) Avg: Tk 198.07, sold 70.2%.

Quotations – This Week – (In Taka)

Brokens	This Week	Last Week	Fannings	This week	Last Week	Dust	This week	Last Week
Large	185-195	190-198	Best	200-205	205-210	PD	189-219	195-220
Medium	187-195	194-200	Good	192-197	197-202	RD	110-230	102-273
Small	188-197	195-202	Medium	187-192	192-195	D	130-235	112-238
Plain	140-160	150-170	Plain	140-160	150-170	CD	153-296	159-307
BLF	130-155	130-160 nom	BLF	130-155	130-160 nom	BLF	110-200	102-166

(BLF- Bought Leaf Factory)

Exchange Rates 01 October, 2019 Sterling Pound: Tk.101.3612, dollar: Tk. 83.2217

Top Prices – This Week

Category – CTC	Garden	Grade	Package	Price	Buyer(s)
Brokens	* Amrail	GBOP	20	214/-	Ispahani
Fannings	* Madhupur	PF	10	275/-	Sanowara
Clonal Brokens	Kaiyacherra Dalu	GBOP	20	312/-	AKT/Three Star
Clonal Fannings	Kaiyacherra Dalu	OF	20	298/-	PA/GL
PD/RD (Incl Clone)	Clevedon	RD(C)	10	270/-	Aftab
D (Incl Clone)	* Daragaon	D	20	235/-	AKT/Danish
CD (Incl Clone)	* Phootullah	CD	10	296/-	Prime

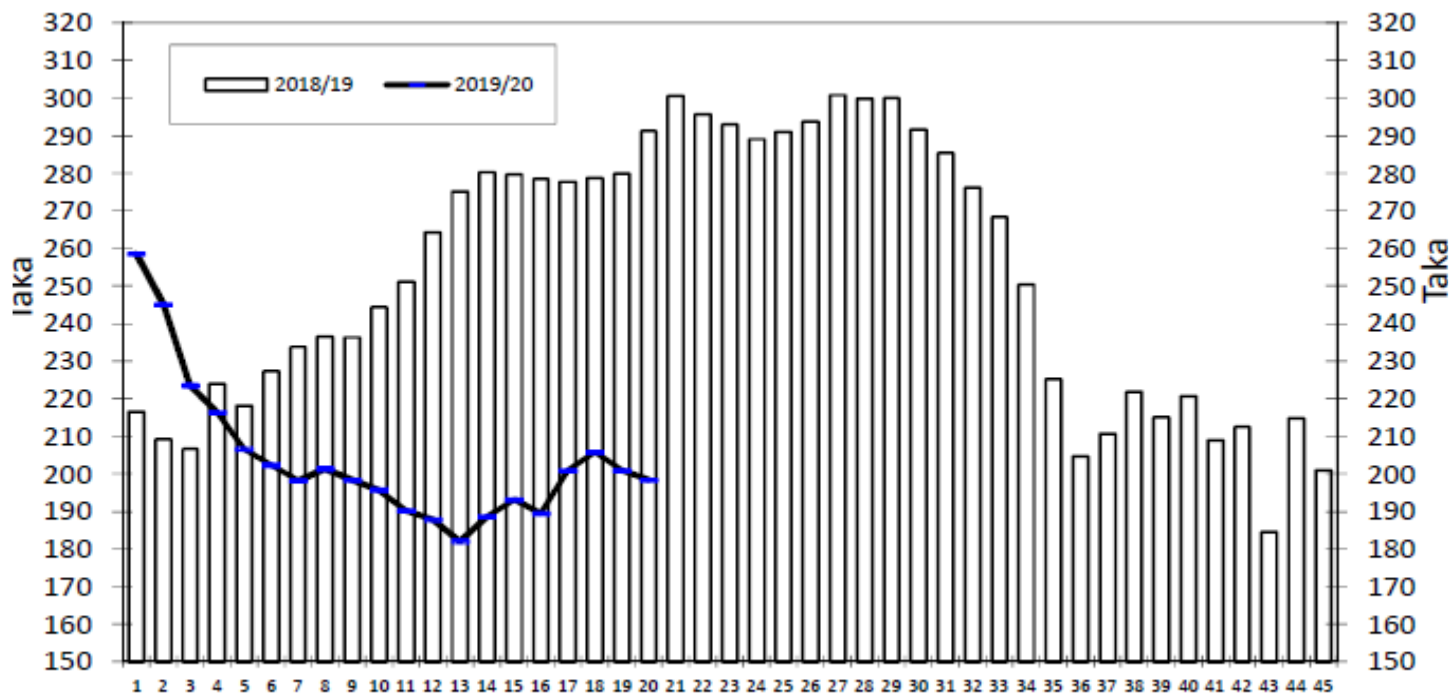
* Above price(s) realised in our catalogue

Offerings

Type	This Sale (Sale 21)				Next Sale (Sale 22)			
	Season 2019-2020		Season 2018-2019		Season 2019-2020		Season 2018-2019	
	Packages	Qty/Kg	Packages	Qty/Kg	Packages	Qty/Kg	Packages	Qty/Kg
Leaf	65,978	3,617,604	36,046	1,975,689	68,006	3,726,729	45,317	2,483,637
Dust	11,800	648,355	7,325	402,719	11,859	649,873	9,797	538,087
Total	77,778	4,265,958	43,371	2,378,407	79,865	4,376,602	55,114	3,021,724

Chittagong Auction Average: Sale 20
Season 2019/20: Tk. 198.37, Season 2018/19: Tk. 291.26

Chittagong Auction Weekly Average



Weekly Sale

Chittagong Auction Statistics - Sale: 20

Quantities of Teas Sold & Average Prices Realised

Category	For the Sale				Up-to-Date Sale							
	Season 2018/19		Season 2019/20		Season 2018/19		Season 2019/20		(+/-) Season 2018/19			
	Qty. (Kg)	Taka	Qty. (Kg)	Taka	Qty. (Kg)	(%)	Taka	Qty. (Kg)	(%)	Taka	Qty. (Kg)	Taka
CTC LEAF	2,234,382.0	291.64	1,541,686.0	197.97	27,450,595.5	80.6%	258.53	31,031,017.5	81.1%	199.10	3,580,422.0	-59.43
CTC DUST	494,362.9	289.56	342,416.3	200.19	6,346,854.0	18.6%	266.02	6,913,460.4	18.1%	207.55	566,606.4	-58.47
Sub-Total	2,728,744.9	291.26	1,884,102.3	198.37	33,797,449.5	99.3%	259.93	37,944,477.9	99.2%	200.64	4,147,028.4	-59.30
ORTHODOX	0.0	0.00	0.0	0.00	499.5	0.0%	553.29	297.5	0.0%	236.77	-202.0	-316.52
Total	2,728,744.9	291.26	1,884,102.3	198.37	33,797,949.0	99.3%	259.94	37,944,775.4	99.2%	200.64	4,146,826.4	-59.30
GREEN TEA	0.0	0.00	0.0	0.00	0.0	0.0%	0.00	3,125.5	0.0%	400.00	3,125.5	400.00
Total	2,728,744.9	291.26	1,884,102.3	198.37	33,797,949.0	99.3%	259.94	37,947,900.9	99.2%	200.65	4,149,951.9	-59.28
Other (s)	3,294.0	245.00	3,292.4	197.50	250,646.9	0.7%	206.37	312,682.8	0.8%	76.07	62,035.9	-130.30
G.Total	2,732,038.9	291.21	1,887,394.7	198.37	34,048,595.9	100%	259.54	38,260,583.7	100%	199.64	4,211,987.8	-59.91

Buyer Purchase Analysis

Buyer	For the Sale				Up-to-Date Sale							
	Season 2018/19		Season 2019/20		Season 2018/19		Season 2019/20		(+/-) Season 2018/19			
	Qty. (Kg)	Taka	Qty. (Kg)	Taka	Qty. (Kg)	(%)	Taka	Qty. (Kg)	(%)	Taka	Qty. (Kg)	Taka
Export	0.0	0.00	0.0	0.00	16,183.5	0%	262.10	8,778.2	0.0%	239.44	-7,405.3	-22.66
Internal	2,732,038.9	291.21	1,887,394.7	198.37	34,032,412.4	100%	259.54	38,251,805.5	100.0%	199.63	4,219,393.1	-59.92
Grand Total	2,732,038.9	291.21	1,887,394.7	198.37	34,048,595.9	100%	259.54	38,260,583.7	100%	199.64	4,211,987.8	-59.91

Crop of Major Tea Producing & Exporting Countries

Country	Month	For the Month			Up-to-Date		
		2018	2019	(+/-) 2018	2018	2019	(+/-) 2018
Bangladesh *	August	12.5	13.5	1.0	42.9	52.6	9.7
Malawi	August	1.7	1.7	0.0	37.1	37.7	0.6
Sri Lanka	August	21.5	26.0	4.5	203.6	210.8	7.2
North India	August	177.8	157.1	-20.7	665.3	684.6	19.3
South India	August	12.3	14.8	2.5	139.1	137.0	-2.1
All India	August	190.1	171.9	-18.2	804.4	821.6	17.2
Kenya	July	35.3	31.5	-3.8	266.3	244.1	-22.2

* Source: Bangladesh Tea Board's Monthly Statistical Bulletin

General + Other Market(s) This/Last Week

KOLKATA SALE 39- 24TH /25TH & 26TH SEPTEMBER, 2019

CTC: There was good general demand. Best Assams sold at levels which were irregular around last. Good and medium Assams followed a similar trend. Better Dooars were irregular around last. Plainer and BLF Dooars were barely steady and tending easier in line with quality. Export accounts were very selective on larger Brokens. Local buyers operated on the Dooars.

Tea Category USC/KG	Brokens	Fannings	Dusts
BEST ASSAMS	325-346	297-318	297-346
GOOD ASSAMS	297-311	269-297	297-325
MED ASSAMS	198-254	212-240	226-254
BEST DOOARS	247-269	240-254	212-226
GOOD- MED DOOARS	198-240	198-226	184-198
PLAINER DOOARS	127-170	127-170	134-170

SILIGURI SALE 39- 25TH SEPTEMBER, 2019

LEAF: Good demand. Select best/good and few better medium sorts were steady to occasionally dearer. The remainder tended irregular and easier.

Quotations (USC/KG)	Brokens(USC/kg)	Fannings(USC/kg)	Dust (USC/kg)
GOOD / BEST	240-311	233-297	205-261
MEDIUM / BETTER MEDIUM	170-233	170-226	163-198
COMMON / BLF	113-163	113-163	113-155

COONOOR SALE 39- 27TH SEPTEMBER 2019

This week there was good demand. Best liquoring teas were dearer; Good sorts were dearer by Rs.2 – 4; Mediums were steady, tending easier upto Rs.2; Plainers were generally firm. All sections of the trade were active except the Exporters who very virtually absent.

CTC	Best	Good	Medium	Plain
Leaf(USC/KG)	164-184	138-158	109-123	90-106

MOMBASA SALE 39 – 23RD & 24TH SEPTEMBER, 2019

There was improved demand for the 136,949 packages (9,063,088.00 kilos) available. Only 10.60% were unsold.

CTC QUOTATIONS	BP1 – USC	PF1 – USC	PD – USC	D1 – USC
Best	220 – 610	286 – 326	310 – 336	270 – 328
Good	250 – 381	270 – 318	310 – 350	262 – 322
Good Medium	247 – 344	240 – 294	272 – 336	220 – 290
Medium	150 – 235	205 – 272	204 – 271	190 – 255
Lower Medium	130 – 230	115 – 224	120 – 228	116 – 224
Plainer	090 – 150	088 – 181	097 – 202	106 – 200